

INDEX	Page
Collateral Pool Information	2-9
Summary Data	2
Distribution by Original Loan Balance	3
Distribution by Original LVR	3
Distribution by Current Loan Balance	4
Distribution by Current LVR	4
Distribution by Seasoning	5
Distribution by Original Loan Term	5
Distribution by Remaining Term	6
Distribution by Interest Rate	7
Distribution by Repayment Types	7
Distribution by Interest Types	7
Distribution by Mortgage Insurer	8
Distribution by Metro/Non-Metro	8
Distribution by Property Location	9
Distribution of Arrears	9
Distribution by Original Occupancy Status	9
Note Information and Waterfall	10



Portfolio Data as of **31-Dec-08**

SUMMARY DATA

Aggregate Principal Balance	170,480,319.97
Number of Loans	472

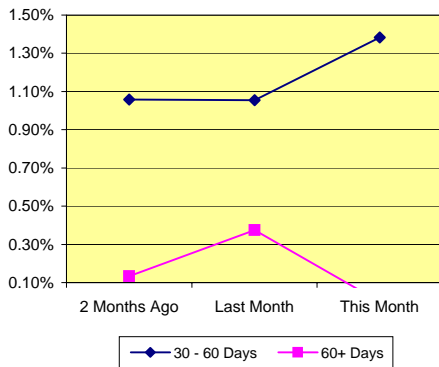
	Range	Average	Median
Principal Balance (A\$)	-15,116.79 - 1,961,265.68	359,803.97	322,193.96
Interest Rate	6.70% - 11.44%	8.85% *	
Remaining Term (Months)	283.59 - 350.04	344.04	344.58
Original Balance (A\$)	13,573.60 - 1,961,265.68	384,474.60	340,000.00
Original Term (Months)	300.00 - 360.00	359.80	360.00
Current LVR	0.00% - 100.37%	77.95% *	
Seasoning (Months)	9.96 - 23.31	15.76	15.42

* Weighted Average

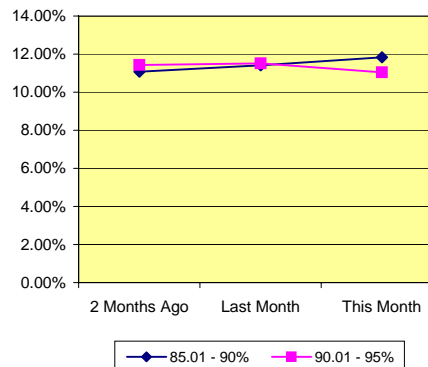
Delinquency Status	Balance (A\$)	Percentage of Pool		
	This Month	2 Months Ago	Last Month	This Month
30 - 60 Days	2,351,794.76	1.06%	1.05%	1.38%
60+ Days	-	0.13%	0.37%	0.00%

High LVR Loans	Balance (A\$)	Percentage of Pool		
	This Month	2 Months Ago	Last Month	This Month
Current LVR				
80.01 - 85%	23,932,984.02	16.35%	16.04%	14.04%
85.01 - 90%	20,180,116.13	11.08%	11.41%	11.84%
90.01 - 95%	18,822,889.97	11.43%	11.52%	11.04%
95.01 - 100%	17,176,014.41	10.40%	10.71%	10.08%

% of Delinquent Loans



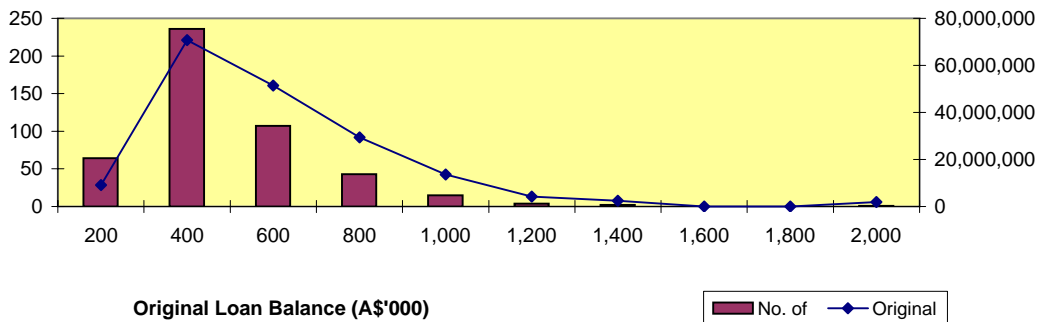
% of High LVR Loans



Distribution by Original Loan Balance

Loan Balance (A\$)	No. of Loans (LM*)	Original Balance (LM)	% (LM)	No. of Loans	Original Balance	%
0.01 - 200,000.00	65	9,288,581.03	4.88%	64	9,108,981.03	4.98%
200,000.01 - 400,000.00	247	74,286,698.99	39.02%	236	70,771,926.74	38.69%
400,000.01 - 600,000.00	110	52,880,092.65	27.78%	107	51,421,006.65	28.11%
600,000.01 - 800,000.00	45	30,777,537.36	16.17%	43	29,401,631.44	16.07%
800,000.01 - 1,000,000.00	16	14,443,649.08	7.59%	15	13,552,724.08	7.41%
1,000,000.01 - 1,200,000.00	4	4,224,339.25	2.22%	4	4,224,339.25	2.31%
1,200,000.01 - 1,400,000.00	2	2,500,181.81	1.31%	2	2,500,181.81	1.37%
1,400,000.01 - 1,600,000.00	-	-	0.00%	-	-	0.00%
1,600,000.01 - 1,800,000.00	-	-	0.00%	-	-	0.00%
1,800,000.01 - 2,000,000.00	1	1,961,265.68	1.03%	1	1,961,265.68	1.07%
	490	190,362,345.85	100.00%	472	182,942,056.68	100.00%

*Last Month

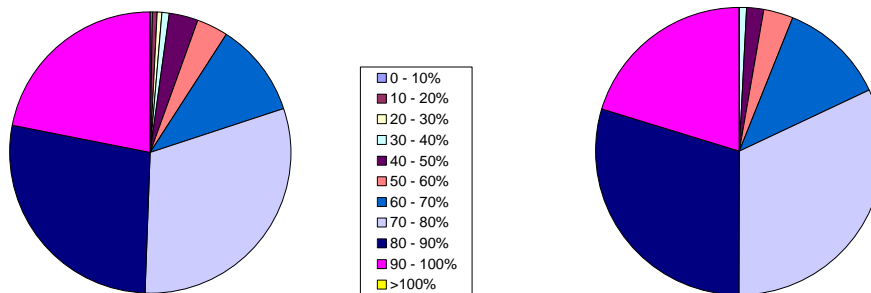


Distribution by Approval LVR

LVR Range:	No. of Loans (LM)	Current Balance (LM)	% (LM)	No. of Loans	Current Balance	%
0.01% - 10.00%	1	2,489.50	0.00%	1	2,489.50	0.00%
10.01% - 20.00%	3	148,041.50	0.08%	3	147,827.97	0.09%
20.01% - 30.00%	2	14,108.58	0.01%	2	11,715.94	0.01%
30.01% - 40.00%	5	1,065,169.50	0.60%	5	1,058,732.81	0.62%
40.01% - 50.00%	15	3,566,755.62	1.99%	15	3,562,451.11	2.09%
50.01% - 60.00%	17	5,383,903.23	3.01%	17	5,400,753.42	3.17%
60.01% - 70.00%	53	21,074,370.99	11.78%	52	20,641,406.14	12.11%
70.01% - 80.00%	149	57,256,878.71	32.01%	143	54,637,711.71	32.05%
80.01% - 90.00%	138	54,110,992.49	30.25%	130	50,626,446.38	29.70%
90.01% - 100.00%	107	36,239,196.13	20.26%	104	34,390,784.99	20.17%
> 100.00%	-	-	0.00%	-	-	0.00%
	490	178,861,906.25	100.00%	472	170,480,319.97	100.00%

Number of Loans

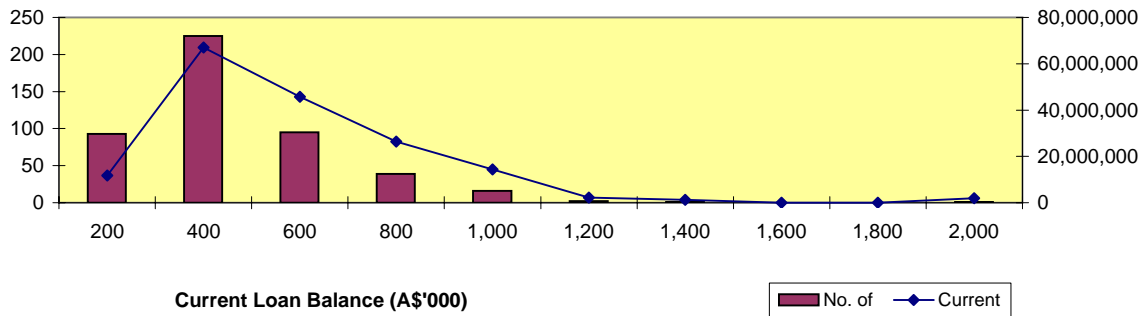
Balance Outstanding





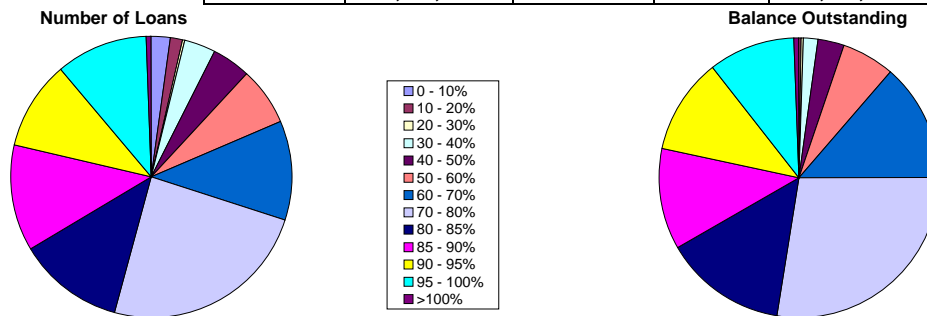
Distribution by Current Loan Balance

Loan Balance (A\$)	No. of Loans (LM)	Current Balance (LM)	% (LM)	No. of Loans	Current Balance	%
- 15,000.00 - 200,000.00	89	11,821,309.26	6.61%	93	11,677,573.38	6.85%
200,000.01 - 400,000.00	242	72,350,372.90	40.45%	225	67,017,363.08	39.31%
400,000.01 - 600,000.00	99	47,862,804.63	26.76%	95	45,702,735.39	26.81%
600,000.01 - 800,000.00	40	27,217,889.04	15.22%	39	26,416,238.39	15.50%
800,000.01 - 1,000,000.00	16	14,267,279.74	7.98%	16	14,324,846.72	8.40%
1,000,000.01 - 1,200,000.00	2	2,173,731.02	1.22%	2	2,173,543.35	1.27%
1,200,000.01 - 1,400,000.00	1	1,206,753.98	0.67%	1	1,206,753.98	0.71%
1,400,000.01 - 1,600,000.00	-	-	0.00%	-	0.00	0.00%
1,600,000.01 - 1,800,000.00	-	-	0.00%	-	0.00	0.00%
1,800,000.01 - 2,000,000.00	1	1,961,765.68	1.10%	1	1,961,265.68	1.15%
	490	178,861,906.25	100.00%	472	170,480,319.97	100.00%



Distribution by Current LVR

LVR Range:	No. of Loans (LM)	Current Balance (LM)	% (LM)	No. of Loans	Current Balance	%
0.01% - 10.00%	6	30,434.38	0.02%	11	115,422.22	0.07%
10.01% - 20.00%	4	222,395.66	0.12%	6	307,611.21	0.18%
20.01% - 30.00%	2	325,225.28	0.18%	2	315,059.40	0.18%
30.01% - 40.00%	19	3,186,083.37	1.78%	17	2,955,200.40	1.73%
40.01% - 50.00%	21	5,050,226.93	2.82%	21	5,070,237.47	2.97%
50.01% - 60.00%	32	11,006,031.47	6.15%	31	10,655,414.04	6.25%
60.01% - 70.00%	57	24,081,981.12	13.46%	54	22,979,322.06	13.48%
70.01% - 80.00%	110	45,675,497.51	25.54%	114	47,153,263.86	27.66%
80.01% - 85.00%	70	28,681,830.12	16.04%	57	23,932,984.02	14.04%
85.01% - 90.00%	59	20,411,631.79	11.41%	58	20,180,116.13	11.84%
90.01% - 95.00%	54	20,604,969.42	11.52%	49	18,822,889.97	11.04%
95.01% - 100.00%	55	19,160,365.05	10.71%	50	17,176,014.41	10.08%
100.00% - 101.00%	1	425,234.15	0.24%	2	816,784.78	0.48%
	490	178,861,906.25	100.00%	472	170,480,319.97	100.00%



Distribution by Seasoning

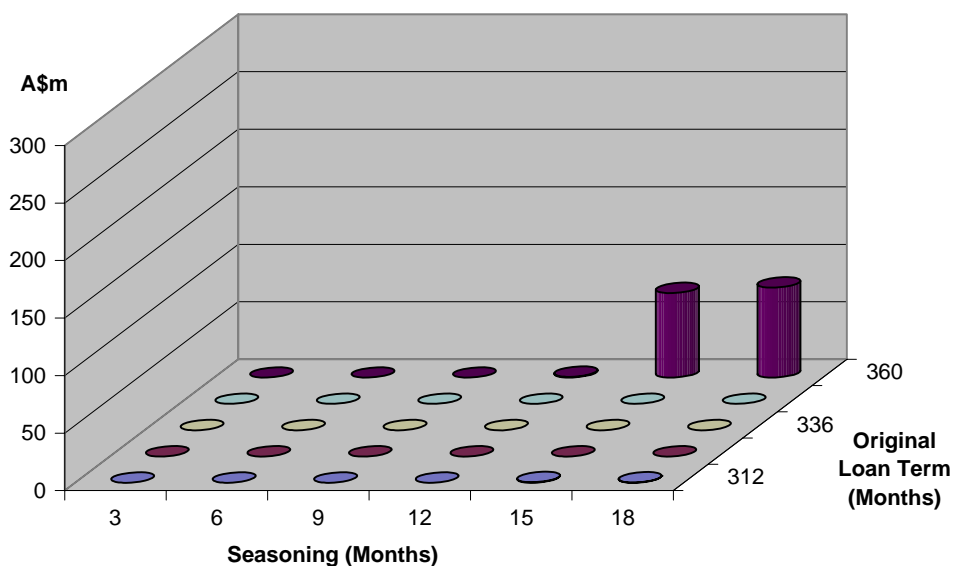
Seasoning (Months)	No. of Loans (LM)	Current Balance (LM)	% (LM)	No. of Loans	Current Balance	%
0 - 3	-	-	0.00%	-	0.00	0.00%
4 - 6	-	-	0.00%	-	0.00	0.00%
7 - 9	1	310,846.38	0.17%	-	0.00	0.00%
10 - 12	1	296,067.00	0.17%	2	606,117.93	0.36%
13 - 15	316	114,653,585.77	64.10%	201	73,997,205.13	43.41%
16 - 18	146	51,449,196.07	28.76%	223	78,714,460.81	46.17%
19 - 21	24	9,981,798.31	5.58%	42	13,643,612.12	8.00%
22 - 24	2	2,170,412.72	1.27%	4	3,518,923.98	2.06%
25 - 27	-	-	0.00%	-	0.00	0.00%
28 - 30	-	-	0.00%	-	0.00	0.00%
	490	178,861,906.25	100.06%	472	170,480,319.97	100.00%

Distribution by Original Loan Term

Original Loan Term (Months)	No. of Loans (LM)	Current Balance (LM)	% (LM)	No. of Loans	Current Balance	%
0 - 303	1	537,039.79	0.30%	-	537,064.79	0.32%
304 - 306	-	-	0.00%	-	-	0.00%
307 - 309	-	-	0.00%	-	-	0.00%
310 - 312	-	-	0.00%	-	-	0.00%
313 - 315	-	-	0.00%	-	-	0.00%
316 - 318	-	-	0.00%	-	-	0.00%
319 - 321	-	-	0.00%	-	-	0.00%
322 - 324	-	-	0.00%	-	-	0.00%
325 - 327	-	-	0.00%	-	-	0.00%
328 - 330	-	-	0.00%	-	-	0.00%
331 - 333	-	-	0.00%	-	-	0.00%
334 - 336	-	-	0.00%	-	-	0.00%
337 - 339	-	-	0.00%	-	-	0.00%
340 - 342	-	-	0.00%	-	-	0.00%
343 - 345	-	-	0.00%	-	-	0.00%
346 - 348	-	-	0.00%	-	-	0.00%
349 - 351	-	-	0.00%	-	-	0.00%
352 - 354	-	-	0.00%	-	-	0.00%
355 - 357	-	-	0.00%	-	-	0.00%
358 - 360	489	178,324,866.46	99.70%	472	169,943,255.18	99.68%
	490	178,861,906.25	100.00%	472	170,480,319.97	100.00%

Distribution by Remaining Term:

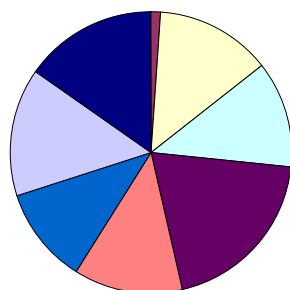
Remaining Term (Months)	No. of Loans (LM)	Current Balance (LM)	% (LM)	No. of Loans	Current Balance	%
0 - 303	1	537,039.79	0.30%	-	537,064.79	0.32%
304 - 306	-	-	0.00%	-	-	0.00%
307 - 309	-	-	0.00%	-	-	0.00%
310 - 312	-	-	0.00%	-	-	0.00%
313 - 315	-	-	0.00%	-	-	0.00%
316 - 318	-	-	0.00%	-	-	0.00%
319 - 321	-	-	0.00%	-	-	0.00%
322 - 324	-	-	0.00%	-	-	0.00%
325 - 327	-	-	0.00%	-	-	0.00%
328 - 330	-	-	0.00%	-	-	0.00%
331 - 333	-	-	0.00%	-	-	0.00%
334 - 336	-	-	0.00%	-	-	0.00%
337 - 339	2	2,170,412.72	1.21%	4	3,518,923.98	2.06%
340 - 342	24	10,323,833.59	5.77%	42	13,944,301.94	8.18%
343 - 345	146	50,956,559.24	28.49%	223	78,263,148.34	45.91%
346 - 348	315	114,173,922.87	63.83%	201	73,466,642.23	43.09%
349 - 351	1	389,291.66	0.22%	2	750,238.69	0.44%
352 - 354	1	310,846.38	0.17%	-	-	0.00%
355 - 357	-	-	0.00%	-	-	0.00%
358 - 360	-	-	0.00%	-	-	0.00%
	490	178,861,906.25	100.00%	472	170,480,319.97	100.00%



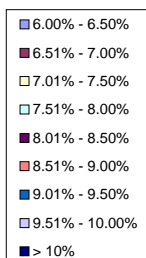
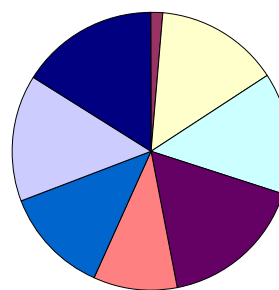
Distribution by Interest Rate

Interest Rate	No. of Loans (LM)	Current Balance (LM)	% (LM)	No. of Loans	Current Balance	%
6.00% - 6.50%	-	-	0.00%	-	-	0.00%
6.51% - 7.00%	7	2,337,575.12	1.31%	7	2,337,022.56	1.37%
7.01% - 7.50%	81	25,180,862.88	14.08%	79	24,635,357.31	14.45%
7.51% - 8.00%	76	25,182,026.51	14.08%	75	24,392,426.22	14.31%
8.01% - 8.50%	122	29,757,112.11	16.64%	118	28,800,041.31	16.89%
8.51% - 9.00%	80	18,455,181.00	10.32%	75	16,435,406.88	9.64%
9.01% - 9.50%	67	22,098,541.75	12.36%	66	21,498,422.66	12.61%
9.51% - 10.00%	94	26,112,713.87	14.60%	90	24,804,983.66	14.55%
> 10%	97	29,737,893.01	16.63%	91	27,576,659.37	16.18%
	624	178,861,906.25	100.00%	601	170,480,319.97	100.00%

Number of Loans



Balance Outstanding

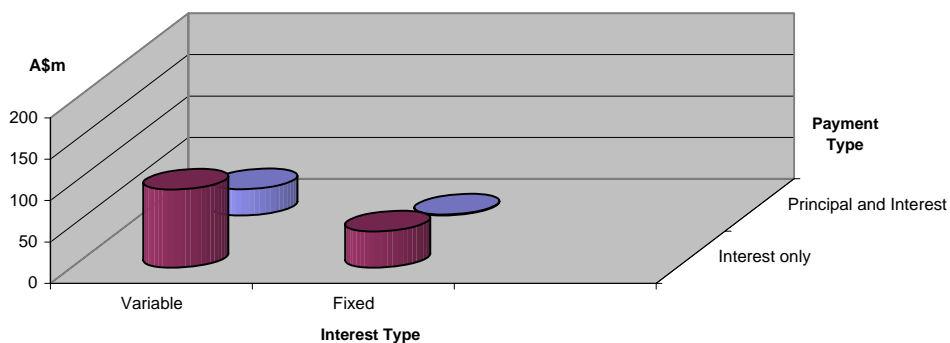


Distribution by Repayment Types:

Repayment Types	No. of Loans (LM)	Current Balance (LM)	% (LM)	No. of Loans	Current Balance	%
Principal and Interest	124	33,290,963.77	18.61%	123	32,402,902.39	19.01%
Interest only	500	145,570,942.48	81.39%	478	138,077,417.58	80.99%
	624	178,861,906.25	100.00%	601	170,480,319.97	100.00%

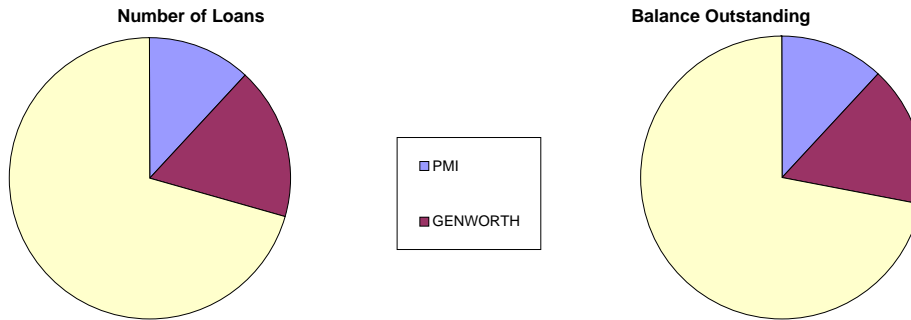
Distribution by Interest Types:

Repayment Types	No. of Loans (LM)	Current Balance (LM)	% (LM)	No. of Loans	Current Balance	%
Variable	484	132,846,860.52	72.26%	464	125,797,055.34	73.79%
Fixed	140	46,015,045.73	25.03%	137	44,683,264.63	26.21%
	643	183,854,689.16	97.28%	601	170,480,319.97	100.00%



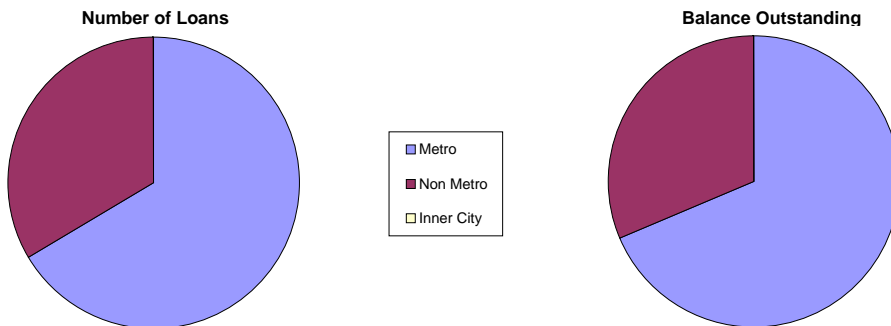
Distribution by Mortgage Insurer

Mortgage Insurer	No. of Loans (LM)	Current Balance (LM)	% (LM)	No. of Loans	Current Balance	%
PMI	60	21,907,866.38	12.25%	57	20,284,340	11.90%
GENWORTH	85	28,463,067.79	15.91%	82	27,396,829	16.07%
MGIC	345	128,490,972.08	71.84%	333	122,799,152	72.03%
	490	178,861,906.25	100.00%	472	170,480,319.97	100.00%



Distribution by Metro/Non-Metro

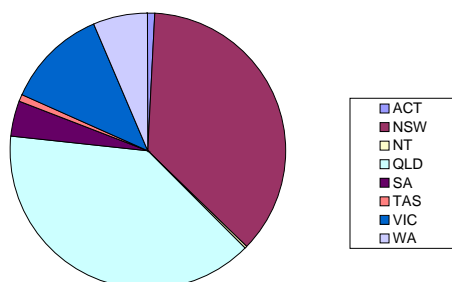
Original Occupancy Status	No. of securities (LM)	Current Balance (LM)	% (LM)	No. of securities	Current Balance	%
Metro	362	122,916,735.06	68.72%	349	117,046,081.38	68.66%
Non Metro	182	55,945,171.19	31.28%	176	53,434,238.59	31.34%
Inner City	-	-	0.00%	-	-	0.00%
	544	178,861,906.25	100.00%	525	170,480,319.97	100.00%



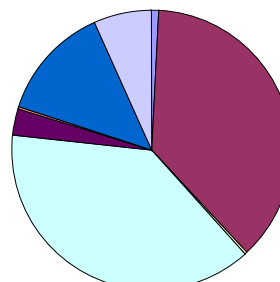
Distribution by Property Location

Property Location	No. of securities (LM)	Current Balance (LM)	% (LM)	No. of securities	Current Balance	%
ACT	5	1,473,387.84	0.82%	5	1,474,440.21	0.86%
NSW	196	65,815,274.44	36.80%	190	63,228,891.99	37.09%
NT	2	575,307.44	0.32%	2	575,372.17	0.34%
QLD	217	69,382,577.41	38.79%	206	65,239,368.68	38.27%
SA	22	5,273,059.16	2.95%	22	5,245,611.15	3.08%
TAS	4	645,923.66	0.36%	4	645,633.72	0.38%
VIC	65	24,031,847.32	13.44%	63	22,794,300.94	13.37%
WA	33	11,664,528.97	6.52%	33	11,276,701.12	6.61%
	544	178,861,906.25	100.00%	525	170,480,319.97	100.00%

Number of Loans



Balance Outstanding



Distribution of Arrears

Days in Arrears	No. of Loans (LM)	Current Balance (LM)	% (LM)	No. of Loans	Current Balance	%
0	591	166,753,053	93.23%	570	158,621,356.09	93.22%
1 - 30	26	9,551,753	5.34%	24	9,177,526.10	5.39%
31 - 60	5	1,886,745	1.05%	6	2,351,794.76	1.38%
61 - 90	2	670,355	0.37%	-	-	0.00%
>90	-	-	0.00%	1	-	0.00%
	624	178,861,906.25	100.00%	601	170,150,676.95	100.00%

Distribution by Product Type

Product Type	No. of Loans (LM)	Current Balance (LM)	% (LM)	No. of Loans	Current Balance	%
Full Documentation	260	87,728,756.05	49.05%	250	83,373,416.94	48.91%
Low Documentation	148	62,859,496.27	35.14%	141	59,691,438.53	35.01%
No Documentation	82	28,273,653.93	15.81%	81	27,415,464.50	16.08%
	490	178,861,906.25	100.00%	472	170,480,319.97	100.00%

Nautilus Trust No. 1 Series 2008-1

January 5, 2009

Monthly Waterfall Calculation Report

Collection Period (start)	December 01, 2008
Collection Period (end)	December 31, 2008
Actual number of days in the Collection Period	31
Payment Period (start)	December 04, 2008
Payment Period (end)	January 05, 2009
Actual number of days in the Payment Period	32
BBSW	4.59830 %

Receivables reconciliation

Outstanding Balance of Receivables as at the start of preceding collection period	178,861,906.25
Add:Fees charges	279,466.51
Add:Interest Charges	1,326,665.64
Add:Redraws and Further Advances paid during the period	900,263.77
Less:Repayments	10,887,982.20
Outstanding Balance of Receivables as at end of preceding collection period	170,480,319.97

A. OUTSTANDING NOTE ANALYSIS

Class A Notes

Number of Outstanding Notes	14,560
Margin for the Notes	2.35000 %
Interest Rate for the Notes	6.94830 %
Interest Accrued (i.e. due on next Payment Date)	729,019.20
Interest to be paid on next Payment Date	729,019.20
Unpaid Interest Carry Forward	0.00

Opening Invested Amount	119,953,579.20
Opening Stated Amount	119,953,579.20
Principal Repayments to be made on next Payment Date	8,234,262.40
Charge Offs to be made on next Payment Date	0.00
Charge Offs to be reimbursed on next Payment Date	0.00
Carry over Charge Offs as of next Payment Date	0.00
Closing Invested Amount	111,719,316.80
Closing Stated Amount	111,719,316.80

Opening Principal Factor	0.82385700
Principal Paid Factor	0.05655400
Interest Paid Factor	0.00500700
Closing Principal Factor	0.76730300

Class B Notes

Number of Outstanding Notes	6,240
Margin for the Notes	3.40000 %
Interest Rate for the Notes	7.99830 %
Interest Accrued (i.e. due on next Payment Date)	433,617.60
Interest to be paid on next Payment Date	433,617.60

Nautilus Trust No. 1 Series 2008-1

January 5, 2009

Unpaid Interest Carry Forward	0.00
Opening Invested Amount	61,986,972.57
Opening Stated Amount	61,986,972.57
Principal Repayments to be made on next Payment Date	149,063.18
Charge Offs to be made on next Payment Date	0.00
Charge Offs to be reimbursed on next Payment Date	0.00
Carry over Charge Offs as of next Payment Date	0.00
Closing Invested Amount	61,837,909.39
Closing Stated Amount	61,837,909.39
Opening Principal Factor	0.99338097
Principal Paid Factor	0.00238883
Interest Paid Factor	0.00694900
Closing Principal Factor	0.99099214
<u>Class T Notes</u>	
Number of Outstanding Notes	0
Margin for the Notes	0.00000 %
Interest Rate for the Notes	4.59830 %
Interest Accrued (i.e. due on next Payment Date)	1,661.09
Interest to be paid on next Payment Date	1,661.09
Unpaid Interest Capitalised	0.00
Opening Amount	413,027.43
Amount Issued During Period	149,063.18
Opening Stated Amount	413,027.43
Principal Repayments to be made on next Payment Date	0.00
Charge Offs to be made on next Payment Date	0.00
Charge Offs to be reimbursed on next Payment Date	0.00
Carry over Charge Offs as of next Payment Date	0.00
Closing Invested Amount	562,090.61
Closing Stated Amount	562,090.61
<u>Liquidity Notes</u>	
Number of Outstanding Notes	0
Margin for the Notes	0.00000 %
Interest Rate for the Notes	4.59830 %
Interest Accrued (i.e. due on next Payment Date)	0.00
Interest to be paid on next Payment Date	0.00
Unpaid Interest Carry Forward	0.00
Opening Invested Amount	0.00
Opening Stated Amount	0.00
Principal Repayments to be made on next Payment Date	0.00
Charge Offs to be made on next Payment Date	0.00
Charge Offs to be reimbursed on next Payment Date	0.00
Carry over Charge Offs as of next Payment Date	0.00
Closing Invested Amount	0.00
Closing Stated Amount	0.00

Nautilus Trust No. 1 Series 2008-1

January 5, 2009

Opening Principal Factor	0.00000000
Principal Paid Factor	0.00000000
Interest Paid Factor	0.00000000
Closing Principal Factor	0.00000000

B. LIQUIDITY RESERVE

Liquidity Reserve Required amount	748,800.00
Opening Balance	748,800.00
Less: Liquidity Reserve Draw towards Total Available Income	0.00
Less: Excess towards Total Available Income	0.00
Reimbursement of Liquidity Reserve Draw previously unreimbursed	0.00
Closing Balance	748,800.00

C. SPREAD RESERVE

Opening Balance	883,000.00
Floor Amount	150,000.00
Spread Reserve Required amount	883,000.00
Required Spread Reserve Draw	0.00
Available Spread Reserve Draw	733,000.00
Less: Actual Spread Reserve Draw towards Total Available Income	0.00
Less: Excess towards Total Available Income	0.00
Reimbursement of Spread Reserve Draw previously unreimbursed	0.00
Top up of Spread Reserve to next periods required reserve balance	0.00
Closing Balance	883,000.00

D. UNREIMBURSED PRINCIPAL DRAW

Opening Balance	999,474.83
Principal Draw from Current Period (Accruals for Collection Period)	734,599.26
Principal Draw from Current Period (Accruals between Determination Date and Payment Date)	206,079.53
Principal Draw from Current Period (Liquidity Shortfall)	0.00
Reimbursement of Principal Draw	999,474.83
Closing Balance	940,678.79

E. MGIC RESERVE

MGIC Reserve Required amount	3,800,000.00
Opening Balance	3,800,000.00
Less: MGIC Reserve Draw towards Total Available Income	0.00
Less: Excess towards repaying Outstanding MGIC Loan	0.00
Closing Balance	3,800,000.00

Nautilus Trust No. 1 Series 2008-1

January 5, 2009

F. AVAILABLE CASH

Collections for Preceding Collection Period	10,887,982.20
Less: Interest Posted during the collection period	1,326,665.64
Less: Borrower Exit Fees in the nature of Income	0.00
Less: Accrual Amount for the Collection Period	734,599.26
Less: Shortfall Adjustment calculated on the preceding Determination Date	0.00
Less: Principal component of Collection Period Distributions	900,263.77
Redraws distributed during the collection period	900,263.77
Principal component of Timely Payment Cover to the Mortgage Insurer	0.00
PRINCIPAL COLLECTIONS	8,381,586.28
Principal Collections	8,381,586.28
Reimbursement of Principal Draw	1,661.09
Reimbursement of Charge offs and Carryover Charge offs	0.00
Less: Principal Draw	940,678.79
PRINCIPAL REPAYMENT FUND	8,440,382.32
Undistributed amount from previous period	101.02
TOTAL AVAILABLE PRINCIPAL FOR DISTRIBUTION	8,440,483.34
Shortfall Adjustment applicable next period	0.00
Required Payments	1,336,874.12
Collections	10,887,982.20
Less: Collection Period Distributions	900,263.77
Redraws distributed during the collection period	900,263.77
Timely Payment Cover to the Mortgage Insurer	0.00
Break Costs paid during collection Period	0.00
Less: Principal Collections	8,381,586.28
Other Income	39,637.74
Net payments to be received under the Derivatives Contracts	0.00
INTEREST COLLECTIONS	1,645,769.89
Interest Collections	1,645,769.89
Principal Draw	940,678.79
Liquidity Reserve Draw	0.00
Excess Liquidity Reserve	0.00
Spread Reserve Draw	0.00
MGIC Reserve Draw	0.00
TOTAL INTEREST COLLECTIONS	2,586,448.68
Undistributed amount from previous period	0.00
TOTAL AVAILABLE INCOME FOR DISTRIBUTION	2,586,448.68

Nautilus Trust No. 1 Series 2008-1

January 5, 2009

G. Distribution of Total Interest Collections - Clause 1.10 of Supplementary Terms Notice

Amount available for Distribution	2,586,448.68
a) \$100 to the Participation Unitholders	100.00
b) Taxes	0.00
c) Fees and expenses to Trustee, Security Trustee, Custodian and Standby-Servicer	6,861.02
d) Other Series Expenses	119.14
e) (i) Fees and expenses to Manager	106,392.38
e) (ii) Fees and expenses to the Servicer	32,881.68
f) (i) Unpaid Interest and Interest for Class A Notes	729,019.20
f) (ii) Unpaid Interest and Interest for Liquidity Notes	0.00
f) (iii) Net payment to the Derivative Counterparty (DC) including Break Cost if the DC is not the Defaulting Party	27,883.10
g) Unpaid Interest and Interest for Class B Notes	433,617.60
h) Reimbursement of outstanding Liquidity Reserve Draw from previous periods	0.00
i) Reimbursement of outstanding Principal Draw and Accrual Amount	999,474.83
j) Reimbursement of liquidation losses and carry-over liquidation losses	0.00
k) Unpaid Interest and Interest for Class T Notes	1,661.09
l) Reimbursement of outstanding Spread Reserve Draw from previous periods	0.00
m) Tax Shortfall	0.00
n) Tax Amount	0.00
o) Break Costs under Derivative Contract where Derivative Counterparty is the Defaulting Party	0.00
p) Amounts (non-principal) due to any other Secured Creditor	0.00
q) All Class T Interest previously capitalised, after Termination Date	0.00
r) (i) 60% of Surplus to Participation Unitholder A	149,063.18
r) (ii) 40% of Surplus to Participation Unitholder B	99,375.45

H. Distribution of Principal Repayment Fund - Clause 1.12 of Supplementary Terms Notice

Amount available for Distribution	8,440,483.34
a) Principal Draw	206,079.53
b) Repayment of Further Advances and Redraws	0.00
c) Principal payment to Liquidity Noteholders	0.00
d) If Pro_Rata test is satisfied, pari passu payments towards reducing Class A, AB and B notes outstanding balance to zero	0.00
e) Principal payment to Class A Noteholders	8,234,262.40
f) Principal payment to Class B Noteholders	0.00
g) Principal payment to Class T Noteholders	0.00
h) Amount upto in aggregate to the subscription proceeds of the residual unit	0.00
i) (i) 50% of Surplus to Participation Unitholder A	0.00
i) (ii) 50% of Surplus to Participation Unitholder B	0.00