



<b>INDEX</b>	<b>Page</b>
<b>Collateral Pool Information</b>	<b>2-9</b>
Summary Data	2
Distribution by Original Loan Balance	3
Distribution by Original LVR	3
Distribution by Current Loan Balance	4
Distribution by Current LVR	4
Distribution by Seasoning	5
Distribution by Original Loan Term	5
Distribution by Remaining Term	6
Distribution by Interest Rate	7
Distribution by Repayment Types	7
Distribution by Interest Types	7
Distribution by Mortgage Insurer	8
Distribution by Metro/Non-Metro	8
Distribution by Property Location	9
Distribution of Arrears	9
Distribution by Original Occupancy Status	9
<b>Note Information and Waterfall</b>	<b>10</b>



Portfolio Data as of **31-Aug-08**

**SUMMARY DATA**

Aggregate Principal Balance	195,668,157.02
Number of Loans	694

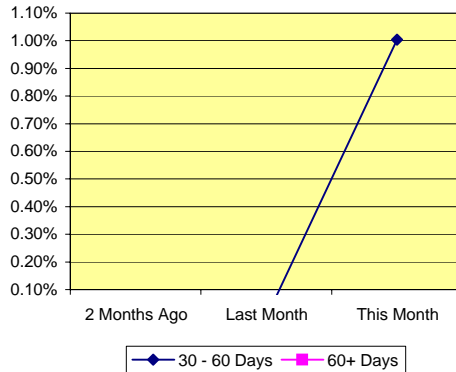
	Range	Average	Median
Principal Balance (A\$)	-16,013.95 - 1,961,765.68	281,942.59	248,571.07
Interest Rate	6.70% - 12.94%	10.06% *	
Remaining Term (Months)	287.61 - 354.05	347.98	348.59
Original Balance (A\$)	13,573.60 - 1,961,265.68	300,340.59	265,994.00
Original Term (Months)	300.00 - 360.00	359.74	360.00
Current LVR	0.00% - 100.00%	78.26% *	
Seasoning (Months)	5.95 - 19.30	11.76	11.41

\* Weighted Average

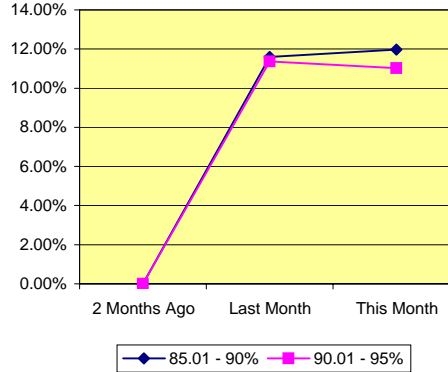
Delinquency Status	Balance (A\$)	Percentage of Pool		
	This Month	2 Months Ago	Last Month	This Month
30 - 60 Days	1,963,769.07	0.00%	0.00%	1.00%
60+ Days	-	0.00%	0.00%	0.00%

High LVR Loans	Balance (A\$)	Percentage of Pool		
	This Month	2 Months Ago	Last Month	This Month
Current LVR				
80.01 - 85%	32,378,623.28	0.00%	15.71%	16.55%
85.01 - 90%	23,440,554.67	0.00%	11.60%	11.98%
90.01 - 95%	21,584,553.09	0.00%	11.36%	11.03%
95.01 - 100%	21,815,488.21	0.00%	10.23%	11.15%

**% of Delinquent Loans**



**% of High LVR Loans**

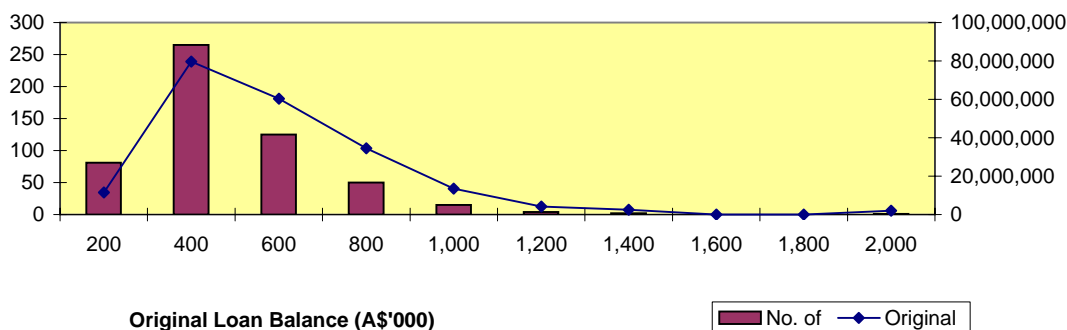




**Distribution by Original Loan Balance**

Loan Balance (A\$)	No. of Loans (LM*)	Original Balance (LM)	% (LM)	No. of Loans	Original Balance	%
0.01 - 200,000.00	90	12,257,471.78	5.60%	81	11,428,651.99	5.49%
200,000.01 - 400,000.00	271	81,575,169.65	37.25%	265	79,683,077.14	38.28%
400,000.01 - 600,000.00	132	63,574,049.35	29.03%	125	60,414,689.45	29.03%
600,000.01 - 800,000.00	52	35,846,291.45	16.37%	50	34,422,480.72	16.54%
800,000.01 - 1,000,000.00	18	15,961,113.37	7.29%	15	13,552,724.08	6.51%
1,000,000.01 - 1,200,000.00	5	5,351,511.48	2.44%	4	4,224,339.25	2.03%
1,200,000.01 - 1,400,000.00	2	2,457,658.18	1.12%	2	2,457,658.18	1.18%
1,400,000.01 - 1,600,000.00	-	-	0.00%	-	-	0.00%
1,600,000.01 - 1,800,000.00	-	-	0.00%	-	-	0.00%
1,800,000.01 - 2,000,000.00	1	1,961,265.68	0.90%	1	1,961,265.68	0.94%
	<b>571</b>	<b>218,984,530.94</b>	<b>100.00%</b>	<b>543</b>	<b>208,144,886.49</b>	<b>100.00%</b>

\*Last Month

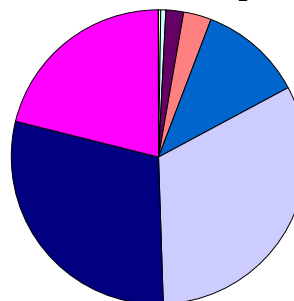
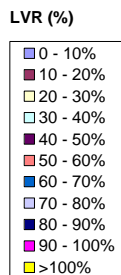
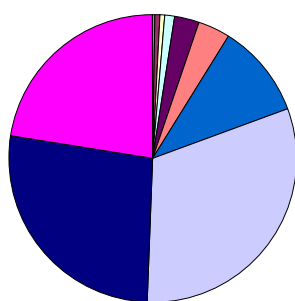


**Distribution by Approval LVR**

LVR Range:	No. of Loans (LM)	Current Balance (LM)	% (LM)	No. of Loans	Current Balance	%
0.01% - 10.00%	-	-	0.00%	1	500.00	0.00%
10.01% - 20.00%	-	-	0.00%	4	227,232.46	0.12%
20.01% - 30.00%	-	-	0.00%	3	108,450.49	0.06%
30.01% - 40.00%	-	-	0.00%	6	1,467,641.30	0.75%
40.01% - 50.00%	-	-	0.00%	15	3,571,746.64	1.83%
50.01% - 60.00%	-	-	0.00%	19	5,788,013.75	2.96%
60.01% - 70.00%	-	-	0.00%	58	22,554,288.89	11.53%
70.01% - 80.00%	-	-	0.00%	169	63,250,800.01	32.33%
80.01% - 90.00%	-	-	0.00%	146	57,499,721.69	29.39%
90.01% - 100.00%	-	-	0.00%	122	41,199,761.79	21.06%
> 100.00%	-	-	0.00%	-	-	0.00%
	-	-	<b>0.00%</b>	<b>543</b>	<b>195,668,157.02</b>	<b>100.00%</b>

Number of Loans

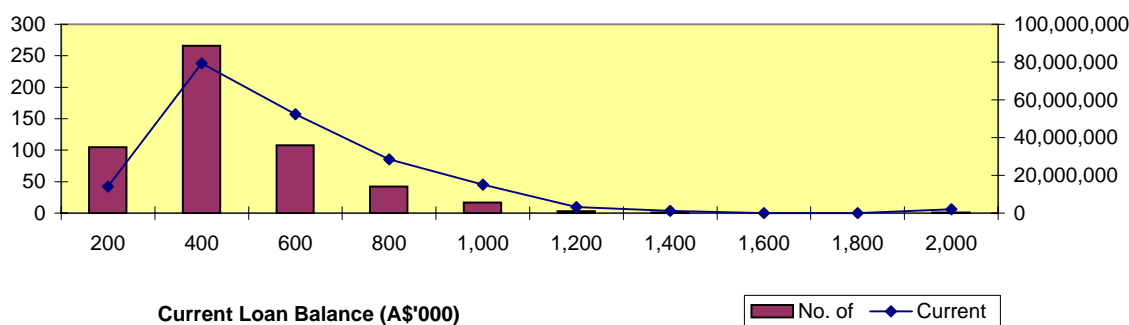
Balance Outstanding





**Distribution by Current Loan Balance**

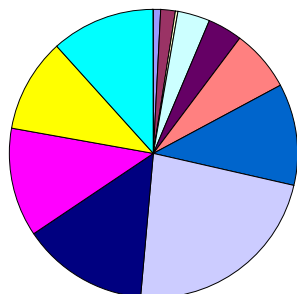
Loan Balance (A\$)	No. of Loans (LM)	Current Balance (LM)	% (LM)	No. of Loans	Current Balance	%
0.01 - 200,000.00	108	13,961,679.97	6.76%	105	14,121,276.62	7.22%
200,000.01 - 400,000.00	275	81,405,912.38	39.39%	266	79,405,550.06	40.58%
400,000.01 - 600,000.00	117	56,280,204.26	27.23%	108	52,339,493.31	26.75%
600,000.01 - 800,000.00	48	32,719,979.44	15.83%	42	28,445,231.07	14.54%
800,000.01 - 1,000,000.00	18	15,931,904.24	7.71%	17	15,003,588.55	7.67%
1,000,000.01 - 1,200,000.00	3	3,184,727.39	1.54%	3	3,184,497.75	1.63%
1,200,000.01 - 1,400,000.00	1	1,206,753.98	0.58%	1	1,206,753.98	0.62%
1,400,000.01 - 1,600,000.00	-	-	0.00%	-	-	0.00%
1,600,000.01 - 1,800,000.00	-	-	0.00%	-	-	0.00%
1,800,000.01 - 2,000,000.00	1	1,961,765.68	0.95%	1	1,961,765.68	1.00%
	<b>571</b>	<b>206,652,927.34</b>	<b>100.00%</b>	<b>543</b>	<b>195,668,157.02</b>	<b>100.00%</b>



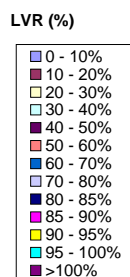
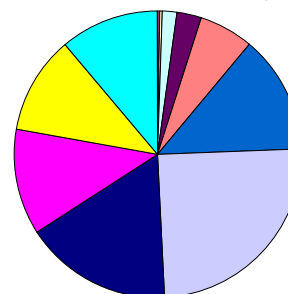
**Distribution by Current LVR**

LVR Range:	No. of Loans (LM)	Current Balance (LM)	% (LM)	No. of Loans	Current Balance	%
0.01% - 10.00%	4	55,680.72	0.03%	5	27,150.76	0.01%
10.01% - 20.00%	13	858,133.82	0.42%	9	569,780.41	0.29%
20.01% - 30.00%	2	390,481.06	0.19%	1	246,148.95	0.13%
30.01% - 40.00%	22	4,128,893.83	2.00%	20	3,719,732.18	1.90%
40.01% - 50.00%	23	6,141,404.35	2.97%	21	5,173,885.65	2.64%
50.01% - 60.00%	38	12,516,033.37	6.06%	38	12,079,666.65	6.17%
60.01% - 70.00%	63	27,104,446.89	13.12%	62	26,028,445.41	13.30%
70.01% - 80.00%	137	54,420,529.37	26.33%	123	48,604,127.76	24.84%
80.01% - 85.00%	78	32,462,311.69	15.71%	77	32,378,623.28	16.55%
85.01% - 90.00%	68	23,972,277.69	11.60%	66	23,440,554.67	11.98%
90.01% - 95.00%	63	23,466,399.29	11.36%	58	21,584,553.09	11.03%
95.01% - 100.00%	60	21,136,235.26	10.23%	63	21,815,488.21	11.15%
> 100.00%	-	-	0.00%	-	-	0.00%
	<b>571</b>	<b>206,652,827.34</b>	<b>100.00%</b>	<b>543</b>	<b>195,668,157.02</b>	<b>100.00%</b>

Number of Loans



Balance Outstanding



**Distribution by Seasoning**

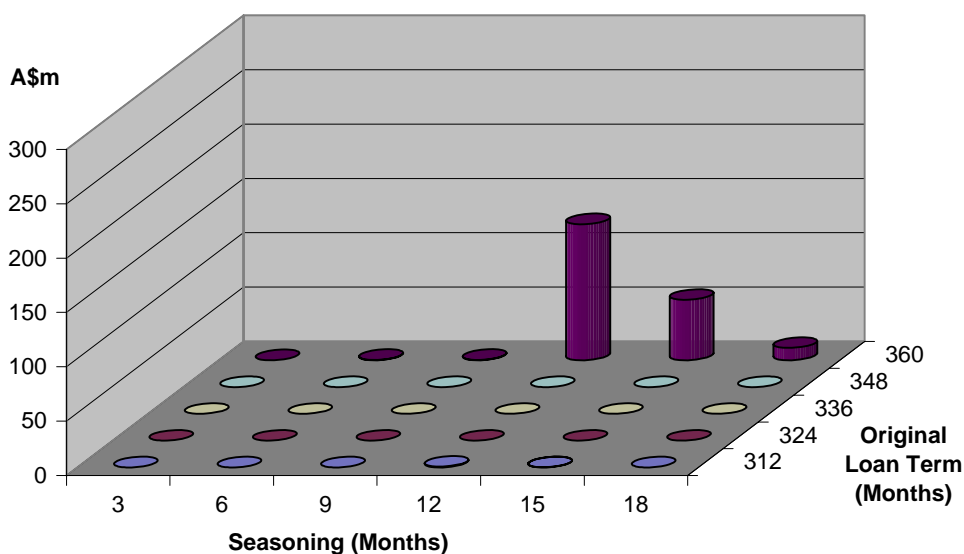
Seasoning (Months)	No. of Loans (LM)	Current Balance (LM)	% (LM)	No. of Loans	Current Balance	%
0 - 3	-	-	0.00%	-	-	0.00%
4 - 6	1	296,067.00	0.14%	-	-	0.00%
7 - 9	241	87,711,090.26	42.44%	5	1,864,068.64	0.95%
10 - 12	264	95,432,584.06	46.18%	407	147,377,392.70	75.32%
13 - 15	59	18,949,843.84	9.17%	109	35,174,439.11	17.98%
16 - 18	6	4,263,242.18	2.06%	21	11,043,609.53	5.64%
19 - 21	-	-	0.00%	1	208,647.04	0.11%
22 - 24	-	-	0.00%	-	-	0.00%
25 - 27	-	-	0.00%	-	-	0.00%
28 - 30	-	-	0.00%	-	-	0.00%
	<b>571</b>	<b>206,652,827.34</b>	<b>100.00%</b>	<b>543</b>	<b>195,668,157.02</b>	<b>100.00%</b>

**Distribution by Original Loan Term**

Original Loan Term (Months)	No. of Loans (LM)	Current Balance (LM)	% (LM)	No. of Loans	Current Balance	%
0 - 303	2	554,576.12	0.27%	2	559,730.32	0.29%
304 - 306	-	-	0.00%	-	-	0.00%
307 - 309	-	-	0.00%	-	-	0.00%
310 - 312	-	-	0.00%	-	-	0.00%
313 - 315	-	-	0.00%	-	-	0.00%
316 - 318	-	-	0.00%	-	-	0.00%
319 - 321	-	-	0.00%	-	-	0.00%
322 - 324	-	-	0.00%	-	-	0.00%
325 - 327	-	-	0.00%	-	-	0.00%
328 - 330	-	-	0.00%	-	-	0.00%
331 - 333	-	-	0.00%	-	-	0.00%
334 - 336	-	-	0.00%	-	-	0.00%
337 - 339	-	-	0.00%	-	-	0.00%
340 - 342	-	-	0.00%	-	-	0.00%
343 - 345	-	-	0.00%	-	-	0.00%
346 - 348	-	-	0.00%	-	-	0.00%
349 - 351	-	-	0.00%	-	-	0.00%
352 - 354	-	-	0.00%	-	-	0.00%
355 - 357	-	-	0.00%	-	-	0.00%
358 - 360	569	206,098,251.22	99.73%	541	195,108,426.70	99.71%
	<b>571</b>	<b>206,652,827.34</b>	<b>100.00%</b>	<b>543</b>	<b>195,668,157.02</b>	<b>100.00%</b>

## Distribution by Remaining Term:

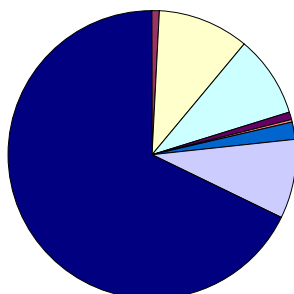
Remaining Term (Months)	No. of Loans (LM)	Current Balance (LM)	% (LM)	No. of Loans	Current Balance	%
0 - 303	2	554,576.12	0.27%	2	559,730.32	0.29%
304 - 306	-	-	0.00%	-	-	0.00%
307 - 309	-	-	0.00%	-	-	0.00%
310 - 312	-	-	0.00%	-	-	0.00%
313 - 315	-	-	0.00%	-	-	0.00%
316 - 318	-	-	0.00%	-	-	0.00%
319 - 321	-	-	0.00%	-	-	0.00%
322 - 324	-	-	0.00%	-	-	0.00%
325 - 327	-	-	0.00%	-	-	0.00%
328 - 330	-	-	0.00%	-	-	0.00%
331 - 333	-	-	0.00%	-	-	0.00%
334 - 336	-	-	0.00%	-	-	0.00%
337 - 339	-	-	0.00%	-	-	0.00%
340 - 342	-	-	0.00%	2	2,170,412.72	1.11%
343 - 345	9	5,590,091.24	2.71%	39	13,552,127.23	6.93%
346 - 348	71	22,179,026.87	10.73%	206	72,628,562.77	37.12%
349 - 351	359	129,398,737.56	62.62%	293	106,461,256.98	54.41%
352 - 354	129	48,634,328.55	23.53%	1	296,067.00	0.15%
355 - 357	1	296,067.00	0.14%	-	-	0.00%
358 - 360	-	-	0.00%	-	-	0.00%
	<b>571</b>	<b>206,652,827.34</b>	<b>100.00%</b>	<b>543</b>	<b>195,668,157.02</b>	<b>100.00%</b>



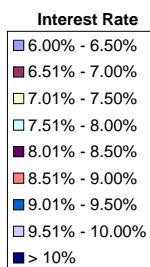
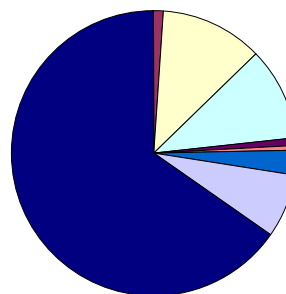
**Distribution by Interest Rate**

Interest Rate	No. of Loans (LM)	Current Balance (LM)	% (LM)	No. of Loans	Current Balance	%
6.00% - 6.50%	-	-	0.00%	-	-	0.00%
6.51% - 7.00%	6	2,010,114.27	0.97%	6	2,008,569.55	1.03%
7.01% - 7.50%	73	23,250,440.57	11.25%	72	22,821,655.30	11.66%
7.51% - 8.00%	62	20,935,860.62	10.13%	62	20,941,459.84	10.70%
8.01% - 8.50%	6	1,425,516.77	0.69%	6	1,425,566.77	0.73%
8.51% - 9.00%	2	1,342,952.36	0.65%	2	1,342,055.47	0.69%
9.01% - 9.50%	15	5,484,879.53	2.65%	15	5,483,211.60	2.80%
9.51% - 10.00%	63	14,966,837.14	7.24%	60	13,958,887.87	7.13%
> 10%	511	137,236,226.08	66.41%	472	127,686,750.62	65.26%
	<b>738</b>	<b>206,652,827.34</b>	<b>100.00%</b>	<b>695</b>	<b>195,668,157.02</b>	<b>100.00%</b>

Number of Loans



Balance Outstanding

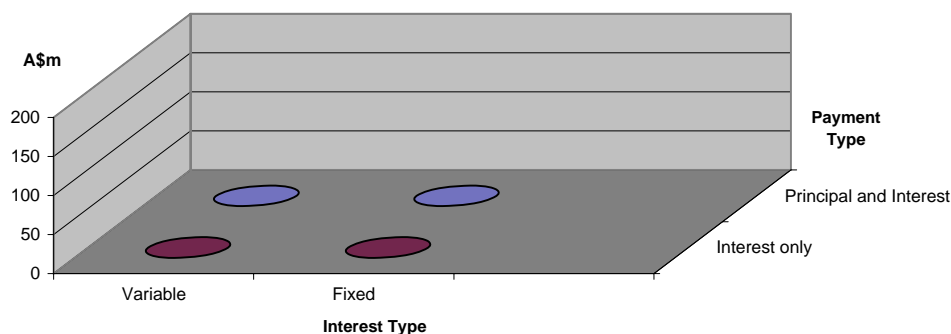


**Distribution by Repayment Types:**

Repayment Types	No. of Loans (LM)	Current Balance (LM)	% (LM)	No. of Loans	Current Balance	%
Principal and Interest	151	39,984,159.44	19.35%	139	37,117,958.08	18.97%
Interest only	587	166,668,667.90	80.65%	556	158,550,198.94	81.03%
	<b>738</b>	<b>206,652,827.34</b>	<b>100.00%</b>	<b>695</b>	<b>195,668,157.02</b>	<b>100.00%</b>

**Distribution by Interest Types:**

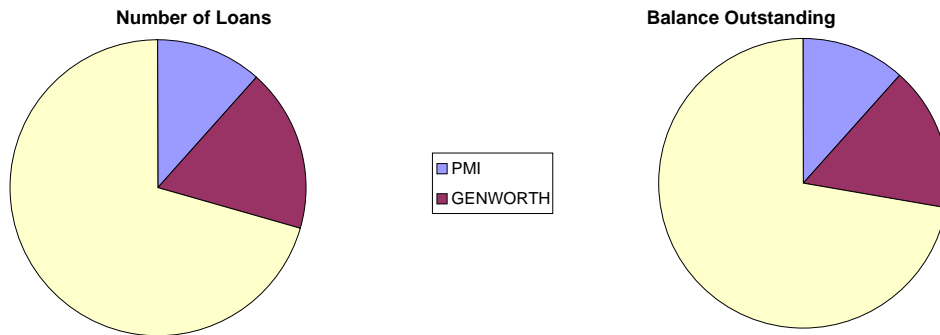
Repayment Types	No. of Loans (LM)	Current Balance (LM)	% (LM)	No. of Loans	Current Balance	%
Variable	593	158,869,800.12	76.88%	551	148,308,277.40	75.80%
Fixed	145	47,783,027.22	23.12%	144	47,359,879.62	24.20%
	<b>738</b>	<b>206,652,827.34</b>	<b>100.00%</b>	<b>695</b>	<b>195,668,157.02</b>	<b>100.00%</b>





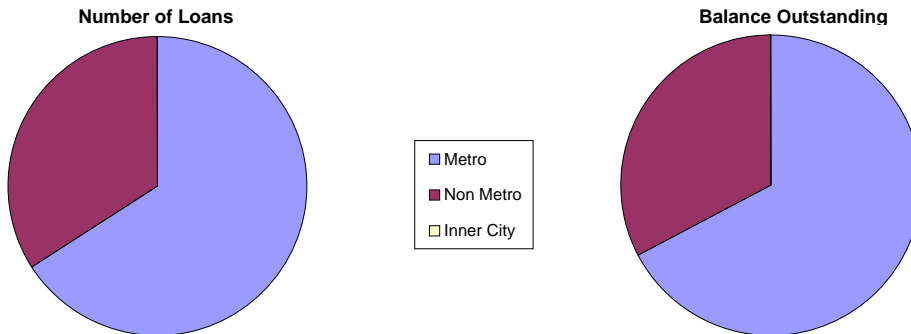
**Distribution by Mortgage Insurer**

Mortgage Insurer	No. of Loans (LM)	Current Balance (LM)	% (LM)	No. of Loans	Current Balance	%
PMI	66	23,215,565.60	11.23%	64	22,714,312	11.61%
GENWORTH	104	34,589,300.84	16.74%	96	31,752,940	16.23%
MGIC	401	148,847,960.90	72.03%	383	141,200,905	72.16%
	<b>571</b>	<b>206,652,827.34</b>	<b>100.00%</b>	<b>543</b>	<b>195,668,157.02</b>	<b>100.00%</b>



**Distribution by Metro/Non-Metro**

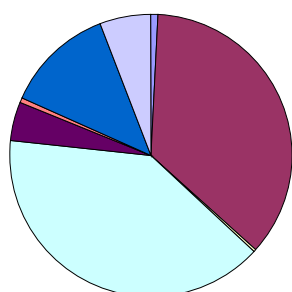
Original Occupancy Status	No. of securities (LM)	Current Balance (LM)	% (LM)	No. of securities	Current Balance	%
Metro	405	139,373,253.63	67.44%	391	131,642,002.58	67.28%
Non Metro	225	67,279,573.71	32.56%	202	64,026,154.44	32.72%
Inner City	-	-	0.00%	-	-	0.00%
	<b>630</b>	<b>206,652,827.34</b>	<b>100.00%</b>	<b>593</b>	<b>195,668,157.02</b>	<b>100.00%</b>



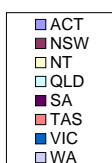
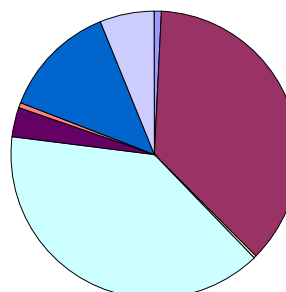
### Distribution by Property Location

Property Location	No. of securities (LM)	Current Balance (LM)	% (LM)	No. of securities	Current Balance	%
ACT	5	1,465,047.52	0.71%	5	1,478,100.72	0.76%
NSW	218	74,003,259.62	35.81%	212	71,663,244.88	36.62%
NT	3	840,337.63	0.41%	2	575,585.38	0.29%
QLD	245	80,563,166.76	38.98%	236	77,086,909.59	39.40%
SA	27	6,824,862.20	3.30%	26	6,416,389.08	3.28%
TAS	6	797,967.21	0.39%	3	706,435.16	0.36%
VIC	84	28,358,667.20	13.72%	74	25,632,675.27	13.10%
WA	42	13,799,519.20	6.68%	35	12,108,816.94	6.19%
	<b>630</b>	<b>206,652,827.34</b>	<b>100.00%</b>	<b>593</b>	<b>195,668,157.02</b>	<b>100.00%</b>

Number of Loans



Balance Outstanding



### Distribution of Arrears

Days in Arrears	No. of Loans (LM)	Current Balance (LM)	% (LM)	No. of Loans	Current Balance	%
	0	-	-	0.00%	664	184,602,043.61
1 - 30	-	-	0.00%	26	9,102,344.34	4.65%
31 - 60	-	-	0.00%	5	1,963,769.07	1.00%
61 - 90	-	-	0.00%	-	-	0.00%
>90	-	-	0.00%	-	-	0.00%
	-	-	<b>0.00%</b>	<b>695</b>	<b>195,668,157.02</b>	<b>100.00%</b>

### Distribution by Product Type

Product Type	No. of Loans (LM)	Current Balance (LM)	% (LM)	No. of Loans	Current Balance	%
Full Documentation	288	97,563,188.86	47.21%	278	94,347,782.67	48.22%
Low Documentation	175	72,603,095.30	35.13%	164	68,198,815.01	34.85%
No Documentation	108	36,486,543.18	17.66%	101	33,121,559.34	16.93%
	<b>571</b>	<b>206,652,827.34</b>	<b>100.00%</b>	<b>543</b>	<b>195,668,157.02</b>	<b>100.00%</b>

## Nautilus Trust No. 1 Series 2008-1

September 4, 2008

## Monthly Waterfall Calculation Report

Collection Period (start)	July 21, 2008
Collection Period (end)	August 31, 2008
Actual number of days in the Collection Period	42
Payment Period (start)	July 21, 2008
Payment Period (end)	September 04, 2008
Actual number of days in the Payment Period	45
BBSW	7.58160 %

## Receivables reconciliation

Outstanding Balance of Receivables as at the start of preceding collection period	206,470,622.65
Add:Fees charges	282,281.77
Add:Interest Charges	2,286,210.03
Add: Redraws and Further Advances paid during the period	2,447,241.15
Less: Repayments	15,818,798.58
Outstanding Balance of Receivables as at end of preceding collection period	195,668,157.02

## A. OUTSTANDING NOTE ANALYSIS

Class A Notes

Number of Outstanding Notes	14,560
Margin for the Notes	2.35000 %
Interest Rate for the Notes	9.93160 %
Interest Accrued (i.e. due on next Payment Date)	1,777,921.60
Interest to be paid on next Payment Date	1,777,921.60
Unpaid Interest Carry Forward	0.00

Opening Invested Amount	145,600,000.00
Opening Stated Amount	145,600,000.00
Principal Repayments to be made on next Payment Date	9,452,352.00
Charge Offs to be made on next Payment Date	0.00
Charge Offs to be reimbursed on next Payment Date	0.00
Carry over Charge Offs as of next Payment Date	0.00
Closing Invested Amount	136,147,648.00
Closing Stated Amount	136,147,648.00

Opening Principal Factor	1.00000000
Principal Paid Factor	0.06492000
Interest Paid Factor	0.01221100
Closing Principal Factor	0.93508000

Class B Notes

Number of Outstanding Notes	6,240
Margin for the Notes	3.40000 %
Interest Rate for the Notes	10.98160 %
Interest Accrued (i.e. due on next Payment Date)	842,524.80
Interest to be paid on next Payment Date	842,524.80

### Nautilus Trust No. 1 Series 2008-1

September 4, 2008

Unpaid Interest Carry Forward	0.00
Opening Invested Amount	62,400,000.00
Opening Stated Amount	62,400,000.00
Principal Repayments to be made on next Payment Date	113,933.51
Charge Offs to be made on next Payment Date	0.00
Charge Offs to be reimbursed on next Payment Date	0.00
Carry over Charge Offs as of next Payment Date	0.00
Closing Invested Amount	62,286,066.49
Closing Stated Amount	62,286,066.49
Opening Principal Factor	1.00000000
Principal Paid Factor	0.00182586
Interest Paid Factor	0.01350200
Closing Principal Factor	0.99817414
<u>Class T Notes</u>	
Number of Outstanding Notes	0
Margin for the Notes	0.00000 %
Interest Rate for the Notes	7.58160 %
Interest Accrued (i.e. due on next Payment Date)	0.00
Interest to be paid on next Payment Date	0.00
Unpaid Interest Capitalised	0.00
Opening Invested Amount	113,933.51
Opening Stated Amount	0.00
Principal Repayments to be made on next Payment Date	0.00
Charge Offs to be made on next Payment Date	0.00
Charge Offs to be reimbursed on next Payment Date	0.00
Carry over Charge Offs as of next Payment Date	0.00
Closing Invested Amount	113,933.51
Closing Stated Amount	113,933.51
<u>Liquidity Notes</u>	
Number of Outstanding Notes	0
Margin for the Notes	0.00000 %
Interest Rate for the Notes	7.58160 %
Interest Accrued (i.e. due on next Payment Date)	0.00
Interest to be paid on next Payment Date	0.00
Unpaid Interest Carry Forward	0.00
Opening Invested Amount	0.00
Opening Stated Amount	0.00
Principal Repayments to be made on next Payment Date	0.00
Charge Offs to be made on next Payment Date	0.00
Charge Offs to be reimbursed on next Payment Date	0.00
Carry over Charge Offs as of next Payment Date	0.00
Closing Invested Amount	0.00
Closing Stated Amount	0.00

## Nautilus Trust No. 1 Series 2008-1

September 4, 2008

Opening Principal Factor	0.00000000
Principal Paid Factor	0.00000000
Interest Paid Factor	0.00000000
Closing Principal Factor	0.00000000

## B. LIQUIDITY RESERVE

Liquidity Reserve Required amount	748,800.00
Opening Balance	748,800.00
Less: Liquidity Reserve Draw towards Total Available Income	0.00
Less: Excess towards Total Available Income	0.00
Reimbursement of Liquidity Reserve Draw previously unreimbursed	0.00
Closing Balance	748,800.00

## C. SPREAD RESERVE

Opening Balance	883,000.00
Floor Amount	150,000.00
Spread Reserve Required amount	883,000.00
Required Spread Reserve Draw	0.00
Available Spread Reserve Draw	733,000.00
Less: Actual Spread Reserve Draw towards Total Available Income	0.00
Less: Excess towards Total Available Income	0.00
Reimbursement of Spread Reserve Draw previously unreimbursed	0.00
Top_up of Spread Reserve to next periods required reserve balance	0.00
Closing Balance	883,000.00

## D. UNREIMBURSED PRINCIPAL DRAW

Opening Balance	0.00
Principal Draw from Current Period (Accruals for Collection Period)	963,661.06
Principal Draw from Current Period (Accruals between Determination Date and Payment Date)	215,045.48
Principal Draw from Current Period (Liquidity Shortfall)	0.00
Reimbursement of Principal Draw	0.00
Closing Balance	1,178,706.54

## E. MGIC RESERVE

MGIC Reserve Required amount	3,800,000.00
Opening Balance	3,800,000.00
Less: MGIC Reserve Draw towards Total Available Income	0.00
Less: Excess towards repaying Outstanding MGIC Loan	0.00
Closing Balance	3,800,000.00

**Nautilus Trust No. 1 Series 2008-1**

**September 4, 2008**

**F. AVAILABLE CASH**

Collections for Preceding Collection Period	15,818,798.58
Less: Interest Posted during the collection period	2,525,391.70
Less: Borrower Exit Fees in the nature of Income	0.00
Less: Accrual Amount for the Collection Period	963,661.06
Less: Shortfall Adjustment calculated on the preceding Determination Date	0.00
Less: Principal component of Collection Period Distributions	2,447,241.15
Redraws distributed during the collection period	2,447,241.15
Principal component of Timely Payment Cover to the Mortgage Insurer	0.00
<b>PRINCIPAL COLLECTIONS</b>	<b>10,846,165.73</b>
Principal Collections	10,846,165.73
Reimbursement of Principal Draw	0.00
Reimbursement of Charge offs and Carryover Charge offs	0.00
<b>PRINCIPAL REPAYMENT FUND</b>	<b>9,667,459.19</b>
Undistributed amount from previous period	0.00
<b>TOTAL AVAILABLE PRINCIPAL FOR DISTRIBUTION</b>	<b>9,667,459.19</b>
Shortfall Adjustment applicable next period	0.00
Required Payments	2,703,752.70
Collections	15,818,798.58
Less: Collection Period Distributions	2,447,241.15
Redraws distributed during the collection period	2,447,241.15
Timely Payment Cover to the Mortgage Insurer	0.00
Break Costs paid during collection Period	0.00
Less: Principal Collections	10,846,165.73
Less: Accrued Interest paid to Warehouse	891,406.50
Other Income	50,564.86
Net payments to be received under the Derivatives Contracts	30,385.29
<b>INTEREST COLLECTIONS</b>	<b>1,714,935.35</b>
Interest Collections	1,714,935.35
Principal Draw	1,178,706.54
Liquidity Reserve Draw	0.00
Excess Liquidity Reserve	0.00
Spread Reserve Draw	0.00
MGIC Reserve Draw	0.00
<b>TOTAL INTEREST COLLECTIONS</b>	<b>2,893,641.89</b>
Undistributed amount from previous period	0.00
<b>TOTAL AVAILABLE INCOME FOR DISTRIBUTION</b>	<b>2,893,641.89</b>

## Nautilus Trust No. 1 Series 2008-1

September 4, 2008

### G. Distribution of Total Interest Collections - Clause 1.10 of Supplementary Terms Notice

Amount available for Distribution	2,893,641.89
a) \$100 to the Participation Unitholders	100.00
b) Taxes	0.00
c) Fees and expenses to Trustee, Security Trustee, Custodian and Standby-Servicer	10,673.07
d) Other Series Expenses	41.91
e) (i) Fees and expenses to Manager	19,419.69
e) (ii) Fees and expenses to the Servicer	53,071.63
f) (i) Unpaid Interest and Interest for Class A Notes	1,777,921.60
f) (ii) Unpaid Interest and Interest for Liquidity Notes	0.00
f) (iii) Net payment to the Derivative Counterparty (DC) including Break Cost if the DC is not the Defaulting Party	0.00
g) Unpaid Interest and Interest for Class B Notes	842,524.80
h) Reimbursement of outstanding Liquidity Reserve Draw from previous periods	0.00
i) Reimbursement of outstanding Principal Draw and Accrual Amount	0.00
j) Reimbursement of liquidation losses and carry-over liquidation losses	0.00
k) Unpaid Interest and Interest for Class T Notes	0.00
l) Reimbursement of outstanding Spread Reserve Draw from previous periods	0.00
m) Tax Shortfall	0.00
n) Tax Amount	0.00
o) Break Costs under Derivative Contract where Derivative Counterparty is the Defaulting Party	0.00
p) Amounts (non-principal) due to any other Secured Creditor	0.00
q) All Class T Interest previously capitalised, after Termination Date	0.00
r) (i) 60% of Surplus to Participation Unitholder A	113,933.51
r) (ii) 40% of Surplus to Participation Unitholder B	75,955.67

### H. Distribution of Principal Repayment Fund - Clause 1.12 of Supplementary Terms Notice

Amount available for Distribution	9,667,459.19
a) Principal Draw	215,045.48
b) Repayment of Further Advances and Redraws	0.00
c) Principal payment to Liquidity Noteholders	0.00
d) If Pro_Rata test is satisfied, pari passu payments towards reducing Class A, AB and B notes outstanding balance to zero	0.00
e) Principal payment to Class A Noteholders	9,452,352.00
f) Principal payment to Class B Noteholders	0.00
g) Principal payment to Class T Noteholders	0.00
h) Amount upto in aggregate to the subscription proceeds of the residual unit	0.00
i) (i) 50% of Surplus to Participation Unitholder A	0.00
i) (ii) 50% of Surplus to Participation Unitholder B	0.00