

INDEX	Page
Collateral Pool Information	2-9
Summary Data	2
Distribution by Original Loan Balance	3
Distribution by Original LVR	3
Distribution by Current Loan Balance	4
Distribution by Current LVR	4
Distribution by Seasoning	5
Distribution by Original Loan Term	5
Distribution by Remaining Term	6
Distribution by Interest Rate	7
Distribution by Repayment Types	7
Distribution by Interest Types	7
Distribution by Mortgage Insurer	8
Distribution by Metro/Non-Metro	8
Distribution by Property Location	9
Distribution of Arrears	9
Distribution by Original Occupancy Status	9
Note Information and Waterfall	10



Portfolio Data as of **31-Jul-09**

SUMMARY DATA

Aggregate Principal Balance	136,453,409.29
Number of Loans	385

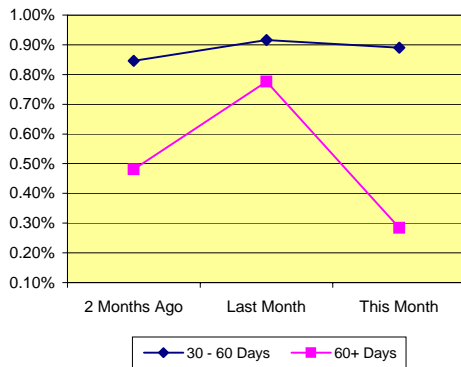
	Range	Average	Median
Principal Balance (A\$)	-33,745.06 - 1,946,471.97	359,803.97	322,193.96
Interest Rate	4.90% - 10.64%	7.54% *	
Remaining Term (Months)	329.72 - 343.07	337.26	337.63
Original Balance (A\$)	13,573.60 - 1,961,265.68	384,474.60	340,000.00
Original Term (Months)	360.00 - 360.00	360.00	360.00
Current LVR	0.00% - 100.38%	77.88% *	
Seasoning (Months)	16.93 - 30.28	22.74	22.37

* Weighted Average

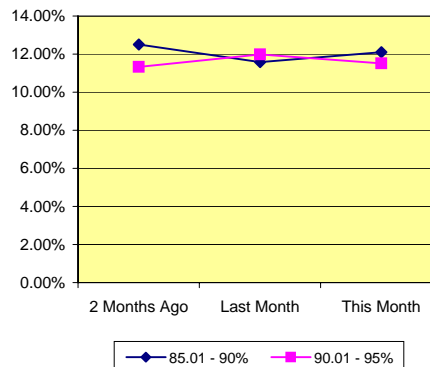
Delinquency Status	Balance (A\$)	Percentage of Pool		
	This Month	2 Months Ago	Last Month	This Month
30 - 60 Days	1,214,145.87	0.85%	0.92%	0.89%
60+ Days	387,805.67	0.48%	0.78%	0.28%

High LVR Loans	Balance (A\$)	Percentage of Pool		
	This Month	2 Months Ago	Last Month	This Month
Current LVR				
80.01 - 85%	16,090,518.18	12.48%	12.50%	11.79%
85.01 - 90%	16,508,126.81	12.51%	11.58%	12.10%
90.01 - 95%	15,719,787.10	11.33%	11.98%	11.52%
95.01 - 100%	14,087,944.61	10.16%	9.91%	10.32%

% of Delinquent Loans



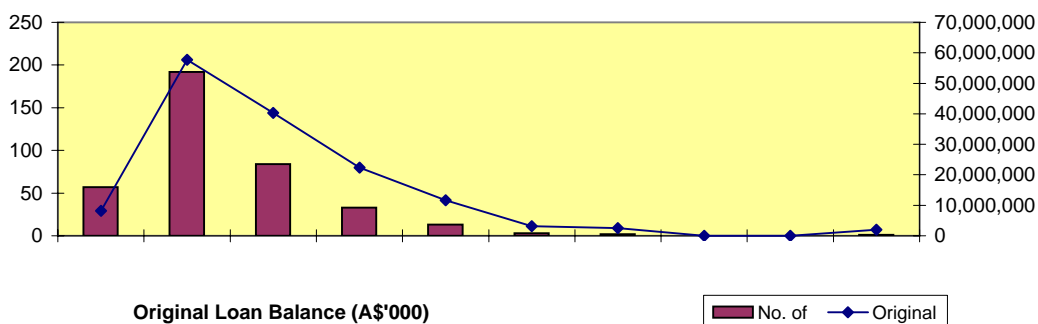
% of High LVR Loans



Distribution by Original Loan Balance

Loan Balance (A\$)	No. of Loans (LM*)	Original Balance (LM)	% (LM)	No. of Loans	Original Balance	%
0.01 - 200,000.00	59	8,497,440.86	5.53%	57	8,205,172.02	5.55%
200,000.01 - 400,000.00	201	60,524,136.96	39.42%	192	57,725,172.70	39.05%
400,000.01 - 600,000.00	87	41,901,113.19	27.29%	84	40,278,594.55	27.25%
600,000.01 - 800,000.00	33	22,368,108.50	14.57%	33	22,368,108.50	15.13%
800,000.01 - 1,000,000.00	14	12,603,776.78	8.21%	13	11,603,776.78	7.85%
1,000,000.01 - 1,200,000.00	3	3,184,339.25	2.07%	3	3,184,339.25	2.15%
1,200,000.01 - 1,400,000.00	2	2,500,181.81	1.63%	2	2,500,181.81	1.69%
1,400,000.01 - 1,600,000.00	-	-	0.00%	-	-	0.00%
1,600,000.01 - 1,800,000.00	-	-	0.00%	-	-	0.00%
1,800,000.01 - 2,000,000.00	1	1,961,265.68	1.28%	1	1,961,265.68	1.33%
	400	153,540,363.03	100.00%	385	147,826,611.29	100.00%

*Last Month

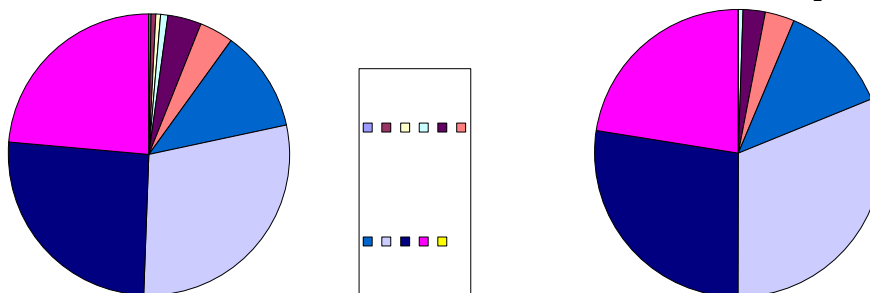


Distribution by Approval LVR

LVR Range:	No. of Loans (LM)	Current Balance (LM)	% (LM)	No. of Loans	Current Balance	%
0.01% - 10.00%	1	2,489.50	0.00%	1	2,489.50	0.00%
10.01% - 20.00%	2	99,297.95	0.07%	2	99,029.88	0.07%
20.01% - 30.00%	2	19,557.09	-0.01%	2	25,629.41	-0.02%
30.01% - 40.00%	4	795,932.53	0.56%	4	786,265.82	0.58%
40.01% - 50.00%	15	3,219,161.25	2.25%	15	3,224,168.85	2.36%
50.01% - 60.00%	15	4,848,868.75	3.39%	14	4,539,733.90	3.33%
60.01% - 70.00%	47	17,546,039.08	12.26%	45	17,109,310.81	12.54%
70.01% - 80.00%	118	45,800,004.69	32.01%	112	42,459,563.34	31.12%
80.01% - 90.00%	102	39,430,675.79	27.56%	99	37,709,882.61	27.64%
90.01% - 100.00%	94	31,337,998.68	21.91%	91	30,548,593.99	22.39%
> 100.00%	-	-	0.00%	-	-	0.00%
	400	143,060,911.13	100.00%	385	136,453,409.29	100.00%

Number of Loans

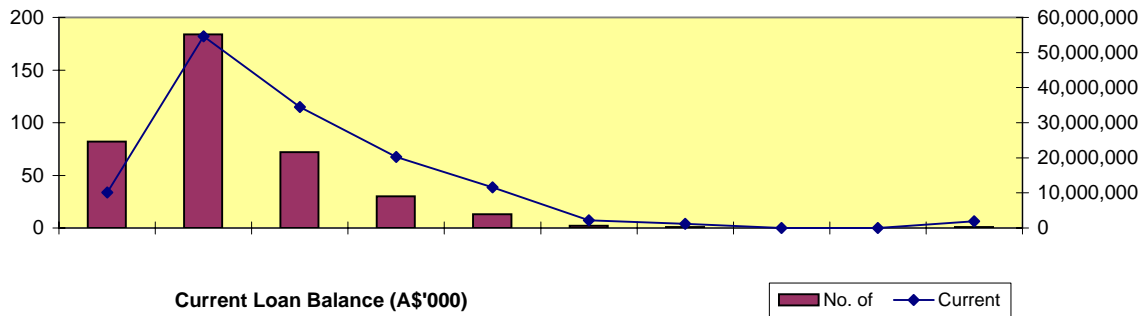
Balance Outstanding





Distribution by Current Loan Balance

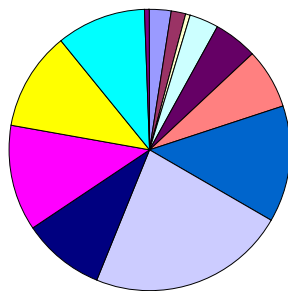
Loan Balance (A\$)	No. of Loans (LM)	Current Balance (LM)	% (LM)	No. of Loans	Current Balance	%
- 100,000.00 - 200,000.00	83	10,648,919.90	7.44%	82	10,156,972.60	7.44%
200,000.01 - 400,000.00	194	57,787,001.75	40.39%	184	54,603,098.73	40.02%
400,000.01 - 600,000.00	72	34,447,716.96	24.08%	72	34,484,440.78	25.27%
600,000.01 - 800,000.00	32	21,487,068.31	15.02%	30	20,282,104.21	14.86%
800,000.01 - 1,000,000.00	15	13,360,537.29	9.34%	13	11,600,224.14	8.50%
1,000,000.01 - 1,200,000.00	2	2,173,342.88	1.52%	2	2,173,342.88	1.59%
1,200,000.01 - 1,400,000.00	1	1,206,753.98	0.84%	1	1,206,753.98	0.88%
1,400,000.01 - 1,600,000.00	-	-	0.00%	-	0.00	0.00%
1,600,000.01 - 1,800,000.00	-	-	0.00%	-	0.00	0.00%
1,800,000.01 - 2,000,000.00	1	1,949,570.06	1.36%	1	1,946,471.97	1.43%
	400	143,060,911.13	100.00%	385	136,453,409.29	100.00%



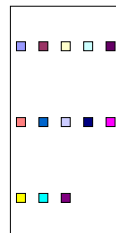
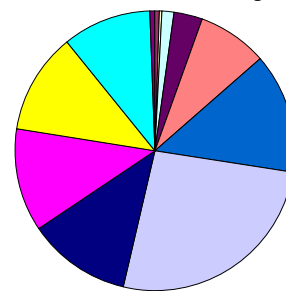
Distribution by Current LVR

LVR Range:	No. of Loans (LM)	Current Balance (LM)	% (LM)	No. of Loans	Current Balance	%
0.01% - 10.00%	8	47,343.75	0.03%	10	38,169.32	0.03%
10.01% - 20.00%	4	215,106.81	0.15%	6	534,371.55	0.39%
20.01% - 30.00%	4	595,801.43	0.42%	2	428,717.13	0.31%
30.01% - 40.00%	14	2,431,632.06	1.70%	13	2,084,129.53	1.53%
40.01% - 50.00%	18	3,865,505.28	2.70%	19	4,478,144.48	3.28%
50.01% - 60.00%	27	11,148,447.20	7.79%	27	10,848,880.81	7.95%
60.01% - 70.00%	54	20,220,029.81	14.13%	51	18,983,382.29	13.91%
70.01% - 80.00%	91	37,498,753.16	26.21%	88	35,784,207.68	26.22%
80.01% - 85.00%	41	17,887,794.57	12.50%	36	16,090,518.18	11.79%
85.01% - 90.00%	49	16,564,417.29	11.58%	47	16,508,126.81	12.10%
90.01% - 95.00%	46	17,144,388.32	11.98%	44	15,719,787.10	11.52%
95.01% - 100.00%	41	14,183,964.55	9.91%	40	14,087,944.61	10.32%
100.00% - 101.00%	3	1,257,726.90	0.88%	2	867,029.80	0.64%
	400	143,060,911.13	100.00%	385	136,453,409.29	100.00%

Number of Loans



Balance Outstanding



Distribution by Seasoning

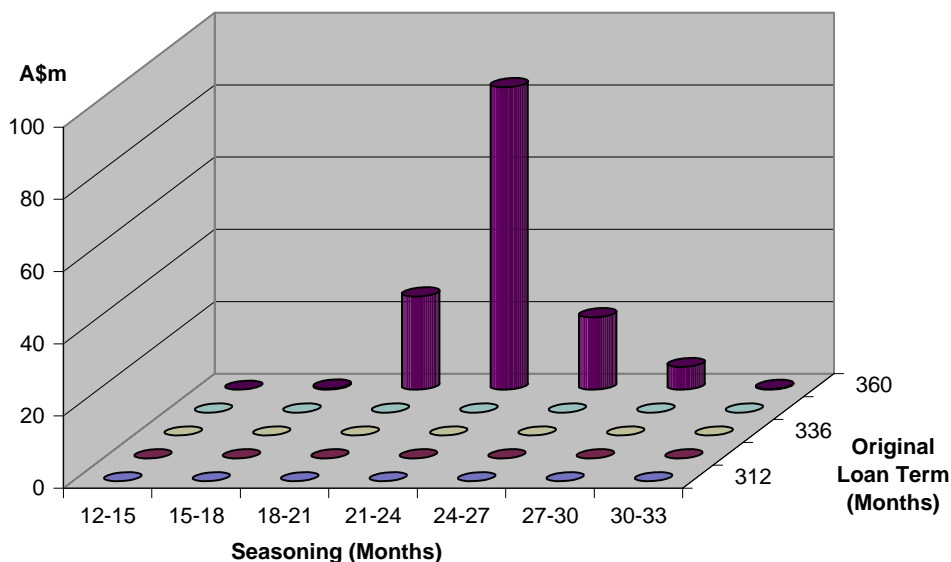
Seasoning (Months)	No. of Loans (LM)	Current Balance (LM)	% (LM)	No. of Loans	Current Balance	%
0 - 3	-	-	0.00%	-	0.00	0.00%
4 - 6	-	-	0.00%	-	0.00	0.00%
7 - 9	-	-	0.00%	-	0.00	0.00%
10 - 12	-	-	0.00%	-	0.00	0.00%
13 - 15	-	-	0.00%	-	0.00	0.00%
16 - 18	2	604,804.46	0.42%	1	308,737.46	0.23%
19 - 21	169	61,096,442.69	42.71%	65	25,822,584.23	18.92%
22 - 24	190	67,042,074.91	49.13%	245	83,804,929.73	61.42%
25 - 27	35	11,140,328.56	8.16%	62	20,047,463.71	14.69%
28 - 30	4	3,177,260.51	2.33%	12	6,469,694.16	4.74%
	400	143,060,911.13	102.75%	385	136,453,409.29	100.00%

Distribution by Original Loan Term

Original Loan Term (Months)	No. of Loans (LM)	Current Balance (LM)	% (LM)	No. of Loans	Current Balance	%
0 - 303	-	-	0.00%	-	0.00	0.00%
304 - 306	-	-	0.00%	-	-	0.00%
307 - 309	-	-	0.00%	-	-	0.00%
310 - 312	-	-	0.00%	-	-	0.00%
313 - 315	-	-	0.00%	-	-	0.00%
316 - 318	-	-	0.00%	-	-	0.00%
319 - 321	-	-	0.00%	-	-	0.00%
322 - 324	-	-	0.00%	-	-	0.00%
325 - 327	-	-	0.00%	-	-	0.00%
328 - 330	-	-	0.00%	-	-	0.00%
331 - 333	-	-	0.00%	-	-	0.00%
334 - 336	-	-	0.00%	-	-	0.00%
337 - 339	-	-	0.00%	-	-	0.00%
340 - 342	-	-	0.00%	-	-	0.00%
343 - 345	-	-	0.00%	-	-	0.00%
346 - 348	-	-	0.00%	-	-	0.00%
349 - 351	-	-	0.00%	-	-	0.00%
352 - 354	-	-	0.00%	-	-	0.00%
355 - 357	-	-	0.00%	-	-	0.00%
358 - 360	400	143,060,911.13	100.00%	385	136,453,409.29	100.00%
	400	143,060,911.13	100.00%	385	136,453,409.29	100.00%

Distribution by Remaining Term:

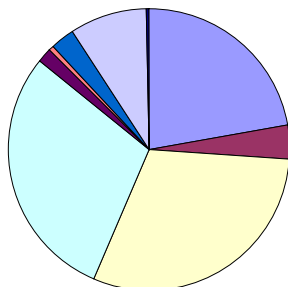
Remaining Term (Months)	No. of Loans (LM)	Current Balance (LM)	% (LM)	No. of Loans	Current Balance	%
0 - 303	-	-	0.00%	-	-	0.00%
304 - 306	-	-	0.00%	-	-	0.00%
307 - 309	-	-	0.00%	-	-	0.00%
310 - 312	-	-	0.00%	-	-	0.00%
313 - 315	-	-	0.00%	-	-	0.00%
316 - 318	-	-	0.00%	-	-	0.00%
319 - 321	-	-	0.00%	-	-	0.00%
322 - 324	-	-	0.00%	-	-	0.00%
325 - 327	-	-	0.00%	-	-	0.00%
328 - 330	-	-	0.00%	1	195,147.04	0.14%
331 - 333	4	3,177,260.51	2.22%	11	6,274,547.12	4.60%
334 - 336	35	11,441,759.53	8.00%	63	20,686,948.98	15.16%
337 - 339	190	66,727,064.33	46.64%	244	82,983,027.29	60.81%
340 - 342	169	60,927,624.79	42.59%	65	25,836,183.50	18.93%
343 - 345	2	787,201.97	0.55%	1	477,555.36	0.35%
346 - 348	-	-	0.00%	-	-	0.00%
349 - 351	-	-	0.00%	-	-	0.00%
352 - 354	-	-	0.00%	-	-	0.00%
355 - 357	-	-	0.00%	-	-	0.00%
358 - 360	-	-	0.00%	-	-	0.00%
400	143,060,911.13	100.00%	385	136,453,409.29	100.00%	



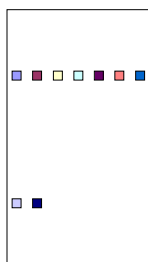
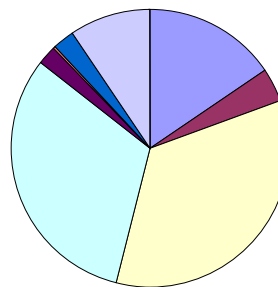
Distribution by Interest Rate

Interest Rate	No. of Loans (LM)	Current Balance (LM)	% (LM)	No. of Loans	Current Balance	%
6.00% - 6.50%	114	22,373,054.18	0.00%	109	21,306,240.55	15.61%
6.51% - 7.00%	20	5,091,665.08	3.56%	19	5,054,548.61	3.70%
7.01% - 7.50%	153	48,732,981.90	34.06%	149	47,156,114.95	34.56%
7.51% - 8.00%	149	44,467,240.35	31.08%	145	43,217,366.43	31.67%
8.01% - 8.50%	9	2,949,123.93	2.06%	9	2,944,003.00	2.16%
8.51% - 9.00%	2	414,419.47	0.29%	2	416,673.54	0.31%
9.01% - 9.50%	14	4,258,697.00	2.98%	14	3,557,394.68	2.61%
9.51% - 10.00%	47	14,310,314.86	10.00%	44	12,791,847.90	9.37%
> 10%	2	463,414.36	0.32%	1	9,219.63	0.01%
	510	143,060,911.13	84.36%	492	136,453,409.29	100.00%

Number of Loans



Balance Outstanding

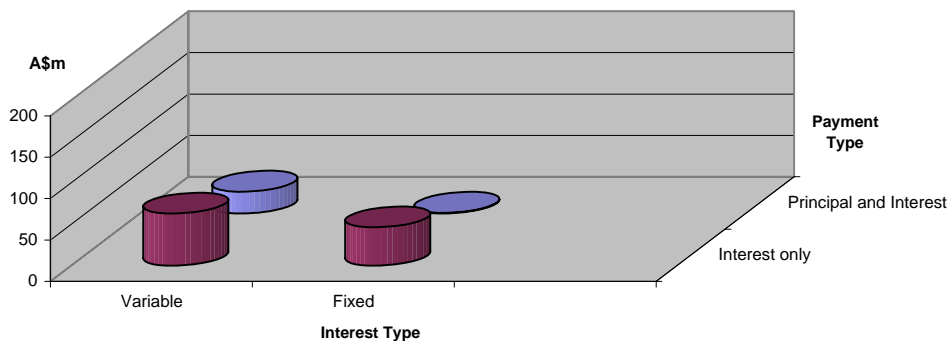


Distribution by Repayment Types:

Repayment Types	No. of Loans (LM)	Current Balance (LM)	% (LM)	No. of Loans	Current Balance	%
Principal and Interest	100	24,782,593.51	17.32%	106	27,070,844.57	19.84%
Interest only	410	118,278,317.62	82.68%	386	109,382,564.72	80.16%
	510	143,060,911.13	100.00%	492	136,453,409.29	100.00%

Distribution by Interest Types:

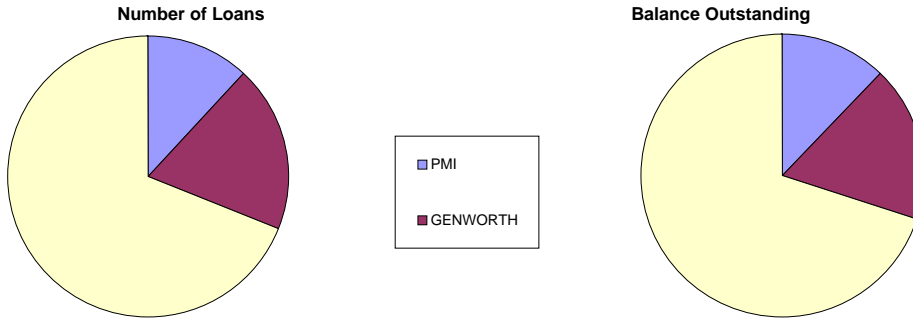
Repayment Types	No. of Loans (LM)	Current Balance (LM)	% (LM)	No. of Loans	Current Balance	%
Variable	382	100,762,375.00	70.43%	346	89,314,546.31	65.45%
Fixed	128	42,298,536.13	29.57%	146	47,138,862.98	34.55%
	510	143,060,911.13	100.00%	492	136,453,409.29	100.00%





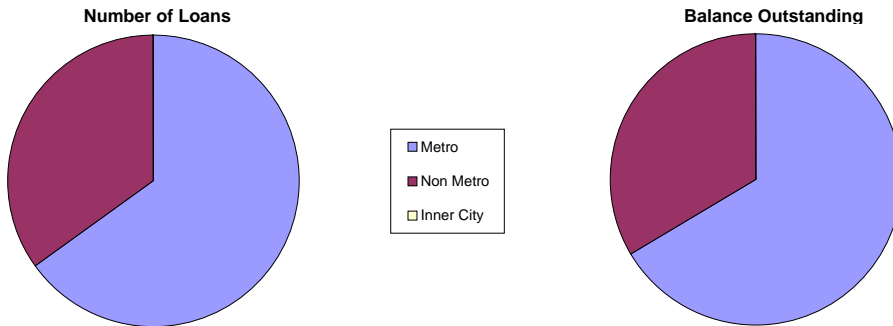
Distribution by Mortgage Insurer

Mortgage Insurer	No. of Loans (LM)	Current Balance (LM)	% (LM)	No. of Loans	Current Balance	%
PMI	50	17,779,109.55	12.43%	46	16,546,168	12.13%
GENWORTH	75	24,993,971.80	17.47%	74	24,250,987	17.77%
MGIC	275	100,287,829.78	70.10%	265	95,656,254	70.10%
	400	143,060,911.13	100.00%	385	136,453,409.29	100.00%



Distribution by Metro/Non-Metro

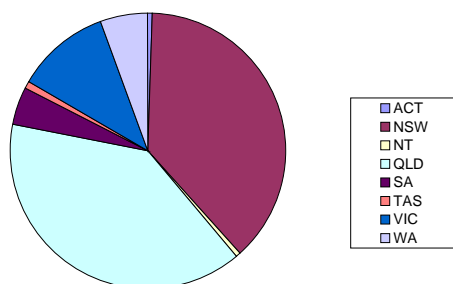
Original Occupancy Status	No. of securities (LM)	Current Balance (LM)	% (LM)	No. of securities	Current Balance	%
Metro	293	94,871,032.88	66.32%	284	90,681,611.01	66.46%
Non Metro	160	48,189,878.25	33.68%	153	45,771,798.28	33.54%
Inner City	-	-	0.00%	-	-	0.00%
	453	143,060,911.13	100.00%	437	136,453,409.29	100.00%



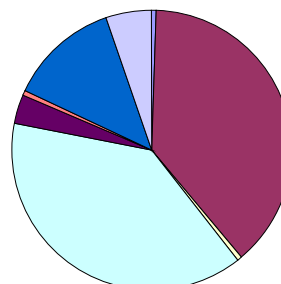
Distribution by Property Location

Property Location	No. of securities (LM)	Current Balance (LM)	% (LM)	No. of securities	Current Balance	%
ACT	3	832,803.74	0.58%	3	832,701.86	0.61%
NSW	171	55,235,997.58	38.61%	165	52,341,095.38	38.36%
NT	2	575,134.02	0.40%	2	575,511.84	0.42%
QLD	177	55,295,682.14	38.65%	171	52,943,757.55	38.80%
SA	20	4,553,532.44	3.18%	20	4,548,073.56	3.33%
TAS	3	408,017.51	0.29%	3	407,513.64	0.30%
VIC	53	19,064,224.90	13.33%	49	17,723,965.45	12.99%
WA	24	7,095,518.80	4.96%	24	7,080,790.00	5.19%
	453	143,060,911.13	100.00%	437	136,453,409.29	100.00%

Number of Loans



Balance Outstanding



Distribution of Arrears

Days in Arrears	No. of Loans (LM)	Current Balance (LM)	% (LM)	No. of Loans	Current Balance	%
0	493	135,605,964.55	94.79%	478	131,120,035.56	96.09%
1 - 30	12	5,033,958.60	3.52%	11	3,731,422.19	2.73%
31 - 60	2	1,310,161.84	0.92%	2	1,214,145.87	0.89%
61 - 90	2	726,983.59	0.51%	-	-	0.00%
>90	1	383,842.55	0.27%	1	387,805.67	0.28%
	510	143,060,911.13	100.00%	492	136,453,409.29	100.00%

Distribution by Product Type

Product Type	No. of Loans (LM)	Current Balance (LM)	% (LM)	No. of Loans	Current Balance	%
Full Documentation	225	74,342,006.62	51.97%	218	72,513,912.47	53.14%
Low Documentation	109	47,772,919.71	33.39%	106	45,032,757.44	33.00%
No Documentation	66	20,945,984.80	14.64%	61	18,906,739.38	13.86%
	400	143,060,911.13	100.00%	385	136,453,409.29	100.00%

Nautilus Trust No. 1 Series 2008-1

August 4, 2009

Monthly Waterfall Calculation Report

Collection Period (start)	July	01, 2009
Collection Period (end)	July	31, 2009
Actual number of days in the Collection Period		31
Payment Period (start)	July	06, 2009
Payment Period (end)	August	04, 2009
Actual number of days in the Payment Period		29
BBSW		3.12330 %

Receivables reconciliation

Outstanding Balance of Receivables as at the start of preceding collection period	143,060,911.13
Add:Fees charges	161,620.32
Add:Interest Charges	891,984.60
Add:Redraws and Further Advances paid during the period	428,543.25
Less:Repayments	8,089,650.01
Outstanding Balance of Receivables as at end of preceding collection period	136,453,409.29

A. OUTSTANDING NOTE ANALYSIS

Class A Notes

Number of Outstanding Notes	14,560
Margin for the Notes	2.35000 %
Interest Rate for the Notes	5.47330 %
Interest Accrued (i.e. due on next Payment Date)	369,387.20
Interest to be paid on next Payment Date	369,387.20
Unpaid Interest Carry Forward	0.00

Opening Invested Amount	84,943,913.60
Opening Stated Amount	84,943,913.60
Principal Repayments to be made on next Payment Date	6,582,867.20
Charge Offs to be made on next Payment Date	0.00
Charge Offs to be reimbursed on next Payment Date	0.00
Carry over Charge Offs as of next Payment Date	0.00
Closing Invested Amount	78,361,046.40
Closing Stated Amount	78,361,046.40

Opening Principal Factor	0.58340600
Principal Paid Factor	0.04521200
Interest Paid Factor	0.00253700
Closing Principal Factor	0.53819400

Class B Notes

Number of Outstanding Notes	6,240
Margin for the Notes	3.40000 %
Interest Rate for the Notes	6.52330 %
Interest Accrued (i.e. due on next Payment Date)	317,116.80
Interest to be paid on next Payment Date	317,116.80

Nautilus Trust No. 1 Series 2008-1

August 4, 2009

Unpaid Interest Carry Forward	0.00
Opening Invested Amount	61,183,101.18
Opening Stated Amount	61,183,101.18
Principal Repayments to be made on next Payment Date	92,988.41
Charge Offs to be made on next Payment Date	0.00
Charge Offs to be reimbursed on next Payment Date	0.00
Carry over Charge Offs as of next Payment Date	0.00
Closing Invested Amount	61,090,112.77
Closing Stated Amount	61,090,112.77
Opening Principal Factor	0.98049842
Principal Paid Factor	0.00149020
Interest Paid Factor	0.00508200
Closing Principal Factor	0.97900822
<u>Class T Notes</u>	
Number of Outstanding Notes	0
Margin for the Notes	0.00000 %
Interest Rate for the Notes	3.12330 %
Interest Accrued (i.e. due on next Payment Date)	3,019.77
Interest to be paid on next Payment Date	3,019.77
Unpaid Interest Capitalised	0.00
Opening Amount	1,216,898.82
Amount Issued During Period	92,988.41
Opening Stated Amount	1,216,898.82
Principal Repayments to be made on next Payment Date	0.00
Charge Offs to be made on next Payment Date	0.00
Charge Offs to be reimbursed on next Payment Date	0.00
Carry over Charge Offs as of next Payment Date	0.00
Closing Invested Amount	1,309,887.23
Closing Stated Amount	1,309,887.23
<u>Liquidity Notes</u>	
Number of Outstanding Notes	0
Margin for the Notes	0.00000 %
Interest Rate for the Notes	3.12330 %
Interest Accrued (i.e. due on next Payment Date)	0.00
Interest to be paid on next Payment Date	0.00
Unpaid Interest Carry Forward	0.00
Opening Invested Amount	0.00
Opening Stated Amount	0.00
Principal Repayments to be made on next Payment Date	0.00
Charge Offs to be made on next Payment Date	0.00
Charge Offs to be reimbursed on next Payment Date	0.00
Carry over Charge Offs as of next Payment Date	0.00
Closing Invested Amount	0.00
Closing Stated Amount	0.00

Nautilus Trust No. 1 Series 2008-1

August 4, 2009

Opening Principal Factor	0.00000000
Principal Paid Factor	0.00000000
Interest Paid Factor	0.00000000
Closing Principal Factor	0.00000000

B. LIQUIDITY RESERVE

Liquidity Reserve Required amount	748,800.00
Opening Balance	748,800.00
Less: Liquidity Reserve Draw towards Total Available Income	0.00
Less: Excess towards Total Available Income	0.00
Reimbursement of Liquidity Reserve Draw previously unreimbursed	0.00
Closing Balance	748,800.00

C. SPREAD RESERVE

Opening Balance	883,000.00
Floor Amount	150,000.00
Spread Reserve Required amount	883,000.00
Required Spread Reserve Draw	0.00
Available Spread Reserve Draw	733,000.00
Less: Actual Spread Reserve Draw towards Total Available Income	0.00
Less: Excess towards Total Available Income	0.00
Reimbursement of Spread Reserve Draw previously unreimbursed	0.00
Top up of Spread Reserve to next periods required reserve balance	0.00
Closing Balance	883,000.00

D. UNREIMBURSED PRINCIPAL DRAW

Opening Balance	641,909.47
Principal Draw from Current Period (Accruals for Collection Period)	497,373.20
Principal Draw from Current Period (Accruals between Determination Date and Payment Date)	84,571.23
Principal Draw from Current Period (Liquidity Shortfall)	0.00
Reimbursement of Principal Draw	641,909.47
Closing Balance	581,944.43

E. MGIC RESERVE

MGIC Reserve Required amount	3,800,000.00
Opening Balance	3,800,000.00
Less: MGIC Reserve Draw towards Total Available Income	0.00
Less: Excess towards repaying Outstanding MGIC Loan	0.00
Closing Balance	3,800,000.00

Nautilus Trust No. 1 Series 2008-1

August 4, 2009

F. AVAILABLE CASH

Collections for Preceding Collection Period	8,089,650.01
Less: Interest Posted during the collection period	891,984.60
Less: Borrower Exit Fees in the nature of Income	0.00
Less: Accrual Amount for the Collection Period	497,373.20
Less: Shortfall Adjustment calculated on the preceding Determination Date	0.00
Less: Principal component of Collection Period Distributions	428,543.25
Redraws distributed during the collection period	428,543.25
Principal component of Timely Payment Cover to the Mortgage Insurer	0.00
PRINCIPAL COLLECTIONS	6,607,501.84
Principal Collections	6,607,501.84
Reimbursement of Principal Draw	3,019.77
Reimbursement of Charge offs and Carryover Charge offs	0.00
Less: Principal Draw	581,944.43
PRINCIPAL REPAYMENT FUND	6,667,466.88
Undistributed amount from previous period	105.42
TOTAL AVAILABLE PRINCIPAL FOR DISTRIBUTION	6,667,572.30
Shortfall Adjustment applicable next period	0.00
Required Payments	854,243.11
Collections	8,089,650.01
Less: Collection Period Distributions	428,543.25
Redraws distributed during the collection period	428,543.25
Timely Payment Cover to the Mortgage Insurer	0.00
Break Costs paid during collection Period	0.00
Less: Principal Collections	6,607,501.84
Other Income	18,603.68
Net payments to be received under the Derivatives Contracts	0.00
INTEREST COLLECTIONS	1,072,208.60
Interest Collections	1,072,208.60
Principal Draw	581,944.43
Liquidity Reserve Draw	0.00
Excess Liquidity Reserve	0.00
Spread Reserve Draw	0.00
MGIC Reserve Draw	0.00
TOTAL INTEREST COLLECTIONS	1,654,153.03
Undistributed amount from previous period	0.00
TOTAL AVAILABLE INCOME FOR DISTRIBUTION	1,654,153.03

Nautilus Trust No. 1 Series 2008-1

August 4, 2009

G. Distribution of Total Interest Collections - Clause 1.10 of Supplementary Terms Notice

Amount available for Distribution	1,654,153.03
a) \$100 to the Participation Unitholders	100.00
b) Taxes	0.00
c) Fees and expenses to Trustee, Security Trustee, Custodian and Standby-Servicer	5,325.64
d) Other Series Expenses	3,899.72
e) (i) Fees and expenses to Manager	56,245.93
e) (ii) Fees and expenses to the Servicer	23,851.31
f) (i) Unpaid Interest and Interest for Class A Notes	369,387.20
f) (ii) Unpaid Interest and Interest for Liquidity Notes	0.00
f) (iii) Net payment to the Derivative Counterparty (DC) including Break Cost if the DC is not the Defaulting Party	78,316.51
g) Unpaid Interest and Interest for Class B Notes	317,116.80
h) Reimbursement of outstanding Liquidity Reserve Draw from previous periods	0.00
i) Reimbursement of outstanding Principal Draw and Accrual Amount	641,909.47
j) Reimbursement of liquidation losses and carry-over liquidation losses	0.00
k) Unpaid Interest and Interest for Class T Notes	3,019.77
l) Reimbursement of outstanding Spread Reserve Draw from previous periods	0.00
m) Tax Shortfall	0.00
n) Tax Amount	0.00
o) Break Costs under Derivative Contract where Derivative Counterparty is the Defaulting Party	0.00
p) Amounts (non-principal) due to any other Secured Creditor	0.00
q) All Class T Interest previously capitalised, after Termination Date	0.00
r) (i) 60% of Surplus to Participation Unitholder A	92,988.41
r) (ii) 40% of Surplus to Participation Unitholder B	61,992.27

H. Distribution of Principal Repayment Fund - Clause 1.12 of Supplementary Terms Notice

Amount available for Distribution	6,667,572.30
a) Principal Draw	84,571.23
b) Repayment of Further Advances and Redraws	0.00
c) Principal payment to Liquidity Noteholders	0.00
d) If Pro_Rata test is satisfied, pari passu payments towards reducing Class A, AB and B notes outstanding balance to zero	0.00
e) Principal payment to Class A Noteholders	6,582,867.20
f) Principal payment to Class B Noteholders	0.00
g) Principal payment to Class T Noteholders	0.00
h) Amount upto in aggregate to the subscription proceeds of the residual unit	0.00
i) (i) 50% of Surplus to Participation Unitholder A	0.00
i) (ii) 50% of Surplus to Participation Unitholder B	0.00