

**INDEX**

Page

Collateral Pool Information**2-9**

Summary Data	2
Distribution by Original Loan Balance	3
Distribution by Original LVR	3
Distribution by Current Loan Balance	4
Distribution by Current LVR	4
Distribution by Seasoning	5
Distribution by Original Loan Term	5
Distribution by Remaining Term	6
Distribution by Interest Rate	7
Distribution by Repayment Types	7
Distribution by Interest Types	7
Distribution by Mortgage Insurer	8
Distribution by Metro/Non-Metro	8
Distribution by Property Location	9
Distribution of Arrears	9
Distribution by Original Occupancy Status	9

Note Information and Waterfall**10**



Portfolio Data as of **31-Mar-09**

SUMMARY DATA

Aggregate Principal Balance	155,565,431.92
Number of Loans	434

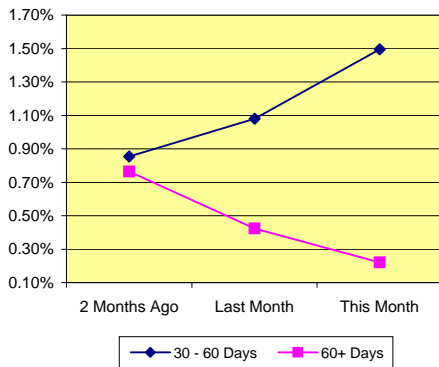
	Range		Average	Median
Principal Balance (A\$)	-15,870.65	- 1,957,597.99	359,803.97	322,193.96
Interest Rate	6.05%	- 10.64%	8.22% *	
Remaining Term (Months)	333.73	- 347.08	341.30	341.62
Original Balance (A\$)	13,573.60	- 1,961,265.68	384,474.60	340,000.00
Original Term (Months)	360.00	- 360.00	360.00	360.00
Current LVR	0.00%	- 100.07%	78.09% *	
Seasoning (Months)	12.92	- 26.27	18.70	18.38

* Weighted Average

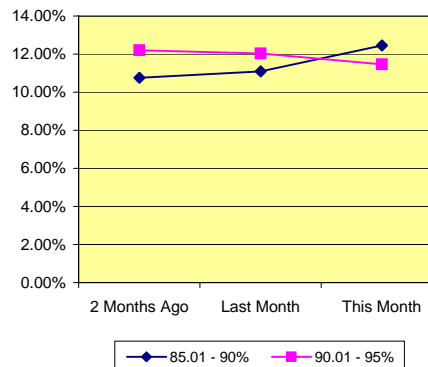
Delinquency Status	Balance (A\$)	Percentage of Pool		
	This Month	2 Months Ago	Last Month	This Month
30 - 60 Days	2,325,636.76	0.85%	1.08%	1.49%
60+ Days	343,089.56	0.76%	0.42%	0.22%

High LVR Loans	Balance (A\$)	Percentage of Pool		
	This Month	2 Months Ago	Last Month	This Month
Current LVR				
80.01 - 85%	19,843,888.94	14.06%	13.05%	12.76%
85.01 - 90%	19,380,135.37	10.76%	11.09%	12.46%
90.01 - 95%	17,840,260.89	12.20%	12.03%	11.47%
95.01 - 100%	16,291,637.75	10.46%	10.82%	10.47%

% of Delinquent Loans



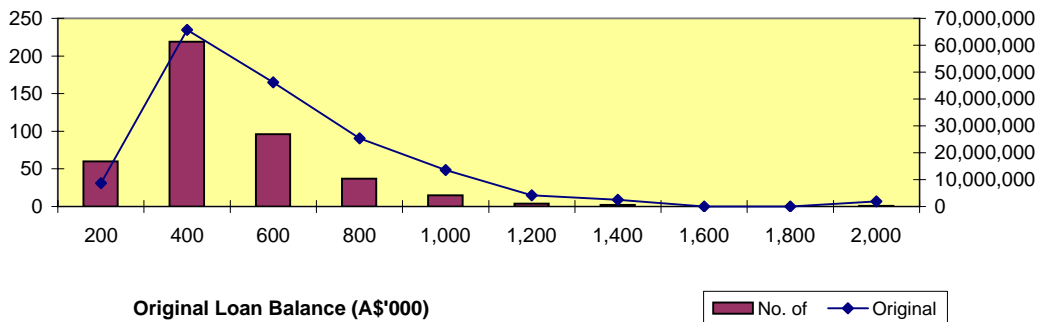
% of High LVR Loans



Distribution by Original Loan Balance

Loan Balance (A\$)	No. of Loans (LM*)	Original Balance (LM)	% (LM)	No. of Loans	Original Balance	%
0.01 - 200,000.00	61	8,840,940.86	5.11%	60	8,665,440.86	5.15%
200,000.01 - 400,000.00	228	68,568,306.51	39.60%	219	65,737,263.35	39.08%
400,000.01 - 600,000.00	99	47,467,562.83	27.41%	96	46,142,808.73	27.43%
600,000.01 - 800,000.00	38	26,034,173.26	15.04%	37	25,409,782.53	15.11%
800,000.01 - 1,000,000.00	15	13,552,724.08	7.83%	15	13,552,724.08	8.06%
1,000,000.01 - 1,200,000.00	4	4,224,339.25	2.44%	4	4,224,339.25	2.51%
1,200,000.01 - 1,400,000.00	2	2,500,181.81	1.44%	2	2,500,181.81	1.49%
1,400,000.01 - 1,600,000.00	-	-	0.00%	-	-	0.00%
1,600,000.01 - 1,800,000.00	-	-	0.00%	-	-	0.00%
1,800,000.01 - 2,000,000.00	1	1,961,265.68	1.13%	1	1,961,265.68	1.17%
	448	173,149,494.28	100.00%	434	168,193,806.29	100.00%

*Last Month



Original Loan Balance (A\$'000)

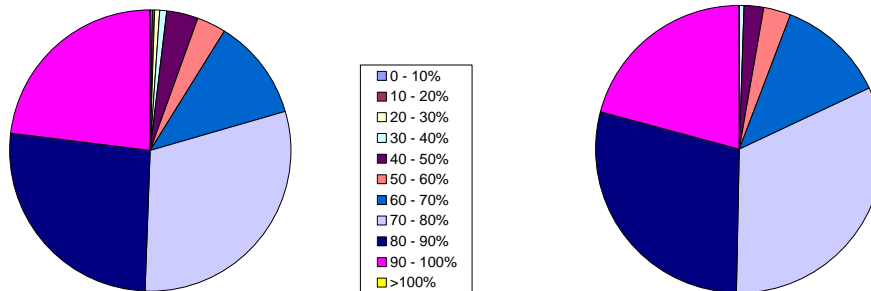
No. of Original

Distribution by Approval LVR

LVR Range:	No. of Loans (LM)	Current Balance (LM)	% (LM)	No. of Loans	Current Balance	%
0.01% - 10.00%	1	2,489.50	0.00%	1	2,489.50	0.00%
10.01% - 20.00%	2	99,393.34	0.06%	2	99,137.96	0.06%
20.01% - 30.00%	2	13,119.18	0.01%	2	12,701.26	0.01%
30.01% - 40.00%	4	834,075.00	0.52%	4	824,479.48	0.53%
40.01% - 50.00%	15	3,507,790.15	2.17%	15	3,497,194.66	2.25%
50.01% - 60.00%	17	5,494,403.81	3.40%	15	4,829,736.23	3.10%
60.01% - 70.00%	50	19,303,103.63	11.95%	50	18,682,549.07	12.01%
70.01% - 80.00%	134	51,461,597.87	31.86%	131	50,348,655.00	32.36%
80.01% - 90.00%	120	47,336,291.50	29.31%	114	44,904,805.25	28.87%
90.01% - 100.00%	103	33,467,347.64	20.72%	100	32,363,683.51	20.80%
> 100.00%	-	-	0.00%	-	-	0.00%
	448	161,519,611.62	100.00%	434	155,565,431.92	100.00%

Number of Loans

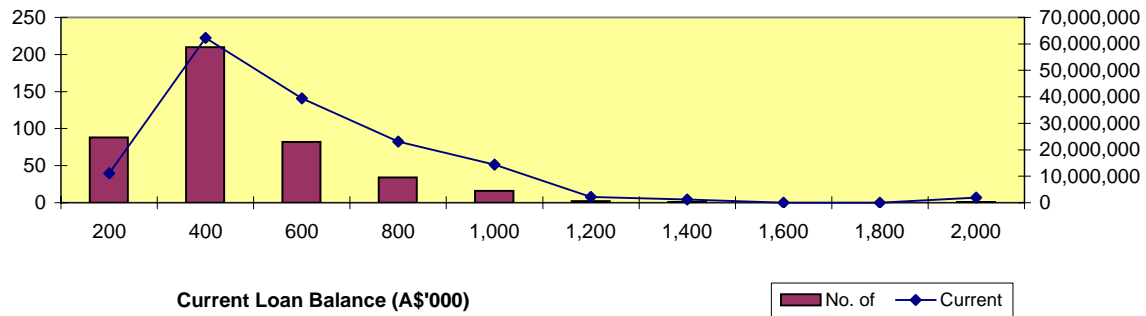
Balance Outstanding





Distribution by Current Loan Balance

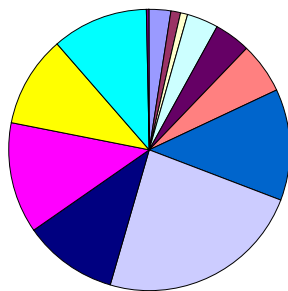
Loan Balance (A\$)	No. of Loans (LM)	Current Balance (LM)	% (LM)	No. of Loans	Current Balance	%
- 15,000.00 - 200,000.00	90	11,580,946.38	7.17%	88	11,071,986.17	7.12%
200,000.01 - 400,000.00	217	64,887,139.46	40.17%	210	62,286,942.50	40.04%
400,000.01 - 600,000.00	86	41,455,890.08	25.67%	82	39,360,897.74	25.30%
600,000.01 - 800,000.00	35	23,865,416.00	14.78%	34	23,104,449.43	14.85%
800,000.01 - 1,000,000.00	16	14,389,654.18	8.91%	16	14,403,461.23	9.26%
1,000,000.01 - 1,200,000.00	2	2,173,342.88	1.35%	2	2,173,342.88	1.40%
1,200,000.01 - 1,400,000.00	1	1,206,753.98	0.75%	1	1,206,753.98	0.78%
1,400,000.01 - 1,600,000.00	-	-	0.00%	-	0.00	0.00%
1,600,000.01 - 1,800,000.00	-	-	0.00%	-	0.00	0.00%
1,800,000.01 - 2,000,000.00	1	1,960,468.66	1.21%	1	1,957,597.99	1.26%
	448	161,519,611.62	100.00%	434	155,565,431.92	100.00%



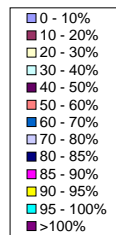
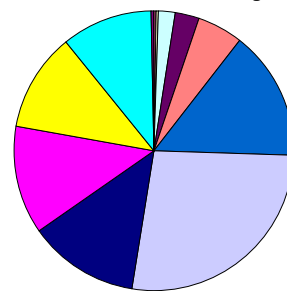
Distribution by Current LVR

LVR Range:	No. of Loans (LM)	Current Balance (LM)	% (LM)	No. of Loans	Current Balance	%
0.01% - 10.00%	10	104,151.28	0.06%	11	168,270.79	0.11%
10.01% - 20.00%	5	375,343.62	0.23%	5	432,273.79	0.28%
20.01% - 30.00%	4	543,777.91	0.34%	3	437,590.73	0.28%
30.01% - 40.00%	14	2,517,988.02	1.56%	16	2,737,281.99	1.76%
40.01% - 50.00%	22	5,764,336.20	3.57%	18	4,344,915.61	2.79%
50.01% - 60.00%	28	9,898,591.95	6.13%	25	8,385,384.84	5.39%
60.01% - 70.00%	56	22,913,241.96	14.19%	56	23,110,154.85	14.86%
70.01% - 80.00%	102	43,083,239.15	26.67%	102	42,168,310.85	27.11%
80.01% - 85.00%	51	21,085,574.02	13.05%	47	19,843,888.94	12.76%
85.01% - 90.00%	54	17,907,261.42	11.09%	56	19,380,135.37	12.46%
90.01% - 95.00%	50	19,425,787.69	12.03%	46	17,840,260.89	11.47%
95.01% - 100.00%	51	17,475,246.18	10.82%	48	16,291,637.75	10.47%
100.00% - 101.00%	1	425,072.22	0.26%	1	425,325.52	0.27%
	448	161,519,611.62	100.00%	434	155,565,431.92	100.00%

Number of Loans



Balance Outstanding



Distribution by Seasoning

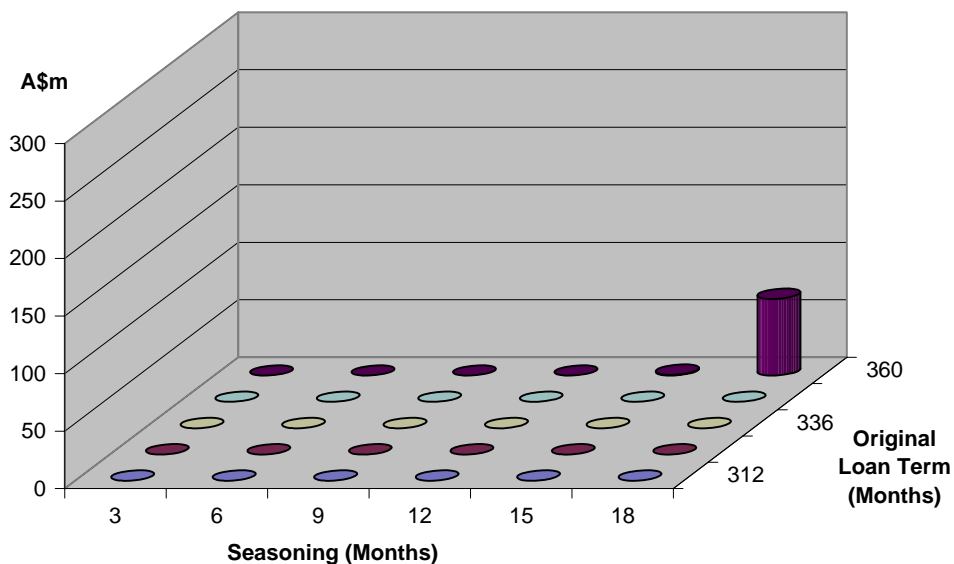
Seasoning (Months)	No. of Loans (LM)	Current Balance (LM)	% (LM)	No. of Loans	Current Balance	%
0 - 3	-	-	0.00%	-	0.00	0.00%
4 - 6	-	-	0.00%	-	0.00	0.00%
7 - 9	-	-	0.00%	-	0.00	0.00%
10 - 12	1	308,737.46	0.19%	-	0.00	0.00%
13 - 15	1	296,067.00	0.18%	2	604,804.46	0.39%
16 - 18	291	104,696,940.19	64.82%	183	66,839,349.53	42.97%
19 - 21	130	44,890,183.07	27.79%	209	73,120,213.49	47.00%
22 - 24	23	9,162,068.20	5.89%	36	11,486,381.62	7.38%
25 - 27	2	2,165,615.70	1.39%	4	3,514,682.82	2.26%
28 - 30	-	-	0.00%	-	0.00	0.00%
	448	161,519,611.62	100.27%	434	155,565,431.92	100.00%

Distribution by Original Loan Term

Original Loan Term (Months)	No. of Loans (LM)	Current Balance (LM)	% (LM)	No. of Loans	Current Balance	%
0 - 303	-	-	0.00%	-	0.00	0.00%
304 - 306	-	-	0.00%	-	-	0.00%
307 - 309	-	-	0.00%	-	-	0.00%
310 - 312	-	-	0.00%	-	-	0.00%
313 - 315	-	-	0.00%	-	-	0.00%
316 - 318	-	-	0.00%	-	-	0.00%
319 - 321	-	-	0.00%	-	-	0.00%
322 - 324	-	-	0.00%	-	-	0.00%
325 - 327	-	-	0.00%	-	-	0.00%
328 - 330	-	-	0.00%	-	-	0.00%
331 - 333	-	-	0.00%	-	-	0.00%
334 - 336	-	-	0.00%	-	-	0.00%
337 - 339	-	-	0.00%	-	-	0.00%
340 - 342	-	-	0.00%	-	-	0.00%
343 - 345	-	-	0.00%	-	-	0.00%
346 - 348	-	-	0.00%	-	-	0.00%
349 - 351	-	-	0.00%	-	-	0.00%
352 - 354	-	-	0.00%	-	-	0.00%
355 - 357	-	-	0.00%	-	-	0.00%
358 - 360	448	161,519,611.62	100.00%	434	155,565,431.92	100.00%
	448	161,519,611.62	100.00%	434	155,565,431.92	100.00%

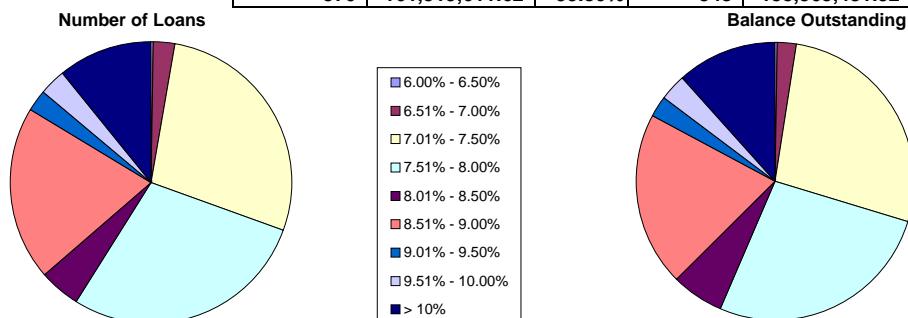
Distribution by Remaining Term:

Remaining Term (Months)	No. of Loans (LM)	Current Balance (LM)	% (LM)	No. of Loans	Current Balance	%
0 - 303	-	-	0.00%	-	-	0.00%
304 - 306	-	-	0.00%	-	-	0.00%
307 - 309	-	-	0.00%	-	-	0.00%
310 - 312	-	-	0.00%	-	-	0.00%
313 - 315	-	-	0.00%	-	-	0.00%
316 - 318	-	-	0.00%	-	-	0.00%
319 - 321	-	-	0.00%	-	-	0.00%
322 - 324	-	-	0.00%	-	-	0.00%
325 - 327	-	-	0.00%	-	-	0.00%
328 - 330	-	-	0.00%	-	-	0.00%
331 - 333	-	-	0.00%	-	-	0.00%
334 - 336	2	2,165,615.70	1.34%	4	3,514,682.82	2.26%
337 - 339	23	9,505,813.96	5.89%	36	11,789,638.71	7.58%
340 - 342	130	44,532,867.03	27.57%	209	72,803,386.84	46.80%
343 - 345	291	104,528,122.29	64.72%	183	66,670,531.63	42.86%
346 - 348	1	478,455.18	0.30%	2	787,191.92	0.51%
349 - 351	1	308,737.46	0.19%	-	-	0.00%
352 - 354	-	-	0.00%	-	-	0.00%
355 - 357	-	-	0.00%	-	-	0.00%
358 - 360	-	-	0.00%	-	-	0.00%
448	161,519,611.62	100.00%	434	155,565,431.92	100.00%	



Distribution by Interest Rate

Interest Rate	No. of Loans (LM)	Current Balance (LM)	% (LM)	No. of Loans	Current Balance	%
6.00% - 6.50%	1	328,121.88	0.00%	1	326,910.14	0.21%
6.51% - 7.00%	14	3,460,124.26	2.14%	14	3,452,497.47	2.22%
7.01% - 7.50%	155	43,046,573.28	26.65%	152	42,657,141.52	27.42%
7.51% - 8.00%	163	42,459,444.33	26.29%	156	41,226,400.49	26.50%
8.01% - 8.50%	30	10,271,423.62	6.36%	26	9,641,399.44	6.20%
8.51% - 9.00%	112	32,553,389.58	20.15%	109	31,300,959.36	20.12%
9.01% - 9.50%	14	4,409,152.05	2.73%	14	3,869,517.09	2.49%
9.51% - 10.00%	17	5,151,270.30	3.19%	17	5,150,387.19	3.31%
> 10%	64	19,840,112.32	12.28%	59	17,940,219.22	11.53%
	570	161,519,611.62	99.80%	548	155,565,431.92	100.00%

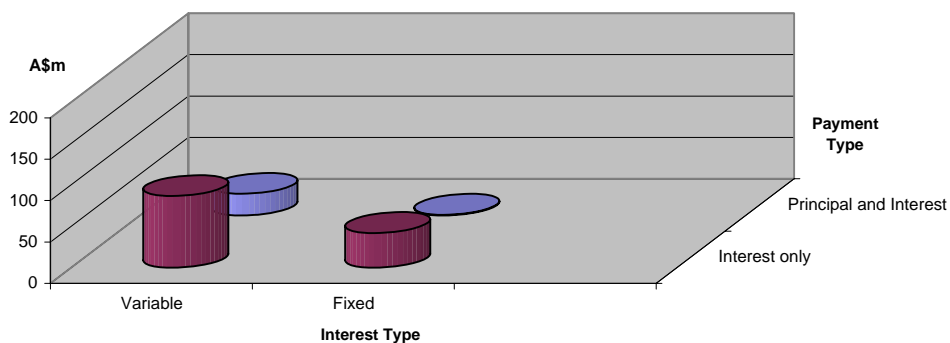


Distribution by Repayment Types:

Repayment Types	No. of Loans (LM)	Current Balance (LM)	% (LM)	No. of Loans	Current Balance	%
Principal and Interest	113	28,374,345.92	17.57%	107	26,921,392.64	17.31%
Interest only	457	133,145,265.70	82.43%	441	128,644,039.28	82.69%
	570	161,519,611.62	100.00%	548	155,565,431.92	100.00%

Distribution by Interest Types:

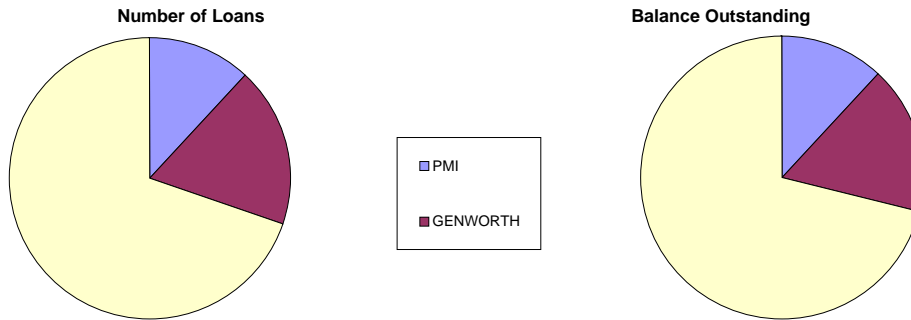
Repayment Types	No. of Loans (LM)	Current Balance (LM)	% (LM)	No. of Loans	Current Balance	%
Variable	436	118,023,583.18	73.07%	418	112,869,665.00	72.55%
Fixed	134	43,496,028.44	26.93%	130	42,695,766.92	27.45%
	570	161,519,611.62	100.00%	548	155,565,431.92	100.00%





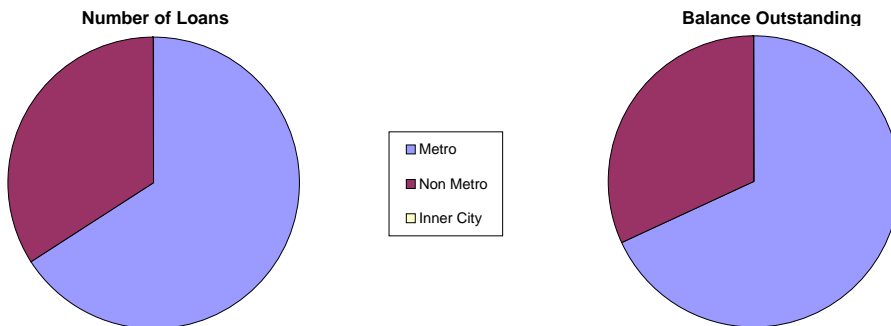
Distribution by Mortgage Insurer

Mortgage Insurer	No. of Loans (LM)	Current Balance (LM)	% (LM)	No. of Loans	Current Balance	%
PMI	54	19,333,167.82	11.97%	52	18,589,272	11.95%
GENWORTH	81	26,663,393.53	16.51%	79	26,154,848	16.81%
MGIC	313	115,523,050.27	71.52%	303	110,821,311	71.24%
	448	161,519,611.62	100.00%	434	155,565,431.92	100.00%



Distribution by Metro/Non-Metro

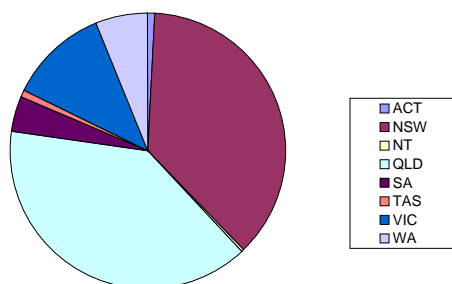
Original Occupancy Status	No. of securities (LM)	Current Balance (LM)	% (LM)	No. of securities	Current Balance	%
Metro	329	110,003,507.81	68.11%	319	105,811,640.90	68.02%
Non Metro	170	51,516,103.81	31.89%	166	49,753,791.02	31.98%
Inner City	-	-	0.00%	-	-	0.00%
	499	161,519,611.62	100.00%	485	155,565,431.92	100.00%



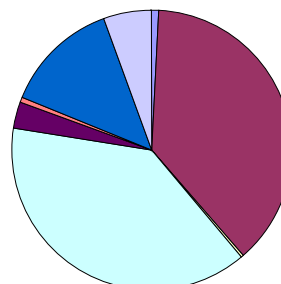
Distribution by Property Location

Property Location	No. of securities (LM)	Current Balance (LM)	% (LM)	No. of securities	Current Balance	%
ACT	4	1,233,311.54	0.76%	4	1,232,354.62	0.79%
NSW	184	60,832,098.71	37.66%	179	58,836,208.08	37.82%
NT	2	575,067.48	0.36%	2	575,621.72	0.37%
QLD	196	61,911,650.64	38.33%	189	59,819,331.40	38.45%
SA	21	4,859,280.43	3.01%	21	4,867,096.16	3.13%
TAS	4	644,714.47	0.40%	4	644,231.41	0.41%
VIC	57	21,124,318.54	13.08%	56	20,807,071.26	13.38%
WA	31	10,339,169.82	6.40%	30	8,783,517.28	5.65%
	499	161,519,611.62	100.00%	485	155,565,431.92	100.00%

Number of Loans



Balance Outstanding



Distribution of Arrears

Days in Arrears	No. of Loans (LM)	Current Balance (LM)	% (LM)	No. of Loans	Current Balance	%
0	549	151,966,787	94.09%	532	147,055,171.05	94.53%
1 - 30	18	7,125,674	4.41%	13	5,841,534.55	3.76%
31 - 60	4	1,744,026	1.08%	6	2,325,636.76	1.49%
61 - 90	2	683,125	0.42%	1	343,089.56	0.22%
>90	-	-	0.00%	-	-	0.00%
	573	161,519,611.62	100.00%	552	155,565,431.92	100.00%

Distribution by Product Type

Product Type	No. of Loans (LM)	Current Balance (LM)	% (LM)	No. of Loans	Current Balance	%
Full Documentation	242	80,806,084.56	50.03%	237	79,113,237.04	50.86%
Low Documentation	130	55,689,239.20	34.48%	122	52,571,089.23	33.79%
No Documentation	76	25,024,287.86	15.49%	75	23,881,105.65	15.35%
	448	161,519,611.62	100.00%	434	155,565,431.92	100.00%

Nautilus Trust No. 1 Series 2008-1

April 6, 2009

Monthly Waterfall Calculation Report

Collection Period (start)	March 01, 2009
Collection Period (end)	March 31, 2009
Actual number of days in the Collection Period	31
Payment Period (start)	March 04, 2009
Payment Period (end)	April 06, 2009
Actual number of days in the Payment Period	33
BBSW	3.38330 %

Receivables reconciliation

Outstanding Balance of Receivables as at the start of preceding collection period	161,519,611.62
Add:Fees charges	211,227.78
Add:Interest Charges	1,008,699.17
Add:Redraws and Further Advances paid during the period	754,539.86
Less:Repayments	7,928,646.51
Outstanding Balance of Receivables as at end of preceding collection period	155,565,431.92

A. OUTSTANDING NOTE ANALYSIS

Class A Notes

Number of Outstanding Notes	14,560
Margin for the Notes	2.35000 %
Interest Rate for the Notes	5.73330 %
Interest Accrued (i.e. due on next Payment Date)	533,478.40
Interest to be paid on next Payment Date	533,478.40
Unpaid Interest Carry Forward	0.00

Opening Invested Amount	102,915,176.00
Opening Stated Amount	102,915,176.00
Principal Repayments to be made on next Payment Date	5,677,235.20
Charge Offs to be made on next Payment Date	0.00
Charge Offs to be reimbursed on next Payment Date	0.00
Carry over Charge Offs as of next Payment Date	0.00
Closing Invested Amount	97,237,940.80
Closing Stated Amount	97,237,940.80

Opening Principal Factor	0.70683500
Principal Paid Factor	0.03899200
Interest Paid Factor	0.00366400
Closing Principal Factor	0.66784300

Class B Notes

Number of Outstanding Notes	6,240
Margin for the Notes	3.40000 %
Interest Rate for the Notes	6.78330 %
Interest Accrued (i.e. due on next Payment Date)	377,270.40
Interest to be paid on next Payment Date	377,270.40

Nautilus Trust No. 1 Series 2008-1

April 6, 2009

Unpaid Interest Carry Forward	0.00
Opening Invested Amount	61,512,447.17
Opening Stated Amount	61,512,447.17
Principal Repayments to be made on next Payment Date	108,038.21
Charge Offs to be made on next Payment Date	0.00
Charge Offs to be reimbursed on next Payment Date	0.00
Carry over Charge Offs as of next Payment Date	0.00
Closing Invested Amount	61,404,408.96
Closing Stated Amount	61,404,408.96
Opening Principal Factor	0.98577640
Principal Paid Factor	0.00173138
Interest Paid Factor	0.00604600
Closing Principal Factor	0.98404502
<u>Class T Notes</u>	
Number of Outstanding Notes	0
Margin for the Notes	0.00000 %
Interest Rate for the Notes	3.38330 %
Interest Accrued (i.e. due on next Payment Date)	2,714.91
Interest to be paid on next Payment Date	2,714.91
Unpaid Interest Capitalised	0.00
Opening Amount	887,552.83
Amount Issued During Period	108,038.21
Opening Stated Amount	887,552.83
Principal Repayments to be made on next Payment Date	0.00
Charge Offs to be made on next Payment Date	0.00
Charge Offs to be reimbursed on next Payment Date	0.00
Carry over Charge Offs as of next Payment Date	0.00
Closing Invested Amount	995,591.04
Closing Stated Amount	995,591.04
<u>Liquidity Notes</u>	
Number of Outstanding Notes	0
Margin for the Notes	0.00000 %
Interest Rate for the Notes	3.38330 %
Interest Accrued (i.e. due on next Payment Date)	0.00
Interest to be paid on next Payment Date	0.00
Unpaid Interest Carry Forward	0.00
Opening Invested Amount	0.00
Opening Stated Amount	0.00
Principal Repayments to be made on next Payment Date	0.00
Charge Offs to be made on next Payment Date	0.00
Charge Offs to be reimbursed on next Payment Date	0.00
Carry over Charge Offs as of next Payment Date	0.00
Closing Invested Amount	0.00
Closing Stated Amount	0.00

Nautilus Trust No. 1 Series 2008-1

April 6, 2009

Opening Principal Factor	0.00000000
Principal Paid Factor	0.00000000
Interest Paid Factor	0.00000000
Closing Principal Factor	0.00000000

B. LIQUIDITY RESERVE

Liquidity Reserve Required amount	748,800.00
Opening Balance	748,800.00
Less: Liquidity Reserve Draw towards Total Available Income	0.00
Less: Excess towards Total Available Income	0.00
Reimbursement of Liquidity Reserve Draw previously unreimbursed	0.00
Closing Balance	748,800.00

C. SPREAD RESERVE

Opening Balance	883,000.00
Floor Amount	150,000.00
Spread Reserve Required amount	883,000.00
Required Spread Reserve Draw	0.00
Available Spread Reserve Draw	733,000.00
Less: Actual Spread Reserve Draw towards Total Available Income	0.00
Less: Excess towards Total Available Income	0.00
Reimbursement of Spread Reserve Draw previously unreimbursed	0.00
Top up of Spread Reserve to next periods required reserve balance	0.00
Closing Balance	883,000.00

D. UNREIMBURSED PRINCIPAL DRAW

Opening Balance	763,219.10
Principal Draw from Current Period (Accruals for Collection Period)	620,665.82
Principal Draw from Current Period (Accruals between Determination Date and Payment Date)	209,719.10
Principal Draw from Current Period (Liquidity Shortfall)	0.00
Reimbursement of Principal Draw	763,219.10
Closing Balance	830,384.92

E. MGIC RESERVE

MGIC Reserve Required amount	3,800,000.00
Opening Balance	3,800,000.00
Less: MGIC Reserve Draw towards Total Available Income	0.00
Less: Excess towards repaying Outstanding MGIC Loan	0.00
Closing Balance	3,800,000.00

Nautilus Trust No. 1 Series 2008-1

April 6, 2009

F. AVAILABLE CASH

Collections for Preceding Collection Period	7,928,646.51
Less: Interest Posted during the collection period	1,008,699.17
Less: Borrower Exit Fees in the nature of Income	0.00
Less: Accrual Amount for the Collection Period	620,665.82
Less: Shortfall Adjustment calculated on the preceding Determination Date	0.00
Less: Principal component of Collection Period Distributions	754,539.86
Redraws distributed during the collection period	754,539.86
Principal component of Timely Payment Cover to the Mortgage Insurer	0.00
PRINCIPAL COLLECTIONS	5,954,179.70
Principal Collections	5,954,179.70
Reimbursement of Principal Draw	2,714.91
Reimbursement of Charge offs and Carryover Charge offs	0.00
Less: Principal Draw	830,384.92
PRINCIPAL REPAYMENT FUND	5,887,013.88
Undistributed amount from previous period	5.51
TOTAL AVAILABLE PRINCIPAL FOR DISTRIBUTION	5,887,019.39
Shortfall Adjustment applicable next period	0.00
Required Payments	1,122,426.59
Collections	7,928,646.51
Less: Collection Period Distributions	754,539.86
Redraws distributed during the collection period	754,539.86
Timely Payment Cover to the Mortgage Insurer	0.00
Break Costs paid during collection Period	0.00
Less: Principal Collections	5,954,179.70
Other Income	18,112.42
Net payments to be received under the Derivatives Contracts	0.00
INTEREST COLLECTIONS	1,238,039.37
Interest Collections	1,238,039.37
Principal Draw	830,384.92
Liquidity Reserve Draw	0.00
Excess Liquidity Reserve	0.00
Spread Reserve Draw	0.00
MGIC Reserve Draw	0.00
TOTAL INTEREST COLLECTIONS	2,068,424.29
Undistributed amount from previous period	0.00
TOTAL AVAILABLE INCOME FOR DISTRIBUTION	2,068,424.29

Nautilus Trust No. 1 Series 2008-1

April 6, 2009

G. Distribution of Total Interest Collections - Clause 1.10 of Supplementary Terms Notice

Amount available for Distribution	2,068,424.29
a) \$100 to the Participation Unitholders	100.00
b) Taxes	0.00
c) Fees and expenses to Trustee, Security Trustee, Custodian and Standby-Servicer	6,630.44
d) Other Series Expenses	223.30
e) (i) Fees and expenses to Manager	106,815.17
e) (ii) Fees and expenses to the Servicer	30,942.60
f) (i) Unpaid Interest and Interest for Class A Notes	533,478.40
f) (ii) Unpaid Interest and Interest for Liquidity Notes	0.00
f) (iii) Net payment to the Derivative Counterparty (DC) including Break Cost if the DC is not the Defaulting Party	66,966.28
g) Unpaid Interest and Interest for Class B Notes	377,270.40
h) Reimbursement of outstanding Liquidity Reserve Draw from previous periods	0.00
i) Reimbursement of outstanding Principal Draw and Accrual Amount	763,219.10
j) Reimbursement of liquidation losses and carry-over liquidation losses	0.00
k) Unpaid Interest and Interest for Class T Notes	2,714.91
l) Reimbursement of outstanding Spread Reserve Draw from previous periods	0.00
m) Tax Shortfall	0.00
n) Tax Amount	0.00
o) Break Costs under Derivative Contract where Derivative Counterparty is the Defaulting Party	0.00
p) Amounts (non-principal) due to any other Secured Creditor	0.00
q) All Class T Interest previously capitalised, after Termination Date	0.00
r) (i) 60% of Surplus to Participation Unitholder A	108,038.21
r) (ii) 40% of Surplus to Participation Unitholder B	72,025.48

H. Distribution of Principal Repayment Fund - Clause 1.12 of Supplementary Terms Notice

Amount available for Distribution	5,887,019.39
a) Principal Draw	209,719.10
b) Repayment of Further Advances and Redraws	0.00
c) Principal payment to Liquidity Noteholders	0.00
d) If Pro_Rata test is satisfied, pari passu payments towards reducing Class A, AB and B notes outstanding balance to zero	0.00
e) Principal payment to Class A Noteholders	5,677,235.20
f) Principal payment to Class B Noteholders	0.00
g) Principal payment to Class T Noteholders	0.00
h) Amount upto in aggregate to the subscription proceeds of the residual unit	0.00
i) (i) 50% of Surplus to Participation Unitholder A	0.00
i) (ii) 50% of Surplus to Participation Unitholder B	0.00