

**INDEX**

Page

Collateral Pool Information	2-9
Summary Data	2
Distribution by Original Loan Balance	3
Distribution by Original LVR	3
Distribution by Current Loan Balance	4
Distribution by Current LVR	4
Distribution by Seasoning	5
Distribution by Original Loan Term	5
Distribution by Remaining Term	6
Distribution by Interest Rate	7
Distribution by Repayment Types	7
Distribution by Interest Types	7
Distribution by Mortgage Insurer	8
Distribution by Metro/Non-Metro	8
Distribution by Property Location	9
Distribution of Arrears	9
Distribution by Original Occupancy Status	9
Note Information and Waterfall	10



Portfolio Data as of **30-Jun-09**

SUMMARY DATA

Aggregate Principal Balance	143,060,911.13
Number of Loans	400

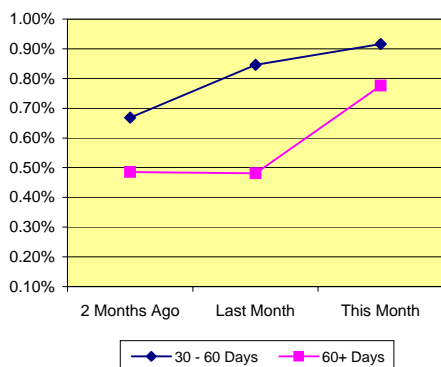
	Range		Average	Median
Principal Balance (A\$)	-33,745.03	- 1,949,570.06	359,803.97	322,193.96
Interest Rate	4.90%	- 10.64%	7.57% *	
Remaining Term (Months)	330.74	- 344.09	338.29	338.63
Original Balance (A\$)	13,573.60	- 1,961,265.68	384,474.60	340,000.00
Original Term (Months)	360.00	- 360.00	360.00	360.00
Current LVR	0.00%	- 100.36%	78.09% *	
Seasoning (Months)	15.91	- 29.26	21.71	21.37

* Weighted Average

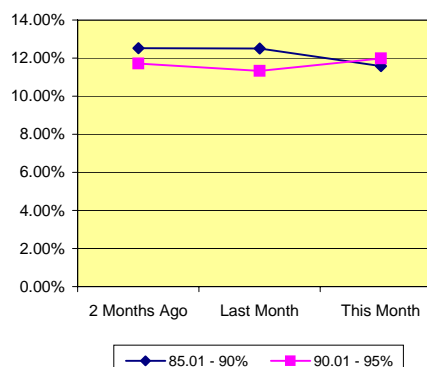
Delinquency Status	Balance (A\$)	Percentage of Pool		
	This Month	2 Months Ago	Last Month	This Month
30 - 60 Days	1,310,161.84	0.67%	0.85%	0.92%
60+ Days	1,110,826.14	0.49%	0.48%	0.78%

High LVR Loans	Balance (A\$)	Percentage of Pool		
	This Month	2 Months Ago	Last Month	This Month
Current LVR				
80.01 - 85%	17,887,794.57	12.02%	12.48%	12.50%
85.01 - 90%	16,564,417.29	12.51%	12.51%	11.58%
90.01 - 95%	17,144,388.32	11.71%	11.33%	11.98%
95.01 - 100%	14,183,964.55	10.36%	10.16%	9.91%

% of Delinquent Loans



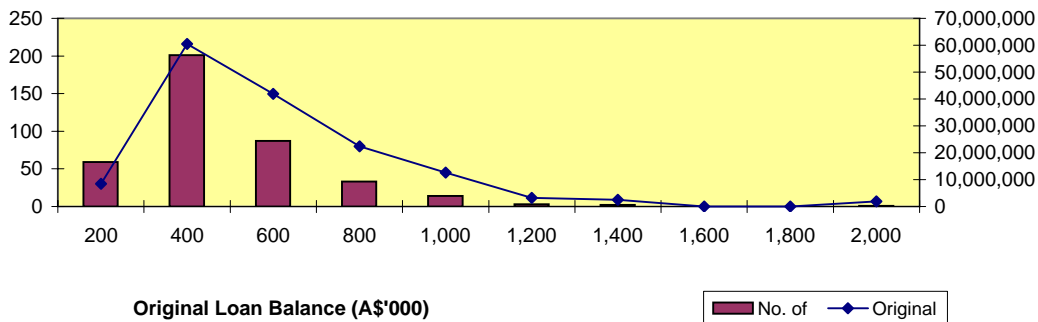
% of High LVR Loans



Distribution by Original Loan Balance

Loan Balance (A\$)	No. of Loans (LM*)	Original Balance (LM)	% (LM)	No. of Loans	Original Balance	%
0.01 - 200,000.00	60	8,665,440.86	5.42%	59	8,497,440.86	5.53%
200,000.01 - 400,000.00	205	61,725,076.92	38.61%	201	60,524,136.96	39.42%
400,000.01 - 600,000.00	90	43,406,500.29	27.15%	87	41,901,113.19	27.29%
600,000.01 - 800,000.00	35	23,826,745.49	14.90%	33	22,368,108.50	14.57%
800,000.01 - 1,000,000.00	15	13,552,724.08	8.48%	14	12,603,776.78	8.21%
1,000,000.01 - 1,200,000.00	4	4,224,339.25	2.64%	3	3,184,339.25	2.07%
1,200,000.01 - 1,400,000.00	2	2,500,181.81	1.56%	2	2,500,181.81	1.63%
1,400,000.01 - 1,600,000.00	-	-	0.00%	-	-	0.00%
1,600,000.01 - 1,800,000.00	-	-	0.00%	-	-	0.00%
1,800,000.01 - 2,000,000.00	1	1,961,265.68	1.23%	1	1,961,265.68	1.28%
	412	159,862,274.38	100.00%	400	153,540,363.03	100.00%

*Last Month



Original Loan Balance (A\$'000)

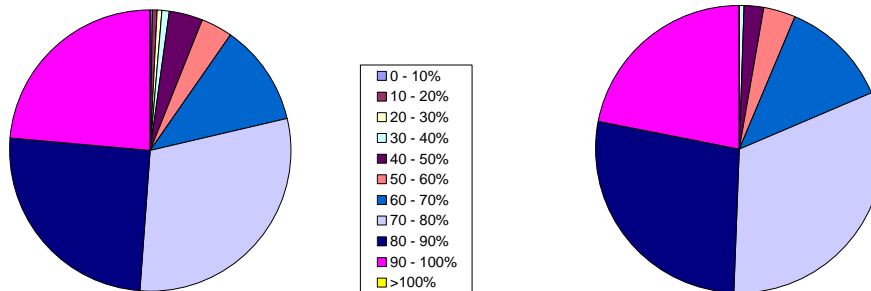
■ No. of ◆ Original

Distribution by Approval LVR

LVR Range:	No. of Loans (LM)	Current Balance (LM)	% (LM)	No. of Loans	Current Balance	%
0.01% - 10.00%	1	2,489.50	0.00%	1	2,489.50	0.00%
10.01% - 20.00%	2	99,543.46	0.07%	2	99,297.95	0.07%
20.01% - 30.00%	2	5,945.68	0.00%	2	19,557.09	-0.01%
30.01% - 40.00%	4	805,913.16	0.55%	4	795,932.53	0.56%
40.01% - 50.00%	15	3,226,212.54	2.18%	15	3,219,161.25	2.25%
50.01% - 60.00%	15	4,823,141.70	3.27%	15	4,848,868.75	3.39%
60.01% - 70.00%	49	17,787,990.64	12.05%	47	17,546,039.08	12.26%
70.01% - 80.00%	123	48,257,308.10	32.68%	118	45,800,004.69	32.01%
80.01% - 90.00%	106	41,102,768.19	27.84%	102	39,430,675.79	27.56%
90.01% - 100.00%	95	31,554,306.06	21.37%	94	31,337,998.68	21.91%
> 100.00%	-	-	0.00%	-	-	0.00%
	412	147,653,727.67	100.00%	400	143,060,911.13	100.00%

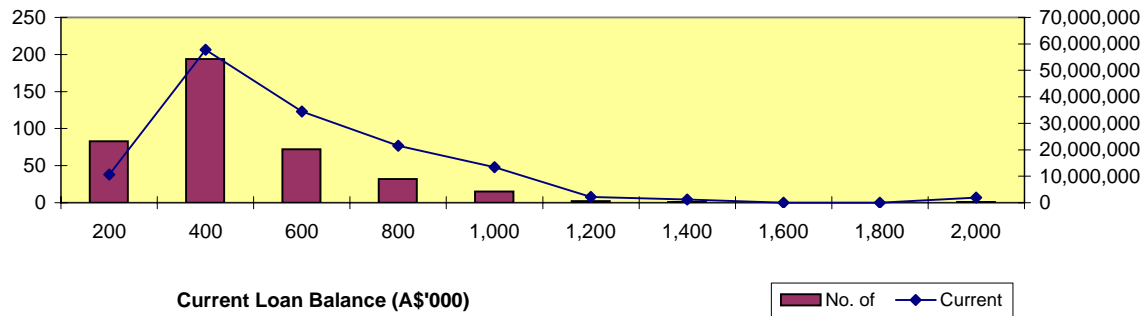
Number of Loans

Balance Outstanding



Distribution by Current Loan Balance

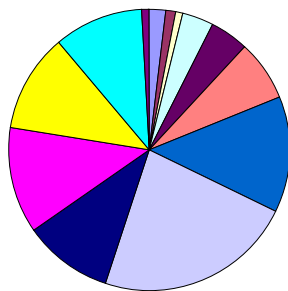
Loan Balance (A\$)	No. of Loans (LM)	Current Balance (LM)	% (LM)	No. of Loans	Current Balance	%
- 100,000.00 - 200,000.00	85	10,703,808.20	7.25%	83	10,648,919.90	7.44%
200,000.01 - 400,000.00	200	59,447,735.27	40.26%	194	57,787,001.75	40.39%
400,000.01 - 600,000.00	75	36,030,552.20	24.40%	72	34,447,716.96	24.08%
600,000.01 - 800,000.00	31	20,861,508.21	14.13%	32	21,487,068.31	15.02%
800,000.01 - 1,000,000.00	17	15,277,818.75	10.35%	15	13,360,537.29	9.34%
1,000,000.01 - 1,200,000.00	2	2,173,342.88	1.47%	2	2,173,342.88	1.52%
1,200,000.01 - 1,400,000.00	1	1,206,753.98	0.82%	1	1,206,753.98	0.84%
1,400,000.01 - 1,600,000.00	-	-	0.00%	-	0.00	0.00%
1,600,000.01 - 1,800,000.00	-	-	0.00%	-	0.00	0.00%
1,800,000.01 - 2,000,000.00	1	1,952,208.18	1.32%	1	1,949,570.06	1.36%
	412	147,653,727.67	100.00%	400	143,060,911.13	100.00%



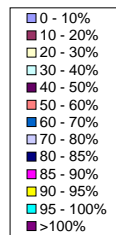
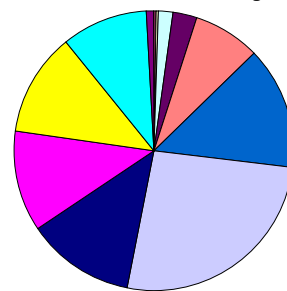
Distribution by Current LVR

LVR Range:	No. of Loans (LM)	Current Balance (LM)	% (LM)	No. of Loans	Current Balance	%
0.01% - 10.00%	9	50,209.30	0.03%	8	47,343.75	0.03%
10.01% - 20.00%	5	430,629.23	0.29%	4	215,106.81	0.15%
20.01% - 30.00%	3	505,951.01	0.34%	4	595,801.43	0.42%
30.01% - 40.00%	16	2,665,181.52	1.81%	14	2,431,632.06	1.70%
40.01% - 50.00%	18	3,967,320.06	2.69%	18	3,865,505.28	2.70%
50.01% - 60.00%	27	8,535,197.87	5.78%	27	11,148,447.20	7.79%
60.01% - 70.00%	56	23,391,731.28	15.84%	54	20,220,029.81	14.13%
70.01% - 80.00%	93	39,037,321.87	26.44%	91	37,498,753.16	26.21%
80.01% - 85.00%	43	18,421,187.06	12.48%	41	17,887,794.57	12.50%
85.01% - 90.00%	52	18,466,814.53	12.51%	49	16,564,417.29	11.58%
90.01% - 95.00%	46	16,735,993.62	11.33%	46	17,144,388.32	11.98%
95.01% - 100.00%	43	15,004,520.70	10.16%	41	14,183,964.55	9.91%
100.00% - 101.00%	1	441,669.62	0.30%	3	1,257,726.90	0.88%
	412	147,653,727.67	100.00%	400	143,060,911.13	100.00%

Number of Loans



Balance Outstanding



Distribution by Seasoning

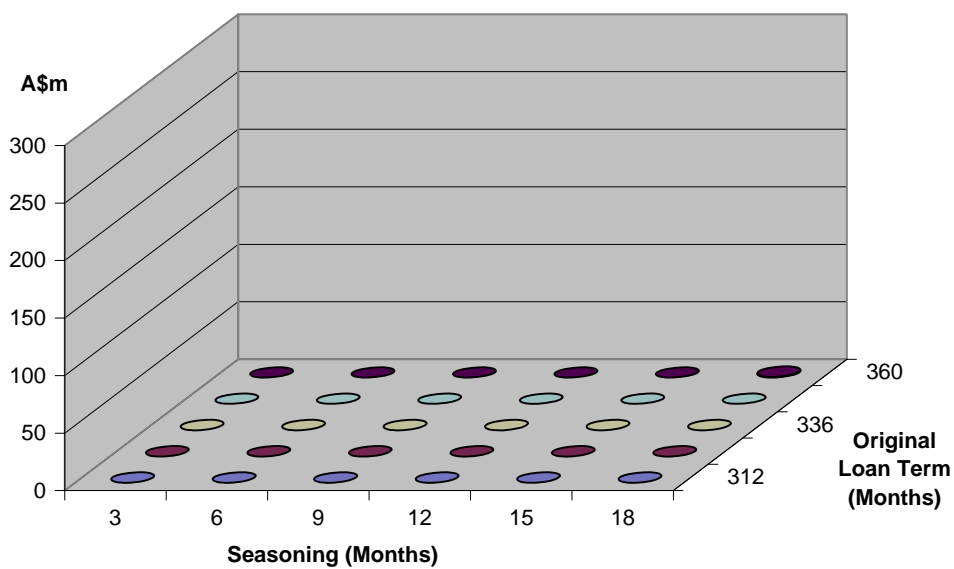
Seasoning (Months)	No. of Loans (LM)	Current Balance (LM)	% (LM)	No. of Loans	Current Balance	%
0 - 3	-	-	0.00%	-	0.00	0.00%
4 - 6	-	-	0.00%	-	0.00	0.00%
7 - 9	-	-	0.00%	-	0.00	0.00%
10 - 12	-	-	0.00%	-	0.00	0.00%
13 - 15	1	308,737.46	0.21%	-	0.00	0.00%
16 - 18	1	296,067.00	0.20%	2	604,804.46	0.42%
19 - 21	266	93,905,347.07	63.60%	169	61,096,442.69	42.71%
22 - 24	121	42,714,609.71	29.86%	190	67,042,074.91	46.86%
25 - 27	21	8,271,611.21	5.78%	35	11,140,328.56	7.79%
28 - 30	2	2,157,355.22	1.51%	4	3,177,260.51	2.22%
	412	147,653,727.67	101.16%	400	143,060,911.13	100.00%

Distribution by Original Loan Term

Original Loan Term (Months)	No. of Loans (LM)	Current Balance (LM)	% (LM)	No. of Loans	Current Balance	%
0 - 303	-	-	0.00%	-	0.00	0.00%
304 - 306	-	-	0.00%	-	-	0.00%
307 - 309	-	-	0.00%	-	-	0.00%
310 - 312	-	-	0.00%	-	-	0.00%
313 - 315	-	-	0.00%	-	-	0.00%
316 - 318	-	-	0.00%	-	-	0.00%
319 - 321	-	-	0.00%	-	-	0.00%
322 - 324	-	-	0.00%	-	-	0.00%
325 - 327	-	-	0.00%	-	-	0.00%
328 - 330	-	-	0.00%	-	-	0.00%
331 - 333	-	-	0.00%	-	-	0.00%
334 - 336	-	-	0.00%	-	-	0.00%
337 - 339	-	-	0.00%	-	-	0.00%
340 - 342	-	-	0.00%	-	-	0.00%
343 - 345	-	-	0.00%	-	-	0.00%
346 - 348	-	-	0.00%	-	-	0.00%
349 - 351	-	-	0.00%	-	-	0.00%
352 - 354	-	-	0.00%	-	-	0.00%
355 - 357	-	-	0.00%	-	-	0.00%
358 - 360	412	147,653,727.67	100.00%	400	143,060,911.13	100.00%
	412	147,653,727.67	100.00%	400	143,060,911.13	100.00%

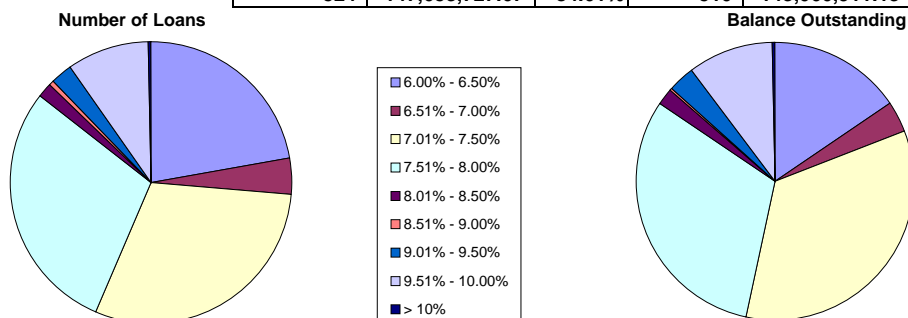
Distribution by Remaining Term:

Remaining Term (Months)	No. of Loans (LM)	Current Balance (LM)	% (LM)	No. of Loans	Current Balance	%
0 - 303	-	-	0.00%	-	-	0.00%
304 - 306	-	-	0.00%	-	-	0.00%
307 - 309	-	-	0.00%	-	-	0.00%
310 - 312	-	-	0.00%	-	-	0.00%
313 - 315	-	-	0.00%	-	-	0.00%
316 - 318	-	-	0.00%	-	-	0.00%
319 - 321	-	-	0.00%	-	-	0.00%
322 - 324	-	-	0.00%	-	-	0.00%
325 - 327	-	-	0.00%	-	-	0.00%
328 - 330	-	-	0.00%	-	-	0.00%
331 - 333	2	2,157,355.22	1.46%	4	3,177,260.51	2.22%
334 - 336	21	8,614,174.06	5.83%	35	11,441,759.53	8.00%
337 - 339	121	42,358,463.62	28.69%	190	66,727,064.33	46.64%
340 - 342	266	93,736,529.17	63.48%	169	60,927,624.79	42.59%
343 - 345	1	478,468.14	0.32%	2	787,201.97	0.55%
346 - 348	1	308,737.46	0.21%	-	-	0.00%
349 - 351	-	-	0.00%	-	-	0.00%
352 - 354	-	-	0.00%	-	-	0.00%
355 - 357	-	-	0.00%	-	-	0.00%
358 - 360	-	-	0.00%	-	-	0.00%
412	147,653,727.67	100.00%	400	143,060,911.13	100.00%	



Distribution by Interest Rate

Interest Rate	No. of Loans (LM)	Current Balance (LM)	% (LM)	No. of Loans	Current Balance	%
6.00% - 6.50%	114	22,731,203.64	0.00%	114	22,373,054.18	15.64%
6.51% - 7.00%	21	6,025,859.09	4.08%	20	5,091,665.08	3.56%
7.01% - 7.50%	155	49,108,114.11	33.26%	153	48,732,981.90	34.06%
7.51% - 8.00%	152	45,059,572.55	30.52%	149	44,467,240.35	31.08%
8.01% - 8.50%	11	3,619,595.92	2.45%	9	2,949,123.93	2.06%
8.51% - 9.00%	2	414,689.53	0.28%	2	414,419.47	0.29%
9.01% - 9.50%	15	4,507,343.44	3.05%	14	4,258,697.00	2.98%
9.51% - 10.00%	52	15,732,507.47	10.66%	47	14,310,314.86	10.00%
> 10%	2	454,841.92	0.31%	2	463,414.36	0.32%
	524	147,653,727.67	84.61%	510	143,060,911.13	100.00%

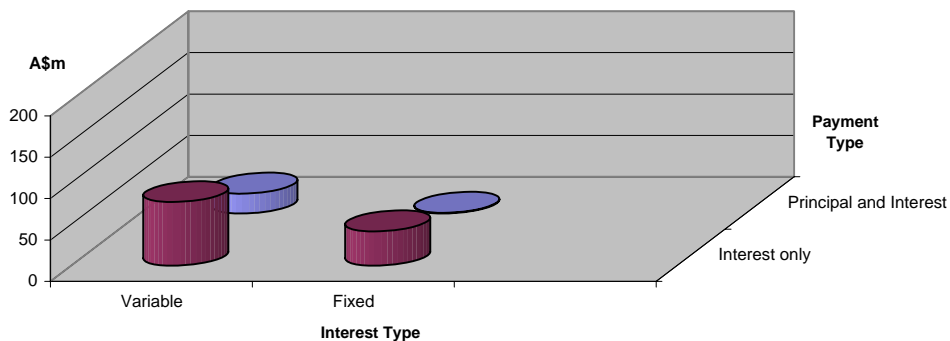


Distribution by Repayment Types:

Repayment Types	No. of Loans (LM)	Current Balance (LM)	% (LM)	No. of Loans	Current Balance	%
Principal and Interest	104	25,831,819.62	17.49%	100	24,782,593.51	17.32%
Interest only	420	121,821,908.05	82.51%	410	118,278,317.62	82.68%
	524	147,653,727.67	100.00%	510	143,060,911.13	100.00%

Distribution by Interest Types:

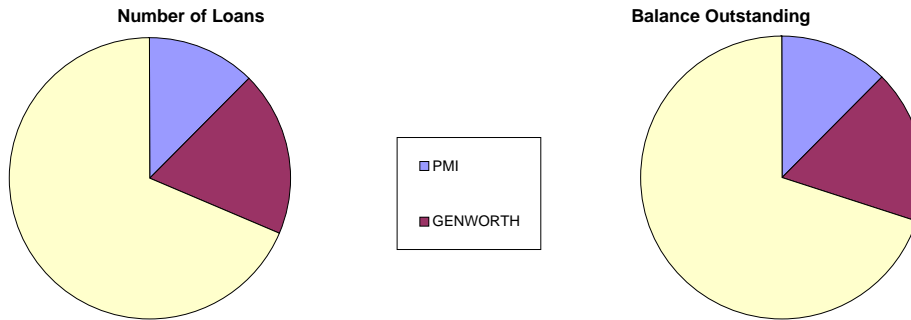
Repayment Types	No. of Loans (LM)	Current Balance (LM)	% (LM)	No. of Loans	Current Balance	%
Variable	396	105,434,165.64	71.41%	382	100,762,375.00	70.43%
Fixed	128	42,219,562.03	28.59%	128	42,298,536.13	29.57%
	524	147,653,727.67	100.00%	510	143,060,911.13	100.00%





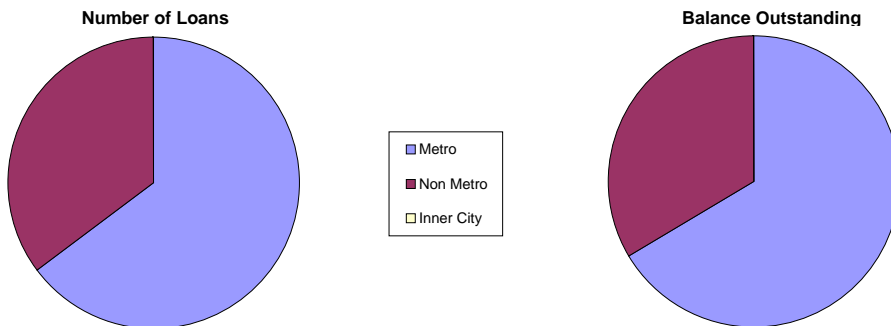
Distribution by Mortgage Insurer

Mortgage Insurer	No. of Loans (LM)	Current Balance (LM)	% (LM)	No. of Loans	Current Balance	%
PMI	51	18,332,487.29	12.42%	50	17,779,110	12.43%
GENWORTH	76	25,160,560.15	17.04%	75	24,993,972	17.47%
MGIC	285	104,160,680.23	70.54%	275	100,287,830	70.10%
	412	147,653,727.67	100.00%	400	143,060,911.13	100.00%



Distribution by Metro/Non-Metro

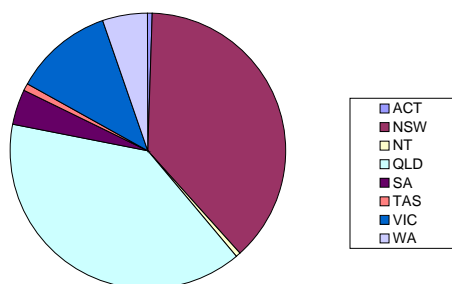
Original Occupancy Status	No. of securities (LM)	Current Balance (LM)	% (LM)	No. of securities	Current Balance	%
Metro	302	98,964,134.47	67.02%	293	94,871,032.88	66.32%
Non Metro	162	48,689,593.20	32.98%	160	48,189,878.25	33.68%
Inner City	-	-	0.00%	-	-	0.00%
	464	147,653,727.67	100.00%	453	143,060,911.13	100.00%



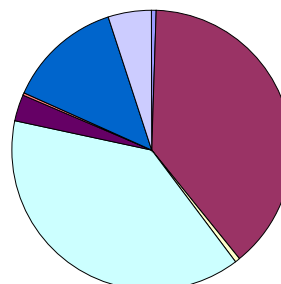
Distribution by Property Location

Property Location	No. of securities (LM)	Current Balance (LM)	% (LM)	No. of securities	Current Balance	%
ACT	4	1,229,049.78	0.83%	3	832,803.74	0.58%
NSW	174	56,381,776.23	38.19%	171	55,235,997.58	38.61%
NT	2	574,544.21	0.39%	2	575,134.02	0.40%
QLD	181	57,306,427.24	38.81%	177	55,295,682.14	38.65%
SA	20	4,485,933.70	3.04%	20	4,553,532.44	3.18%
TAS	3	408,556.65	0.28%	3	408,017.51	0.29%
VIC	54	20,058,171.50	13.58%	53	19,064,224.90	13.33%
WA	26	7,209,268.36	4.88%	24	7,095,518.80	4.96%
	464	147,653,727.67	100.00%	453	143,060,911.13	100.00%

Number of Loans



Balance Outstanding



Distribution of Arrears

Days in Arrears	No. of Loans (LM)	Current Balance (LM)	% (LM)	No. of Loans	Current Balance	%
0	509	139,743,555	94.64%	493	135,605,964.55	94.79%
1 - 30	11	5,951,718	4.03%	12	5,033,958.60	3.52%
31 - 60	2	1,248,566	0.85%	2	1,310,161.84	0.92%
61 - 90	2	709,889	0.48%	2	726,983.59	0.51%
>90	-	-	0.00%	1	383,842.55	0.27%
	524	147,653,727.67	100.00%	510	143,060,911.13	100.00%

Distribution by Product Type

Product Type	No. of Loans (LM)	Current Balance (LM)	% (LM)	No. of Loans	Current Balance	%
Full Documentation	227	75,797,882.35	51.33%	225	74,342,006.62	51.97%
Low Documentation	115	49,763,302.09	33.70%	109	47,772,919.71	33.39%
No Documentation	70	22,092,543.23	14.96%	66	20,945,984.80	14.64%
	412	147,653,727.67	100.00%	400	143,060,911.13	100.00%

Nautilus Trust No. 1 Series 2008-1

July 6, 2009

Monthly Waterfall Calculation Report

Collection Period (start)	June	01, 2009
Collection Period (end)	June	30, 2009
Actual number of days in the Collection Period		30
Payment Period (start)	June	04, 2009
Payment Period (end)	July	06, 2009
Actual number of days in the Payment Period		32
BBSW		3.23170 %

Receivables reconciliation

Outstanding Balance of Receivables as at the start of preceding collection period	147,653,727.67
Add:Fees charges	104,694.62
Add:Interest Charges	946,941.49
Add:Redraws and Further Advances paid during the period	1,150,233.02
Less:Repayments	6,794,685.67
Outstanding Balance of Receivables as at end of preceding collection period	143,060,911.13

A. OUTSTANDING NOTE ANALYSIS

Class A Notes

Number of Outstanding Notes	14,560
Margin for the Notes	2.35000 %
Interest Rate for the Notes	5.58170 %
Interest Accrued (i.e. due on next Payment Date)	437,528.00
Interest to be paid on next Payment Date	437,528.00
Unpaid Interest Carry Forward	0.00

Opening Invested Amount	89,410,339.20
Opening Stated Amount	89,410,339.20
Principal Repayments to be made on next Payment Date	4,466,425.60
Charge Offs to be made on next Payment Date	0.00
Charge Offs to be reimbursed on next Payment Date	0.00
Carry over Charge Offs as of next Payment Date	0.00
Closing Invested Amount	84,943,913.60
Closing Stated Amount	84,943,913.60

Opening Principal Factor	0.61408200
Principal Paid Factor	0.03067600
Interest Paid Factor	0.00300500
Closing Principal Factor	0.58340600

Class B Notes

Number of Outstanding Notes	6,240
Margin for the Notes	3.40000 %
Interest Rate for the Notes	6.63170 %
Interest Accrued (i.e. due on next Payment Date)	356,116.80
Interest to be paid on next Payment Date	356,116.80

Nautilus Trust No. 1 Series 2008-1

July 6, 2009

Unpaid Interest Carry Forward	0.00
Opening Invested Amount	61,245,872.04
Opening Stated Amount	61,245,872.04
Principal Repayments to be made on next Payment Date	62,770.86
Charge Offs to be made on next Payment Date	0.00
Charge Offs to be reimbursed on next Payment Date	0.00
Carry over Charge Offs as of next Payment Date	0.00
Closing Invested Amount	61,183,101.18
Closing Stated Amount	61,183,101.18
Opening Principal Factor	0.98150436
Principal Paid Factor	0.00100594
Interest Paid Factor	0.00570700
Closing Principal Factor	0.98049842
<u>Class T Notes</u>	
Number of Outstanding Notes	0
Margin for the Notes	0.00000 %
Interest Rate for the Notes	3.23170 %
Interest Accrued (i.e. due on next Payment Date)	3,269.96
Interest to be paid on next Payment Date	3,269.96
Unpaid Interest Capitalised	0.00
Opening Amount	1,154,127.96
Amount Issued During Period	62,770.86
Opening Stated Amount	1,154,127.96
Principal Repayments to be made on next Payment Date	0.00
Charge Offs to be made on next Payment Date	0.00
Charge Offs to be reimbursed on next Payment Date	0.00
Carry over Charge Offs as of next Payment Date	0.00
Closing Invested Amount	1,216,898.82
Closing Stated Amount	1,216,898.82
<u>Liquidity Notes</u>	
Number of Outstanding Notes	0
Margin for the Notes	0.00000 %
Interest Rate for the Notes	3.23170 %
Interest Accrued (i.e. due on next Payment Date)	0.00
Interest to be paid on next Payment Date	0.00
Unpaid Interest Carry Forward	0.00
Opening Invested Amount	0.00
Opening Stated Amount	0.00
Principal Repayments to be made on next Payment Date	0.00
Charge Offs to be made on next Payment Date	0.00
Charge Offs to be reimbursed on next Payment Date	0.00
Carry over Charge Offs as of next Payment Date	0.00
Closing Invested Amount	0.00
Closing Stated Amount	0.00

Nautilus Trust No. 1 Series 2008-1

July 6, 2009

Opening Principal Factor	0.00000000
Principal Paid Factor	0.00000000
Interest Paid Factor	0.00000000
Closing Principal Factor	0.00000000

B. LIQUIDITY RESERVE

Liquidity Reserve Required amount	748,800.00
Opening Balance	748,800.00
Less: Liquidity Reserve Draw towards Total Available Income	0.00
Less: Excess towards Total Available Income	0.00
Reimbursement of Liquidity Reserve Draw previously unreimbursed	0.00
Closing Balance	748,800.00

C. SPREAD RESERVE

Opening Balance	883,000.00
Floor Amount	150,000.00
Spread Reserve Required amount	883,000.00
Required Spread Reserve Draw	0.00
Available Spread Reserve Draw	733,000.00
Less: Actual Spread Reserve Draw towards Total Available Income	0.00
Less: Excess towards Total Available Income	0.00
Reimbursement of Spread Reserve Draw previously unreimbursed	0.00
Top up of Spread Reserve to next periods required reserve balance	0.00
Closing Balance	883,000.00

D. UNREIMBURSED PRINCIPAL DRAW

Opening Balance	663,978.91
Principal Draw from Current Period (Accruals for Collection Period)	493,542.72
Principal Draw from Current Period (Accruals between Determination Date and Payment Date)	148,366.75
Principal Draw from Current Period (Liquidity Shortfall)	0.00
Reimbursement of Principal Draw	663,978.91
Closing Balance	641,909.47

E. MGIC RESERVE

MGIC Reserve Required amount	3,800,000.00
Opening Balance	3,800,000.00
Less: MGIC Reserve Draw towards Total Available Income	0.00
Less: Excess towards repaying Outstanding MGIC Loan	0.00
Closing Balance	3,800,000.00

Nautilus Trust No. 1 Series 2008-1

July 6, 2009

F. AVAILABLE CASH

Collections for Preceding Collection Period	6,794,685.67
Less: Interest Posted during the collection period	946,941.49
Less: Borrower Exit Fees in the nature of Income	0.00
Less: Accrual Amount for the Collection Period	493,542.72
Less: Shortfall Adjustment calculated on the preceding Determination Date	0.00
Less: Principal component of Collection Period Distributions	1,150,233.02
Redraws distributed during the collection period	1,150,233.02
Principal component of Timely Payment Cover to the Mortgage Insurer	0.00
PRINCIPAL COLLECTIONS	4,592,816.54
Principal Collections	4,592,816.54
Reimbursement of Principal Draw	3,269.96
Reimbursement of Charge offs and Carryover Charge offs	0.00
Less: Principal Draw	641,909.47
PRINCIPAL REPAYMENT FUND	4,614,885.98
Undistributed amount from previous period	11.79
TOTAL AVAILABLE PRINCIPAL FOR DISTRIBUTION	4,614,897.77
Shortfall Adjustment applicable next period	0.00
Required Payments	936,535.00
Collections	6,794,685.67
Less: Collection Period Distributions	1,150,233.02
Redraws distributed during the collection period	1,150,233.02
Timely Payment Cover to the Mortgage Insurer	0.00
Break Costs paid during collection Period	0.00
Less: Principal Collections	4,592,816.54
Other Income	14,856.39
Net payments to be received under the Derivatives Contracts	0.00
INTEREST COLLECTIONS	1,066,492.50
Interest Collections	1,066,492.50
Principal Draw	641,909.47
Liquidity Reserve Draw	0.00
Excess Liquidity Reserve	0.00
Spread Reserve Draw	0.00
MGIC Reserve Draw	0.00
TOTAL INTEREST COLLECTIONS	1,708,401.97
Undistributed amount from previous period	0.00
TOTAL AVAILABLE INCOME FOR DISTRIBUTION	1,708,401.97

Nautilus Trust No. 1 Series 2008-1

July 6, 2009

G. Distribution of Total Interest Collections - Clause 1.10 of Supplementary Terms Notice

Amount available for Distribution	1,708,401.97
a) \$100 to the Participation Unitholders	100.00
b) Taxes	0.00
c) Fees and expenses to Trustee, Security Trustee, Custodian and Standby-Servicer	6,067.73
d) Other Series Expenses	195.17
e) (i) Fees and expenses to Manager	25,455.47
e) (ii) Fees and expenses to the Servicer	27,593.12
f) (i) Unpaid Interest and Interest for Class A Notes	437,528.00
f) (ii) Unpaid Interest and Interest for Liquidity Notes	0.00
f) (iii) Net payment to the Derivative Counterparty (DC) including Break Cost if the DC is not the Defaulting Party	83,478.71
g) Unpaid Interest and Interest for Class B Notes	356,116.80
h) Reimbursement of outstanding Liquidity Reserve Draw from previous periods	0.00
i) Reimbursement of outstanding Principal Draw and Accrual Amount	663,978.91
j) Reimbursement of liquidation losses and carry-over liquidation losses	0.00
k) Unpaid Interest and Interest for Class T Notes	3,269.96
l) Reimbursement of outstanding Spread Reserve Draw from previous periods	0.00
m) Tax Shortfall	0.00
n) Tax Amount	0.00
o) Break Costs under Derivative Contract where Derivative Counterparty is the Defaulting Party	0.00
p) Amounts (non-principal) due to any other Secured Creditor	0.00
q) All Class T Interest previously capitalised, after Termination Date	0.00
r) (i) 60% of Surplus to Participation Unitholder A	62,770.86
r) (ii) 40% of Surplus to Participation Unitholder B	41,847.24

H. Distribution of Principal Repayment Fund - Clause 1.12 of Supplementary Terms Notice

Amount available for Distribution	4,614,897.77
a) Principal Draw	148,366.75
b) Repayment of Further Advances and Redraws	0.00
c) Principal payment to Liquidity Noteholders	0.00
d) If Pro_Rata test is satisfied, pari passu payments towards reducing Class A, AB and B notes outstanding balance to zero	0.00
e) Principal payment to Class A Noteholders	4,466,425.60
f) Principal payment to Class B Noteholders	0.00
g) Principal payment to Class T Noteholders	0.00
h) Amount upto in aggregate to the subscription proceeds of the residual unit	0.00
i) (i) 50% of Surplus to Participation Unitholder A	0.00
i) (ii) 50% of Surplus to Participation Unitholder B	0.00