

**INDEX**

Page

Collateral Pool Information	2-9
Summary Data	2
Distribution by Original Loan Balance	3
Distribution by Original LVR	3
Distribution by Current Loan Balance	4
Distribution by Current LVR	4
Distribution by Seasoning	5
Distribution by Original Loan Term	5
Distribution by Remaining Term	6
Distribution by Interest Rate	7
Distribution by Repayment Types	7
Distribution by Interest Types	7
Distribution by Mortgage Insurer	8
Distribution by Metro/Non-Metro	8
Distribution by Property Location	9
Distribution of Arrears	9
Distribution by Original Occupancy Status	9
Note Information and Waterfall	10



Portfolio Data as of **28-Feb-09**

SUMMARY DATA

Aggregate Principal Balance	161,519,611.62
Number of Loans	448

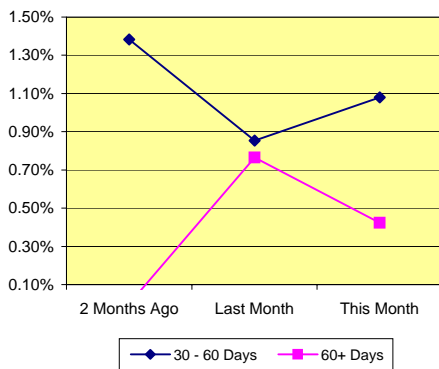
	Range		Average	Median
Principal Balance (A\$)	-15,870.62	- 1,960,468.66	359,803.97	322,193.96
Interest Rate	6.05%	- 10.64%	8.25% *	
Remaining Term (Months)	334.75	- 348.10	342.28	342.64
Original Balance (A\$)	13,573.60	- 1,961,265.68	384,474.60	340,000.00
Original Term (Months)	360.00	- 360.00	360.00	360.00
Current LVR	0.00%	- 100.01%	77.95% *	
Seasoning (Months)	11.90	- 25.25	17.72	17.36

* Weighted Average

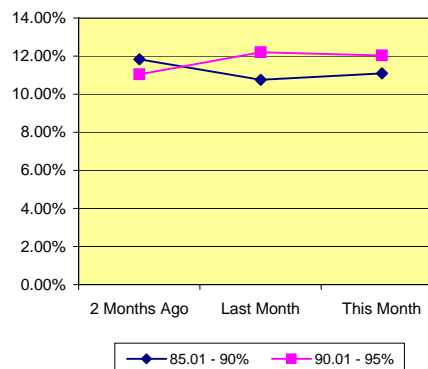
Delinquency Status	Balance (A\$)	Percentage of Pool		
	This Month	2 Months Ago	Last Month	This Month
30 - 60 Days	1,744,025.56	1.38%	0.85%	1.08%
60+ Days	683,124.85	0.00%	0.76%	0.42%

High LVR Loans	Balance (A\$)	Percentage of Pool		
	This Month	2 Months Ago	Last Month	This Month
Current LVR				
80.01 - 85%	21,085,574.02	14.04%	14.06%	13.05%
85.01 - 90%	17,907,261.42	11.84%	10.76%	11.09%
90.01 - 95%	19,425,787.69	11.04%	12.20%	12.03%
95.01 - 100%	17,475,246.18	10.08%	10.46%	10.82%

% of Delinquent Loans



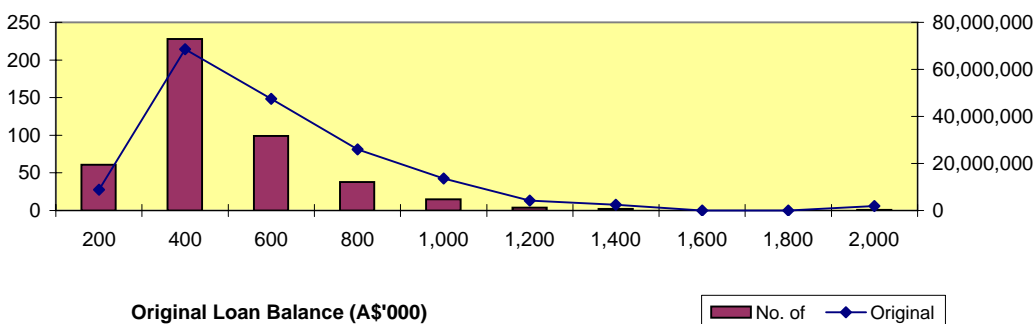
% of High LVR Loans



Distribution by Original Loan Balance

Loan Balance (A\$)	No. of Loans (LM*)	Original Balance (LM)	% (LM)	No. of Loans	Original Balance	%
0.01 - 200,000.00	63	9,139,581.03	5.10%	61	8,840,940.86	5.11%
200,000.01 - 400,000.00	233	69,996,514.37	39.04%	228	68,568,306.51	39.60%
400,000.01 - 600,000.00	105	50,436,006.65	28.13%	99	47,467,562.83	27.41%
600,000.01 - 800,000.00	40	27,476,240.35	15.33%	38	26,034,173.26	15.04%
800,000.01 - 1,000,000.00	15	13,552,724.08	7.56%	15	13,552,724.08	7.83%
1,000,000.01 - 1,200,000.00	4	4,224,339.25	2.36%	4	4,224,339.25	2.44%
1,200,000.01 - 1,400,000.00	2	2,500,181.81	1.39%	2	2,500,181.81	1.44%
1,400,000.01 - 1,600,000.00	-	-	0.00%	-	-	0.00%
1,600,000.01 - 1,800,000.00	-	-	0.00%	-	-	0.00%
1,800,000.01 - 2,000,000.00	1	1,961,265.68	1.09%	1	1,961,265.68	1.13%
	463	179,286,853.22	100.00%	448	173,149,494.28	100.00%

*Last Month

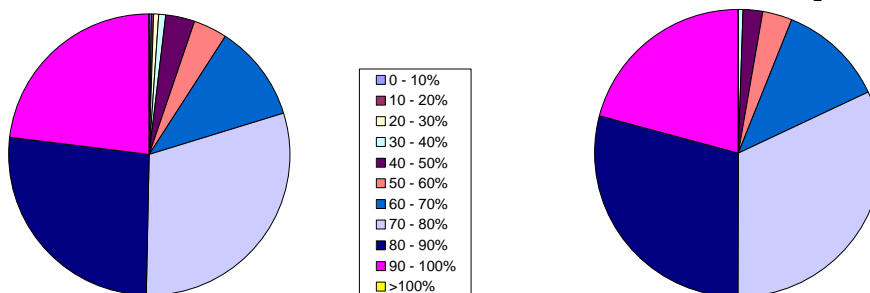


Distribution by Approval LVR

LVR Range:	No. of Loans (LM)	Current Balance (LM)	% (LM)	No. of Loans	Current Balance	%
0.01% - 10.00%	1	2,489.50	0.00%	1	2,489.50	0.00%
10.01% - 20.00%	2	99,571.22	0.06%	2	99,393.34	0.06%
20.01% - 30.00%	2	8,372.29	0.01%	2	13,119.18	0.01%
30.01% - 40.00%	4	839,877.29	0.50%	4	834,075.00	0.52%
40.01% - 50.00%	15	3,513,263.35	2.10%	15	3,507,790.15	2.17%
50.01% - 60.00%	17	5,515,492.53	3.30%	17	5,494,403.81	3.40%
60.01% - 70.00%	52	20,237,720.08	12.11%	50	19,303,103.63	11.95%
70.01% - 80.00%	137	52,629,536.55	31.50%	134	51,461,597.87	31.86%
80.01% - 90.00%	129	49,835,386.92	29.83%	120	47,336,291.50	29.31%
90.01% - 100.00%	104	34,396,920.68	20.59%	103	33,467,347.64	20.72%
> 100.00%	-	-	0.00%	-	-	0.00%
	463	167,078,630.41	100.00%	448	161,519,611.62	100.00%

Number of Loans

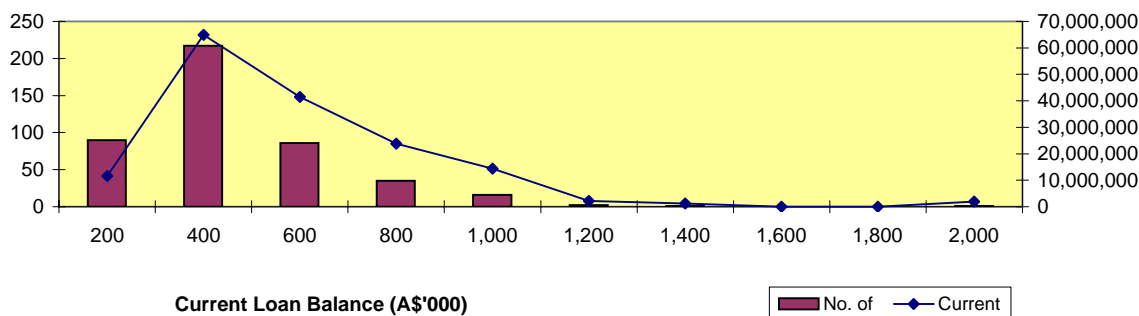
Balance Outstanding





Distribution by Current Loan Balance

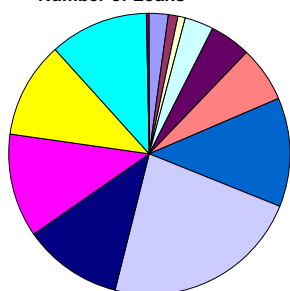
Loan Balance (A\$)	No. of Loans (LM)	Current Balance (LM)	% (LM)	No. of Loans	Current Balance	%
- 15,000.00 - 200,000.00	91	11,615,941.55	6.95%	90	11,580,946.38	7.17%
200,000.01 - 400,000.00	222	66,032,858.40	39.52%	217	64,887,139.46	40.17%
400,000.01 - 600,000.00	94	45,165,877.43	27.03%	86	41,455,890.08	25.67%
600,000.01 - 800,000.00	36	24,574,029.91	14.71%	35	23,865,416.00	14.78%
800,000.01 - 1,000,000.00	16	14,348,560.58	8.59%	16	14,389,654.18	8.91%
1,000,000.01 - 1,200,000.00	2	2,173,342.88	1.30%	2	2,173,342.88	1.35%
1,200,000.01 - 1,400,000.00	1	1,206,753.98	0.72%	1	1,206,753.98	0.75%
1,400,000.01 - 1,600,000.00	-	-	0.00%	-	0.00	0.00%
1,600,000.01 - 1,800,000.00	-	-	0.00%	-	0.00	0.00%
1,800,000.01 - 2,000,000.00	1	1,961,265.68	1.17%	1	1,960,468.66	1.21%
	463	167,078,630.41	100.00%	448	161,519,611.62	100.00%



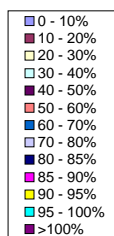
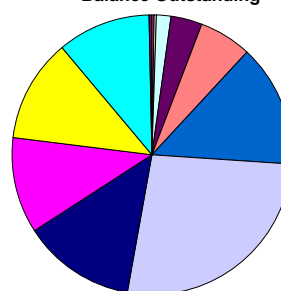
Distribution by Current LVR

LVR Range:	No. of Loans (LM)	Current Balance (LM)	% (LM)	No. of Loans	Current Balance	%
0.01% - 10.00%	15	1,212,696.73	0.73%	10	104,151.28	0.06%
10.01% - 20.00%	4	345,460.96	0.21%	5	375,343.62	0.23%
20.01% - 30.00%	3	451,067.48	0.27%	4	543,777.91	0.34%
30.01% - 40.00%	15	2,579,938.12	1.54%	14	2,517,988.02	1.56%
40.01% - 50.00%	20	5,138,135.88	3.08%	22	5,764,336.20	3.57%
50.01% - 60.00%	29	9,716,566.31	5.82%	28	9,898,591.95	6.13%
60.01% - 70.00%	58	24,260,018.28	14.52%	56	22,913,241.96	14.19%
70.01% - 80.00%	104	43,617,138.96	26.11%	102	43,083,239.15	26.67%
80.01% - 85.00%	58	23,484,302.88	14.06%	51	21,085,574.02	13.05%
85.01% - 90.00%	53	17,980,421.27	10.76%	54	17,907,261.42	11.09%
90.01% - 95.00%	52	20,391,800.78	12.20%	50	19,425,787.69	12.03%
95.01% - 100.00%	51	17,475,757.26	10.46%	51	17,475,246.18	10.82%
100.00% - 101.00%	1	425,325.50	0.25%	1	425,072.22	0.26%
	463	167,078,630.41	100.00%	448	161,519,611.62	100.00%

Number of Loans



Balance Outstanding



Distribution by Seasoning

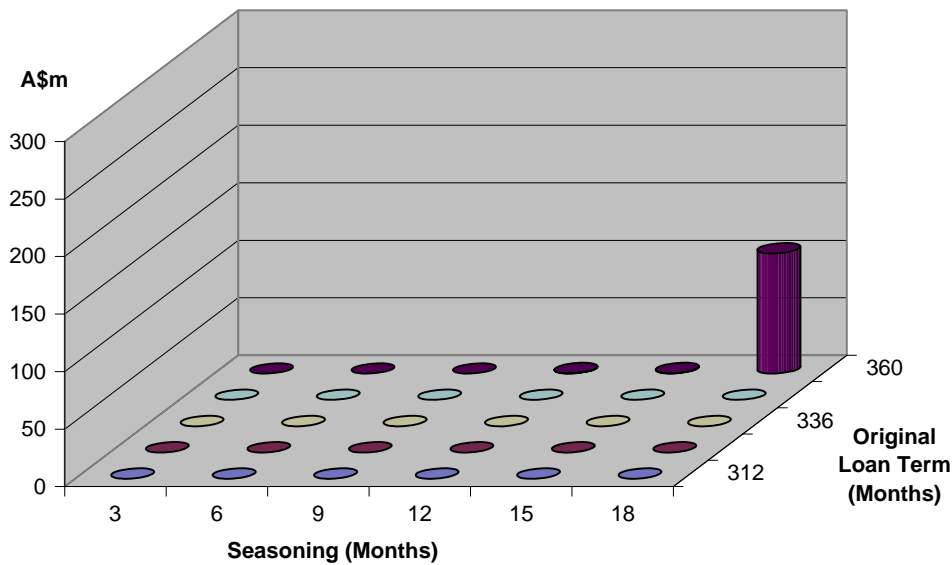
Seasoning (Months)	No. of Loans (LM)	Current Balance (LM)	% (LM)	No. of Loans	Current Balance	%
0 - 3	-	-	0.00%	-	0.00	0.00%
4 - 6	-	-	0.00%	-	0.00	0.00%
7 - 9	-	-	0.00%	-	0.00	0.00%
10 - 12	1	308,737.46	0.18%	1	308,737.46	0.19%
13 - 15	73	29,918,499.30	17.91%	1	296,067.00	0.18%
16 - 18	298	103,370,509.28	61.87%	291	104,696,940.19	64.82%
19 - 21	77	26,382,022.35	15.79%	130	44,890,183.07	27.79%
22 - 24	13	6,893,714.98	4.27%	23	9,162,068.20	5.67%
25 - 27	1	205,147.04	0.13%	2	2,165,615.70	1.34%
28 - 30	-	-	0.00%	-	0.00	0.00%
	463	167,078,630.41	100.15%	448	161,519,611.62	100.00%

Distribution by Original Loan Term

Original Loan Term (Months)	No. of Loans (LM)	Current Balance (LM)	% (LM)	No. of Loans	Current Balance	%
0 - 303	-	537,089.79	0.32%	-	0.00	0.00%
304 - 306	-	-	0.00%	-	-	0.00%
307 - 309	-	-	0.00%	-	-	0.00%
310 - 312	-	-	0.00%	-	-	0.00%
313 - 315	-	-	0.00%	-	-	0.00%
316 - 318	-	-	0.00%	-	-	0.00%
319 - 321	-	-	0.00%	-	-	0.00%
322 - 324	-	-	0.00%	-	-	0.00%
325 - 327	-	-	0.00%	-	-	0.00%
328 - 330	-	-	0.00%	-	-	0.00%
331 - 333	-	-	0.00%	-	-	0.00%
334 - 336	-	-	0.00%	-	-	0.00%
337 - 339	-	-	0.00%	-	-	0.00%
340 - 342	-	-	0.00%	-	-	0.00%
343 - 345	-	-	0.00%	-	-	0.00%
346 - 348	-	-	0.00%	-	-	0.00%
349 - 351	-	-	0.00%	-	-	0.00%
352 - 354	-	-	0.00%	-	-	0.00%
355 - 357	-	-	0.00%	-	-	0.00%
358 - 360	463	166,541,540.62	99.68%	448	161,519,611.62	100.00%
	463	167,078,630.41	100.00%	448	161,519,611.62	100.00%

Distribution by Remaining Term:

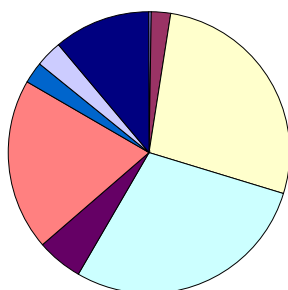
Remaining Term (Months)	No. of Loans (LM)	Current Balance (LM)	% (LM)	No. of Loans	Current Balance	%
0 - 303	-	537,089.79	0.32%	-	-	0.00%
304 - 306	-	-	0.00%	-	-	0.00%
307 - 309	-	-	0.00%	-	-	0.00%
310 - 312	-	-	0.00%	-	-	0.00%
313 - 315	-	-	0.00%	-	-	0.00%
316 - 318	-	-	0.00%	-	-	0.00%
319 - 321	-	-	0.00%	-	-	0.00%
322 - 324	-	-	0.00%	-	-	0.00%
325 - 327	-	-	0.00%	-	-	0.00%
328 - 330	-	-	0.00%	-	-	0.00%
331 - 333	-	-	0.00%	-	-	0.00%
334 - 336	1	205,147.04	0.12%	2	2,165,615.70	1.34%
337 - 339	13	6,893,714.98	4.13%	23	9,505,813.96	5.89%
340 - 342	77	26,382,022.35	15.79%	130	44,532,867.03	27.57%
343 - 345	298	102,689,306.42	61.46%	291	104,528,122.29	64.72%
346 - 348	73	29,932,049.47	17.91%	1	478,455.18	0.30%
349 - 351	1	439,300.36	0.26%	1	308,737.46	0.19%
352 - 354	-	-	0.00%	-	-	0.00%
355 - 357	-	-	0.00%	-	-	0.00%
358 - 360	-	-	0.00%	-	-	0.00%
463	167,078,630.41	100.00%	448	161,519,611.62	100.00%	



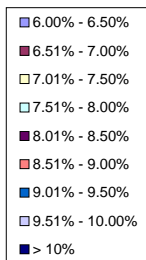
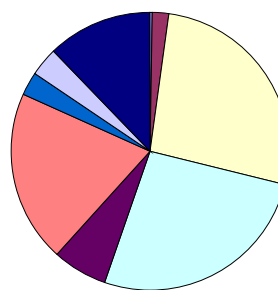
Distribution by Interest Rate

Interest Rate	No. of Loans (LM)	Current Balance (LM)	% (LM)	No. of Loans	Current Balance	%
6.00% - 6.50%	1	329,003.97	0.00%	1	328,121.88	0.20%
6.51% - 7.00%	14	3,460,902.70	2.07%	14	3,460,124.26	2.14%
7.01% - 7.50%	160	43,764,062.98	26.19%	155	43,046,573.28	26.65%
7.51% - 8.00%	165	43,262,204.81	25.89%	163	42,459,444.33	26.29%
8.01% - 8.50%	31	10,667,997.55	6.39%	30	10,271,423.62	6.36%
8.51% - 9.00%	119	34,493,521.69	20.65%	112	32,553,389.58	20.15%
9.01% - 9.50%	15	4,959,373.90	2.97%	14	4,409,152.05	2.73%
9.51% - 10.00%	17	5,155,756.49	3.09%	17	5,151,270.30	3.19%
> 10%	67	20,985,806.32	12.56%	64	19,840,112.32	12.28%
	589	167,078,630.41	99.80%	570	161,519,611.62	100.00%

Number of Loans



Balance Outstanding

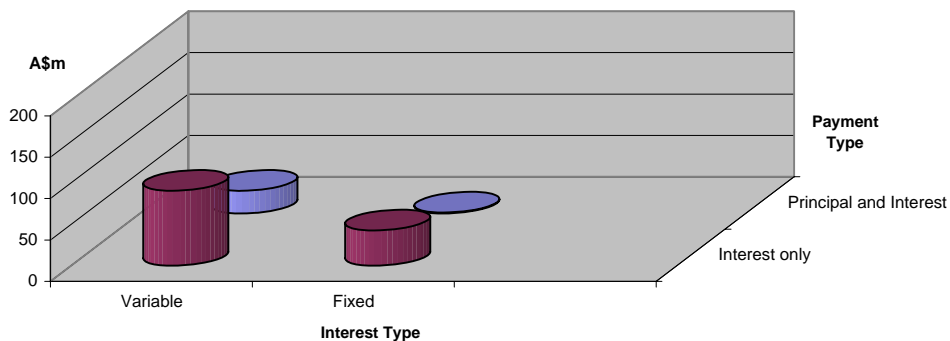


Distribution by Repayment Types:

Repayment Types	No. of Loans (LM)	Current Balance (LM)	% (LM)	No. of Loans	Current Balance	%
Principal and Interest	119	30,736,635.90	18.40%	113	28,374,345.92	17.57%
Interest only	470	136,341,994.51	81.60%	457	133,145,265.70	82.43%
	589	167,078,630.41	100.00%	570	161,519,611.62	100.00%

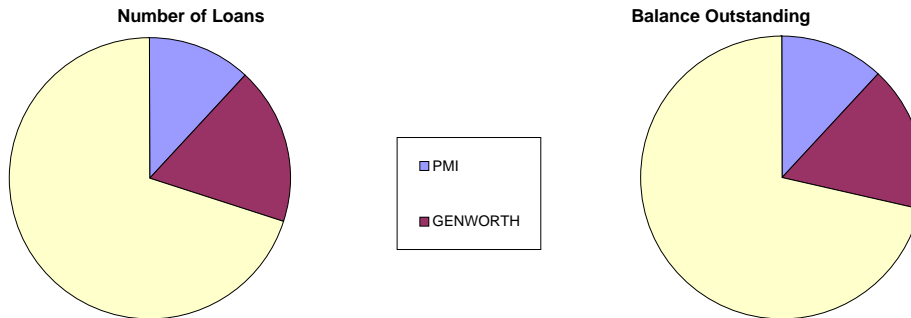
Distribution by Interest Types:

Repayment Types	No. of Loans (LM)	Current Balance (LM)	% (LM)	No. of Loans	Current Balance	%
Variable	453	123,203,882.14	73.74%	436	118,023,583.18	73.07%
Fixed	136	43,874,748.27	26.26%	134	43,496,028.44	26.93%
	589	167,078,630.41	100.00%	570	161,519,611.62	100.00%



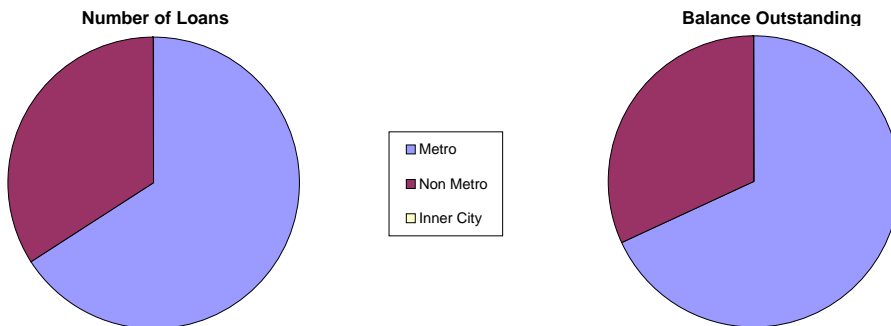
Distribution by Mortgage Insurer

Mortgage Insurer	No. of Loans (LM)	Current Balance (LM)	% (LM)	No. of Loans	Current Balance	%
PMI	56	20,228,911.99	12.11%	54	19,333,168	11.97%
GENWORTH	81	26,999,078.48	16.16%	81	26,663,394	16.51%
MGIC	326	119,850,639.94	71.73%	313	115,523,050	71.52%
	463	167,078,630.41	100.00%	448	161,519,611.62	100.00%



Distribution by Metro/Non-Metro

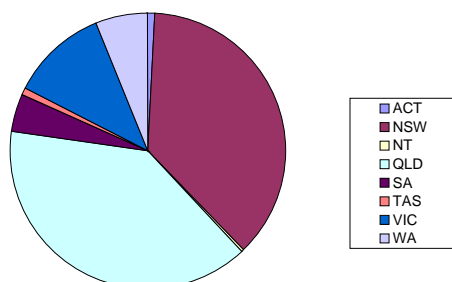
Original Occupancy Status	No. of securities (LM)	Current Balance (LM)	% (LM)	No. of securities	Current Balance	%
Metro	343	115,013,974.99	68.84%	329	110,003,507.81	68.11%
Non Metro	171	52,064,655.42	31.16%	170	51,516,103.81	31.89%
Inner City	-	-	0.00%	-	-	0.00%
	514	167,078,630.41	100.00%	499	161,519,611.62	100.00%



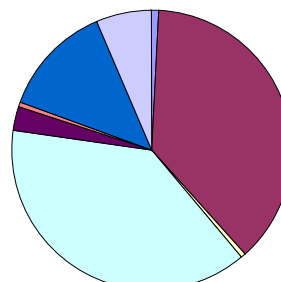
Distribution by Property Location

Property Location	No. of securities (LM)	Current Balance (LM)	% (LM)	No. of securities	Current Balance	%
ACT	5	1,474,558.70	0.88%	4	1,233,311.54	0.76%
NSW	188	62,642,596.29	37.49%	184	60,832,098.71	37.66%
NT	2	575,264.39	0.34%	2	575,067.48	0.36%
QLD	200	63,255,390.18	37.86%	196	61,911,650.64	38.33%
SA	22	5,264,507.91	3.15%	21	4,859,280.43	3.01%
TAS	4	645,245.44	0.39%	4	644,714.47	0.40%
VIC	60	21,966,935.74	13.15%	57	21,124,318.54	13.08%
WA	33	11,254,131.76	6.74%	31	10,339,169.82	6.40%
	514	167,078,630.41	100.00%	499	161,519,611.62	100.00%

Number of Loans



Balance Outstanding



Distribution of Arrears

Days in Arrears	No. of Loans (LM)	Current Balance (LM)	% (LM)	No. of Loans	Current Balance	%
0	563	156,528,056	93.69%	549	151,966,787.42	94.09%
1 - 30	22	7,847,792	4.70%	18	7,125,673.79	4.41%
31 - 60	3	1,425,783	0.85%	4	1,744,025.56	1.08%
61 - 90	3	944,150	0.57%	2	683,124.85	0.42%
>90	1	332,850	0.20%	-	-	0.00%
	592	167,078,630.41	100.00%	573	161,519,611.62	100.00%

Distribution by Product Type

Product Type	No. of Loans (LM)	Current Balance (LM)	% (LM)	No. of Loans	Current Balance	%
Full Documentation	249	82,867,537.53	49.60%	242	80,806,084.56	50.03%
Low Documentation	136	58,239,945.55	34.86%	130	55,689,239.20	34.48%
No Documentation	78	25,971,147.33	15.54%	76	25,024,287.86	15.49%
	463	167,078,630.41	100.00%	448	161,519,611.62	100.00%

Nautilus Trust No. 1 Series 2008-1

March 4, 2009

Monthly Waterfall Calculation Report

Collection Period (start)	February 01, 2009
Collection Period (end)	February 28, 2009
Actual number of days in the Collection Period	28
Payment Period (start)	February 04, 2009
Payment Period (end)	March 04, 2009
Actual number of days in the Payment Period	28
BBSW	3.39000 %

Receivables reconciliation

Outstanding Balance of Receivables as at the start of preceding collection period	167,078,630.41
Add:Fees charges	160,274.75
Add:Interest Charges	1,152,633.67
Add:Redraws and Further Advances paid during the period	827,107.99
Less:Repayments	7,699,035.20
Outstanding Balance of Receivables as at end of preceding collection period	161,519,611.62

A. OUTSTANDING NOTE ANALYSIS

Class A Notes

Number of Outstanding Notes	14,560
Margin for the Notes	2.35000 %
Interest Rate for the Notes	5.74000 %
Interest Accrued (i.e. due on next Payment Date)	477,422.40
Interest to be paid on next Payment Date	477,422.40
Unpaid Interest Carry Forward	0.00

Opening Invested Amount	108,426,281.60
Opening Stated Amount	108,426,281.60
Principal Repayments to be made on next Payment Date	5,511,105.60
Charge Offs to be made on next Payment Date	0.00
Charge Offs to be reimbursed on next Payment Date	0.00
Carry over Charge Offs as of next Payment Date	0.00
Closing Invested Amount	102,915,176.00
Closing Stated Amount	102,915,176.00

Opening Principal Factor	0.74468600
Principal Paid Factor	0.03785100
Interest Paid Factor	0.00327900
Closing Principal Factor	0.70683500

Class B Notes

Number of Outstanding Notes	6,240
Margin for the Notes	3.40000 %
Interest Rate for the Notes	6.79000 %
Interest Accrued (i.e. due on next Payment Date)	321,360.00
Interest to be paid on next Payment Date	321,360.00

Nautilus Trust No. 1 Series 2008-1

March 4, 2009

Unpaid Interest Carry Forward	0.00
Opening Invested Amount	61,696,676.79
Opening Stated Amount	61,696,676.79
Principal Repayments to be made on next Payment Date	184,229.62
Charge Offs to be made on next Payment Date	0.00
Charge Offs to be reimbursed on next Payment Date	0.00
Carry over Charge Offs as of next Payment Date	0.00
Closing Invested Amount	61,512,447.17
Closing Stated Amount	61,512,447.17
Opening Principal Factor	0.98872879
Principal Paid Factor	0.00295240
Interest Paid Factor	0.00515000
Closing Principal Factor	0.98577640
<u>Class T Notes</u>	
Number of Outstanding Notes	0
Margin for the Notes	0.00000 %
Interest Rate for the Notes	3.39000 %
Interest Accrued (i.e. due on next Payment Date)	1,829.03
Interest to be paid on next Payment Date	1,829.03
Unpaid Interest Capitalised	0.00
Opening Amount	703,323.21
Amount Issued During Period	184,229.62
Opening Stated Amount	703,323.21
Principal Repayments to be made on next Payment Date	0.00
Charge Offs to be made on next Payment Date	0.00
Charge Offs to be reimbursed on next Payment Date	0.00
Carry over Charge Offs as of next Payment Date	0.00
Closing Invested Amount	887,552.83
Closing Stated Amount	887,552.83
<u>Liquidity Notes</u>	
Number of Outstanding Notes	0
Margin for the Notes	0.00000 %
Interest Rate for the Notes	3.39000 %
Interest Accrued (i.e. due on next Payment Date)	0.00
Interest to be paid on next Payment Date	0.00
Unpaid Interest Carry Forward	0.00
Opening Invested Amount	0.00
Opening Stated Amount	0.00
Principal Repayments to be made on next Payment Date	0.00
Charge Offs to be made on next Payment Date	0.00
Charge Offs to be reimbursed on next Payment Date	0.00
Carry over Charge Offs as of next Payment Date	0.00
Closing Invested Amount	0.00
Closing Stated Amount	0.00

Nautilus Trust No. 1 Series 2008-1

March 4, 2009

Opening Principal Factor	0.00000000
Principal Paid Factor	0.00000000
Interest Paid Factor	0.00000000
Closing Principal Factor	0.00000000

B. LIQUIDITY RESERVE

Liquidity Reserve Required amount	748,800.00
Opening Balance	748,800.00
Less: Liquidity Reserve Draw towards Total Available Income	0.00
Less: Excess towards Total Available Income	0.00
Reimbursement of Liquidity Reserve Draw previously unreimbursed	0.00
Closing Balance	748,800.00

C. SPREAD RESERVE

Opening Balance	883,000.00
Floor Amount	150,000.00
Spread Reserve Required amount	883,000.00
Required Spread Reserve Draw	0.00
Available Spread Reserve Draw	733,000.00
Less: Actual Spread Reserve Draw towards Total Available Income	0.00
Less: Excess towards Total Available Income	0.00
Reimbursement of Spread Reserve Draw previously unreimbursed	0.00
Top up of Spread Reserve to next periods required reserve balance	0.00
Closing Balance	883,000.00

D. UNREIMBURSED PRINCIPAL DRAW

Opening Balance	860,752.97
Principal Draw from Current Period (Accruals for Collection Period)	617,644.28
Principal Draw from Current Period (Accruals between Determination Date and Payment Date)	145,574.82
Principal Draw from Current Period (Liquidity Shortfall)	0.00
Reimbursement of Principal Draw	860,752.97
Closing Balance	763,219.10

E. MGIC RESERVE

MGIC Reserve Required amount	3,800,000.00
Opening Balance	3,800,000.00
Less: MGIC Reserve Draw towards Total Available Income	0.00
Less: Excess towards repaying Outstanding MGIC Loan	0.00
Closing Balance	3,800,000.00

Nautilus Trust No. 1 Series 2008-1

March 4, 2009

F. AVAILABLE CASH

Collections for Preceding Collection Period	7,699,035.20
Less: Interest Posted during the collection period	1,152,633.67
Less: Borrower Exit Fees in the nature of Income	0.00
Less: Accrual Amount for the Collection Period	617,644.28
Less: Shortfall Adjustment calculated on the preceding Determination Date	0.00
Less: Principal component of Collection Period Distributions	827,107.99
Redraws distributed during the collection period	827,107.99
Principal component of Timely Payment Cover to the Mortgage Insurer	0.00
PRINCIPAL COLLECTIONS	5,559,018.79
Principal Collections	5,559,018.79
Reimbursement of Principal Draw	1,829.03
Reimbursement of Charge offs and Carryover Charge offs	0.00
Less: Principal Draw	763,219.10
PRINCIPAL REPAYMENT FUND	5,656,552.66
Undistributed amount from previous period	133.27
TOTAL AVAILABLE PRINCIPAL FOR DISTRIBUTION	5,656,685.93
Shortfall Adjustment applicable next period	0.00
Required Payments	925,734.90
Collections	7,699,035.20
Less: Collection Period Distributions	827,107.99
Redraws distributed during the collection period	827,107.99
Timely Payment Cover to the Mortgage Insurer	0.00
Break Costs paid during collection Period	0.00
Less: Principal Collections	5,559,018.79
Other Income	19,238.74
Net payments to be received under the Derivatives Contracts	0.00
INTEREST COLLECTIONS	1,332,147.16
Interest Collections	1,332,147.16
Principal Draw	763,219.10
Liquidity Reserve Draw	0.00
Excess Liquidity Reserve	0.00
Spread Reserve Draw	0.00
MGIC Reserve Draw	0.00
TOTAL INTEREST COLLECTIONS	2,095,366.26
Undistributed amount from previous period	0.00
TOTAL AVAILABLE INCOME FOR DISTRIBUTION	2,095,366.26

Nautilus Trust No. 1 Series 2008-1

March 4, 2009

G. Distribution of Total Interest Collections - Clause 1.10 of Supplementary Terms Notice

Amount available for Distribution	2,095,366.26
a) \$100 to the Participation Unitholders	100.00
b) Taxes	0.00
c) Fees and expenses to Trustee, Security Trustee, Custodian and Standby-Servicer	5,776.55
d) Other Series Expenses	216.45
e) (i) Fees and expenses to Manager	32,476.52
e) (ii) Fees and expenses to the Servicer	27,259.20
f) (i) Unpaid Interest and Interest for Class A Notes	477,422.40
f) (ii) Unpaid Interest and Interest for Liquidity Notes	0.00
f) (iii) Net payment to the Derivative Counterparty (DC) including Break Cost if the DC is not the Defaulting Party	61,123.78
g) Unpaid Interest and Interest for Class B Notes	321,360.00
h) Reimbursement of outstanding Liquidity Reserve Draw from previous periods	0.00
i) Reimbursement of outstanding Principal Draw and Accrual Amount	860,752.97
j) Reimbursement of liquidation losses and carry-over liquidation losses	0.00
k) Unpaid Interest and Interest for Class T Notes	1,829.03
l) Reimbursement of outstanding Spread Reserve Draw from previous periods	0.00
m) Tax Shortfall	0.00
n) Tax Amount	0.00
o) Break Costs under Derivative Contract where Derivative Counterparty is the Defaulting Party	0.00
p) Amounts (non-principal) due to any other Secured Creditor	0.00
q) All Class T Interest previously capitalised, after Termination Date	0.00
r) (i) 60% of Surplus to Participation Unitholder A	184,229.62
r) (ii) 40% of Surplus to Participation Unitholder B	122,819.75

H. Distribution of Principal Repayment Fund - Clause 1.12 of Supplementary Terms Notice

Amount available for Distribution	5,656,685.93
a) Principal Draw	145,574.82
b) Repayment of Further Advances and Redraws	0.00
c) Principal payment to Liquidity Noteholders	0.00
d) If Pro_Rata test is satisfied, pari passu payments towards reducing Class A, AB and B notes outstanding balance to zero	0.00
e) Principal payment to Class A Noteholders	5,511,105.60
f) Principal payment to Class B Noteholders	0.00
g) Principal payment to Class T Noteholders	0.00
h) Amount upto in aggregate to the subscription proceeds of the residual unit	0.00
i) (i) 50% of Surplus to Participation Unitholder A	0.00
i) (ii) 50% of Surplus to Participation Unitholder B	0.00