

**INDEX**

Page

Collateral Pool Information**2-9**

Summary Data

2

Distribution by Original Loan Balance

3

Distribution by Original LVR

3

Distribution by Current Loan Balance

4

Distribution by Current LVR

4

Distribution by Seasoning

5

Distribution by Original Loan Term

5

Distribution by Remaining Term

6

Distribution by Interest Rate

7

Distribution by Repayment Types

7

Distribution by Interest Types

7

Distribution by Mortgage Insurer

8

Distribution by Metro/Non-Metro

8

Distribution by Property Location

9

Distribution of Arrears

9

Distribution by Original Occupancy Status

9

Note Information and Waterfall**10-10**

Portfolio Data as of 31-Dec-07

SUMMARY DATA

Aggregate Principal Balance	249,018,805.76
Number of Loans	830

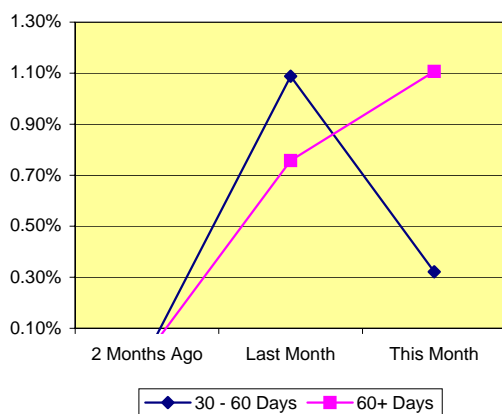
	Range	Average	Median
Principal Balance (A\$)	0.00 - 1,336,752.80	300,022.66	270,283.46
Interest Rate	6.70% - 10.04%	8.28% *	
Remaining Term (Months)	232.70 - 357.53	347.55	347.29
Original Balance (A\$)	10,812.00 - 1,336,752.80	318,194.68	279,960.25
Original Term (Months)	240.00 - 360.00	359.57	360.00
Current LVR	0.00% - 99.66%	77.08% *	
Seasoning (Months)	2.47 - 18.05	12.01	12.62

* Weighted Average

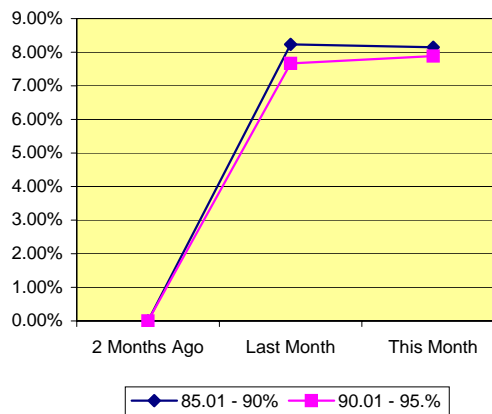
Delinquency Status	Balance (A\$)	Percentage of Pool		
	This Month	2 Months Ago	Last Month	This Month
30 - 60 Days	800,740.66	0.00%	1.09%	0.32%
60+ Days	2,756,794.32	0.00%	0.76%	1.11%

High LVR Loans	Balance (A\$)	Percentage of Pool		
	This Month	2 Months Ago	Last Month	This Month
Current LVR				
80.01 - 85%	79,502,577.94	0.00%	29.82%	31.93%
85.01 - 90%	20,283,618.13	0.00%	8.23%	8.15%
90.01 - 95.0%	19,634,828.65	0.00%	7.66%	7.88%
95.01%-100%	5,654,769.17	0.00%	2.63%	2.27%

% of Delinquent Loans



% of High LVR Loans

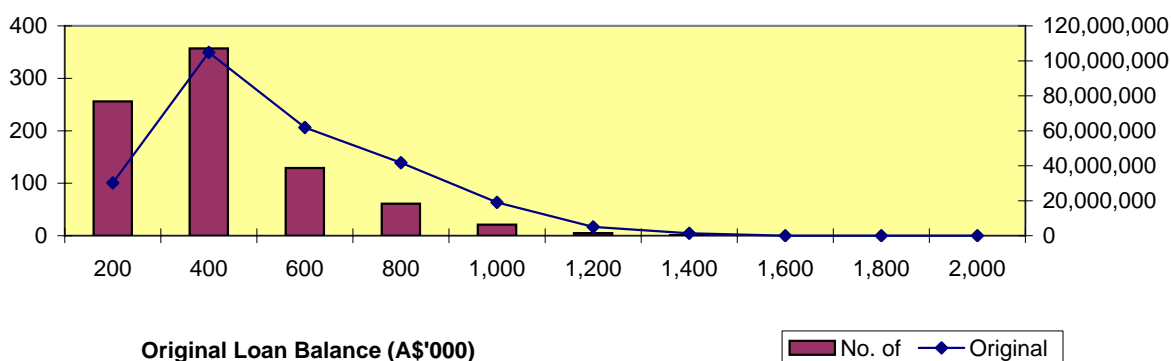




Distribution by Original Loan Balance

Loan Balance (A\$)	No. of Loans (LM*)	Original Balance (LM)	% (LM)	No. of Loans	Original Balance	%
0.01 - 200,000.00	254	30,059,661.27	11.33%	256	30,203,713.02	11.44%
200,000.01 - 400,000.00	356	104,803,031.71	39.49%	357	104,828,657.69	39.69%
400,000.01 - 600,000.00	130	62,390,030.79	23.51%	129	61,916,867.75	23.44%
600,000.01 - 800,000.00	62	42,674,625.18	16.08%	61	41,732,114.04	15.80%
800,000.01 - 1,000,000.00	21	19,076,189.00	7.19%	21	19,064,450.70	7.22%
1,000,000.01 - 1,200,000.00	5	5,019,026.77	1.89%	5	5,019,026.77	1.90%
1,200,000.01 - 1,400,000.00	1	1,336,752.80	0.50%	1	1,336,752.80	0.51%
1,400,000.01 - 1,600,000.00	-	-	0.00%	-	-	0.00%
1,600,000.01 - 1,800,000.00	-	-	0.00%	-	-	0.00%
1,800,000.01 - 2,000,000.00	-	-	0.00%	-	-	0.00%
	829	265,359,317.52	100.00%	830	264,101,582.77	100.00%

*Last Month

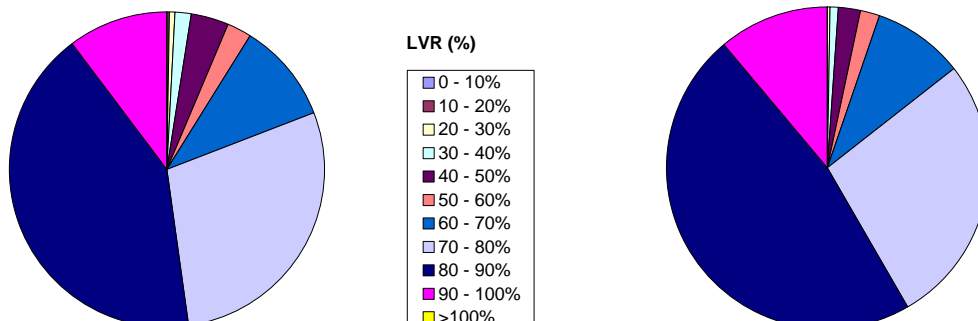


Distribution by Approval LVR

LVR Range:	No. of Loans (LM)	Current Balance (LM)	% (LM)	No. of Loans	Current Balance	%
0.01% - 10.00%	-	-	0.00%	-	-	0.00%
10.01% - 20.00%	3	231,896.57	0.09%	3	231,777.90	0.09%
20.01% - 30.00%	4	437,291.90	0.17%	4	436,267.76	0.18%
30.01% - 40.00%	14	2,605,298.50	1.04%	14	2,440,284.09	0.98%
40.01% - 50.00%	31	5,357,664.72	2.13%	31	5,440,877.44	2.18%
50.01% - 60.00%	21	4,680,023.04	1.86%	21	4,552,968.17	1.83%
60.01% - 70.00%	86	23,827,091.82	9.48%	86	23,004,789.32	9.24%
70.01% - 80.00%	238	67,986,634.96	27.06%	238	67,348,684.16	27.05%
80.01% - 90.00%	347	118,355,236.07	47.11%	348	118,070,204.12	47.41%
90.01% - 100.00%	85	27,742,829.45	11.04%	85	27,492,952.80	11.04%
> 100.00%	-	-	0.00%	-	-	0.00%
	829	251,223,967.03	100.00%	830	249,018,805.76	100.00%

Number of Loans

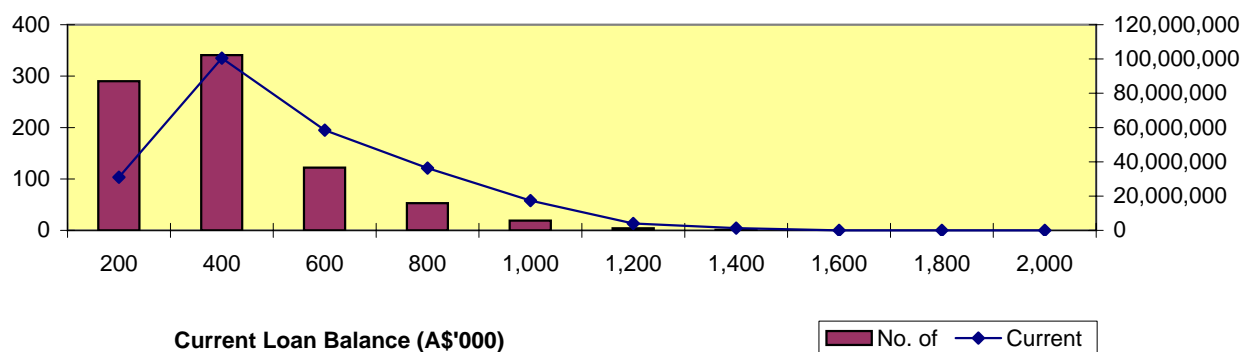
Balance Outstanding





Distribution by Current Loan Balance

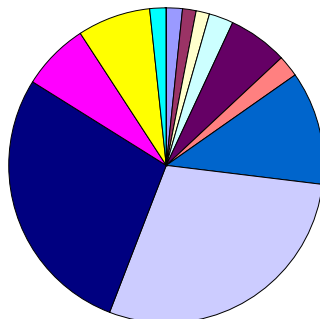
Loan Balance (A\$)	No. of Loans (LM)	Current Balance (LM)	% (LM)	No. of Loans	Current Balance	%
0.01 - 200,000.00	283	31,319,187.05	12.47%	290	31,031,248.86	12.46%
200,000.01 - 400,000.00	344	100,738,580.64	40.10%	341	100,483,980.64	40.35%
400,000.01 - 600,000.00	123	58,816,831.89	23.41%	122	58,459,330.26	23.48%
600,000.01 - 800,000.00	55	37,593,535.64	14.96%	53	36,281,607.92	14.57%
800,000.01 - 1,000,000.00	19	17,402,879.48	6.93%	19	17,409,815.57	6.99%
1,000,000.01 - 1,200,000.00	4	4,016,199.53	1.60%	4	4,016,069.71	1.61%
1,200,000.01 - 1,400,000.00	1	1,336,752.80	0.53%	1	1,336,752.80	0.54%
1,400,000.01 - 1,600,000.00	-	-	0.00%	-	-	0.00%
1,600,000.01 - 1,800,000.00	-	-	0.00%	-	-	0.00%
1,800,000.01 - 2,000,000.00	-	-	0.00%	-	-	0.00%
	829	251,223,967.03	100.00%	830	249,018,805.76	100.00%



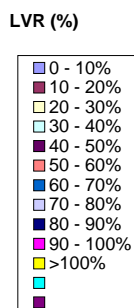
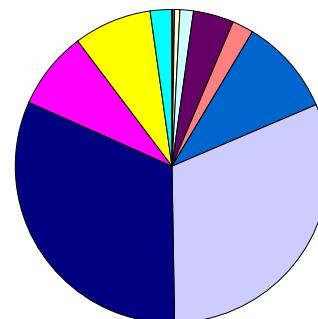
Distribution by Current LVR

LVR Range:	No. of Loans (LM)	Current Balance (LM)	% (LM)	No. of Loans	Current Balance	%
0.01% - 10.00%	9	21,778.21	0.01%	14	15,371.76	0.01%
10.01% - 20.00%	11	748,107.24	0.30%	11	806,693.37	0.32%
20.01% - 30.00%	9	895,043.01	0.36%	11	1,031,308.83	0.41%
30.01% - 40.00%	21	4,069,232.54	1.62%	21	3,764,777.33	1.51%
40.01% - 50.00%	45	9,395,370.97	3.74%	52	10,447,525.74	4.20%
50.01% - 60.00%	21	5,231,566.96	2.08%	18	5,034,541.60	2.02%
60.01% - 70.00%	95	24,865,602.72	9.90%	97	25,311,504.64	10.16%
70.01% - 80.00%	264	84,527,437.79	33.65%	239	77,531,288.60	31.13%
80.01% - 85.00%	219	74,926,905.28	29.82%	234	79,502,577.94	31.93%
85.01% - 90.00%	56	20,678,566.08	8.23%	57	20,283,618.13	8.15%
90.01% - 95.00%	62	19,254,286.91	7.66%	62	19,634,828.65	7.88%
95.01% - 100.00%	17	6,610,069.32	2.63%	14	5,654,769.17	2.27%
> 100.00%	-	-	0.00%	-	-	0.00%
	829	251,223,967.03	100.00%	830	249,018,805.76	100.00%

Number of Loans



Balance Outstanding



Distribution by Seasoning

Seasoning (Months)	No. of Loans (LM)	Current Balance (LM)	% (LM)	No. of Loans	Current Balance	%
0 - 3	27	8,759,705.68	3.49%	1	497,208.60	0.20%
4 - 6	46	14,163,614.00	5.64%	64	20,075,075.21	8.06%
7 - 9	205	64,127,629.48	25.53%	138	46,005,366.60	18.47%
10 - 12	149	47,466,884.58	18.89%	180	52,873,434.72	21.23%
13 - 15	236	68,421,414.58	27.24%	188	56,107,333.79	22.53%
16 - 18	166	48,284,718.71	19.22%	255	71,935,786.20	28.89%
19 - 21	-	-	0.00%	4	1,524,600.64	0.61%
22 - 24	-	-	0.00%	-	-	0.00%
25 - 27	-	-	0.00%	-	-	0.00%
28 - 30	-	-	0.00%	-	-	0.00%
	829	251,223,967.03	100.00%	830	249,018,805.76	100.00%

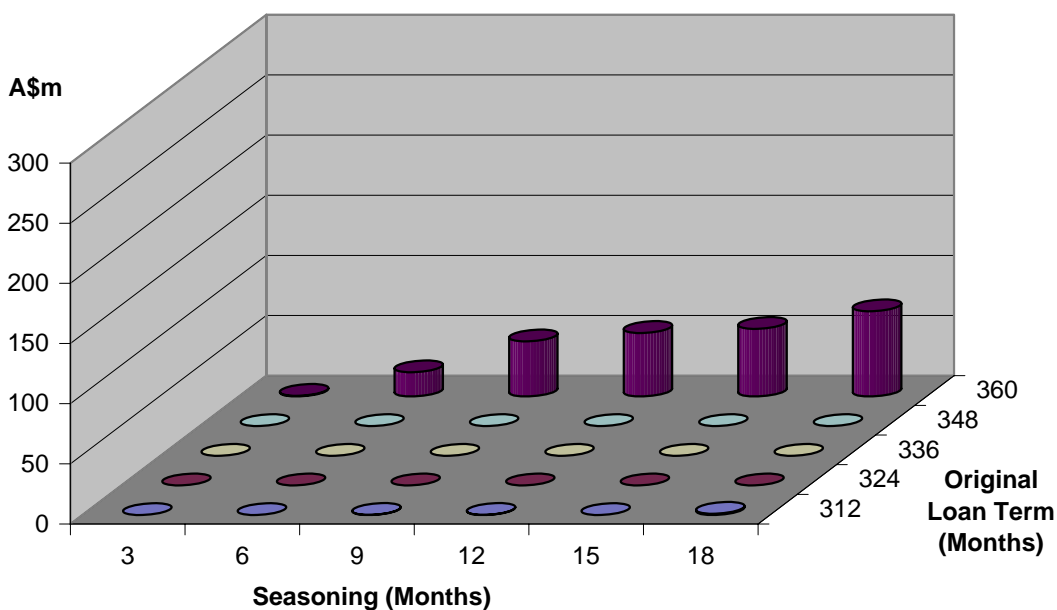
Distribution by Original Loan Term

Original Loan Term (Months)	No. of Loans (LM)	Current Balance (LM)	% (LM)	No. of Loans	Current Balance	%
0 - 303	5	1,577,914.74	0.63%	5	1,464,243.88	0.59%
304 - 306	-	-	0.00%	-	-	0.00%
307 - 309	-	-	0.00%	-	-	0.00%
310 - 312	-	-	0.00%	-	-	0.00%
313 - 315	-	-	0.00%	-	-	0.00%
316 - 318	-	-	0.00%	-	-	0.00%
319 - 321	-	-	0.00%	-	-	0.00%
322 - 324	-	-	0.00%	-	-	0.00%
325 - 327	-	-	0.00%	-	-	0.00%
328 - 330	-	-	0.00%	-	-	0.00%
331 - 333	-	-	0.00%	-	-	0.00%
334 - 336	-	-	0.00%	-	-	0.00%
337 - 339	-	-	0.00%	-	-	0.00%
340 - 342	-	-	0.00%	-	-	0.00%
343 - 345	-	-	0.00%	-	-	0.00%
346 - 348	-	-	0.00%	-	-	0.00%
349 - 351	-	-	0.00%	-	-	0.00%
352 - 354	-	-	0.00%	-	-	0.00%
355 - 357	-	-	0.00%	-	-	0.00%
358 - 360	824	249,646,052.29	99.37%	825	247,554,561.88	99.41%
	829	251,223,967.03	100.00%	830	249,018,805.76	100.00%



Distribution by Remaining Term:

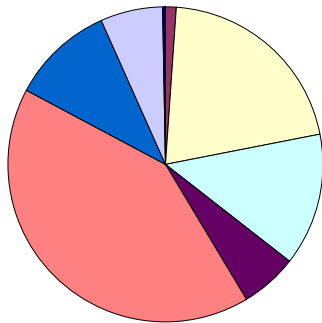
Remaining Term (Months)	No. of Loans (LM)	Current Balance (LM)	% (LM)	No. of Loans	Current Balance	%
0 - 303	5	1,577,914.74	0.63%	5	1,464,243.88	0.59%
304 - 306	-	-	0.00%	-	-	0.00%
307 - 309	-	-	0.00%	-	-	0.00%
310 - 312	-	-	0.00%	-	-	0.00%
313 - 315	-	-	0.00%	-	-	0.00%
316 - 318	-	-	0.00%	-	-	0.00%
319 - 321	-	-	0.00%	-	-	0.00%
322 - 324	-	-	0.00%	-	-	0.00%
325 - 327	-	-	0.00%	-	-	0.00%
328 - 330	-	-	0.00%	-	-	0.00%
331 - 333	-	-	0.00%	-	-	0.00%
334 - 336	-	-	0.00%	-	-	0.00%
337 - 339	-	-	0.00%	-	-	0.00%
340 - 342	-	-	0.00%	4	1,524,600.64	0.61%
343 - 345	166	48,284,718.71	19.22%	252	70,805,778.59	28.43%
346 - 348	234	67,443,762.97	26.85%	188	56,107,333.79	22.53%
349 - 351	147	47,068,380.23	18.74%	179	52,737,763.34	21.18%
352 - 354	204	63,925,870.70	25.45%	137	45,806,801.71	18.39%
355 - 357	46	14,163,614.00	5.64%	64	20,075,075.21	8.06%
358 - 360	27	8,759,705.68	3.49%	1	497,208.60	0.20%
	829	251,223,967.03	100.00%	830	249,018,805.76	100.00%



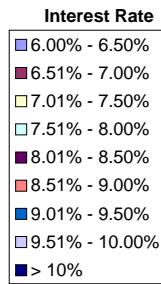
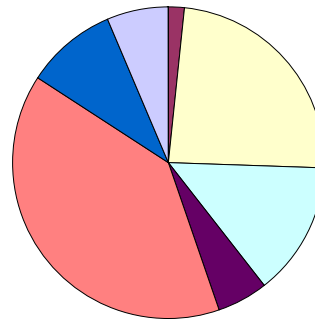
Distribution by Interest Rate

Interest Rate	No. of Loans (LM)	Current Balance (LM)	% (LM)	No. of Loans	Current Balance	%
6.00% - 6.50%	-	-	0.00%	-	-	0.00%
6.51% - 7.00%	10	4,043,759.21	1.61%	10	4,040,556.61	1.62%
7.01% - 7.50%	173	59,602,036.16	23.72%	172	59,512,854.12	23.90%
7.51% - 8.00%	114	35,480,382.26	14.12%	113	34,632,099.74	13.91%
8.01% - 8.50%	45	13,310,912.19	5.30%	48	13,403,229.87	5.38%
8.51% - 9.00%	342	98,414,624.86	39.17%	343	98,173,105.09	39.42%
9.01% - 9.50%	89	24,408,254.63	9.72%	88	23,269,310.50	9.34%
9.51% - 10.00%	54	15,810,584.98	6.29%	54	15,834,237.09	6.36%
> 10%	2	153,412.74	0.06%	2	153,412.74	0.06%
	829	251,223,967.03	100.00%	830	249,018,805.76	100.00%

Number of Loans



Balance Outstanding

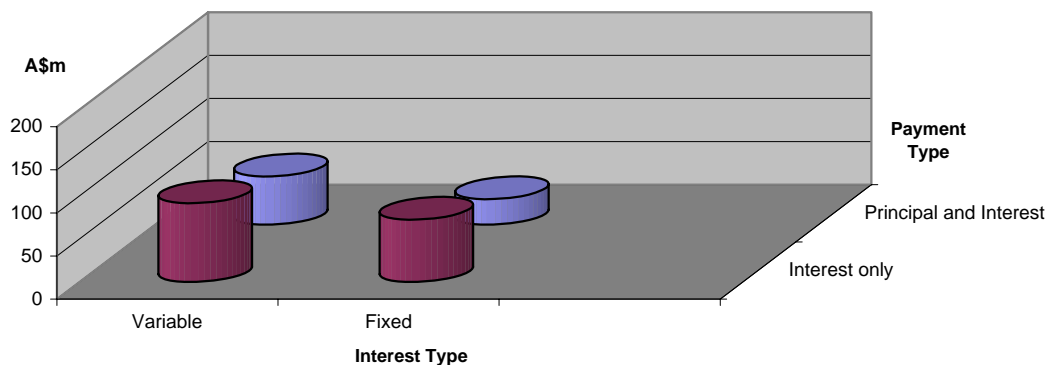


Distribution by Repayment Types:

Repayment Types	No. of Loans (LM)	Current Balance (LM)	% (LM)	No. of Loans	Current Balance	%
Principal and Interest	323	85,962,827.91	34.22%	323	85,543,173.72	34.35%
Interest only	506	165,261,139.12	65.78%	507	163,475,632.04	65.65%
	829	251,223,967.03	100.00%	830	249,018,805.76	100.00%

Distribution by Interest Types:

Repayment Types	No. of Loans (LM)	Current Balance (LM)	% (LM)	No. of Loans	Current Balance	%
Variable	518	148,637,420.75	59.17%	520	147,264,732.63	59.14%
Fixed	311	102,586,546.28	40.83%	310	101,754,073.13	40.86%
	829	251,223,967.03	100.00%	830	249,018,805.76	100.00%

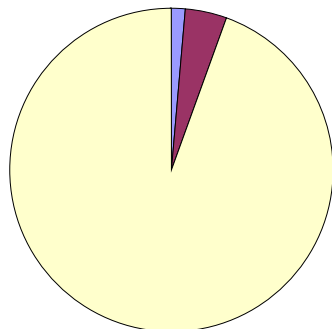




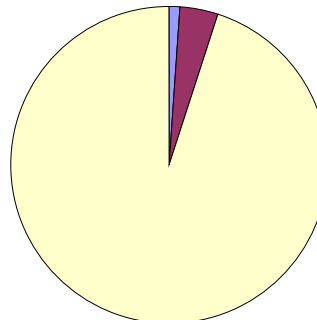
Distribution by Mortgage Insurer

Mortgage Insurer	No. of Loans (LM)	Current Balance (LM)	% (LM)	No. of Loans	Current Balance	%
PMI	11	2,867,328.61	1.14%	11	2,933,451	1.18%
GENWORTH	32	9,516,435.09	3.79%	36	9,480,760	3.81%
MGIC	786	238,840,203.33	95.07%	783	236,604,595	95.01%
	829	251,223,967.03	100.00%	830	249,018,805.76	100.00%

Number of Loans



Balance Outstanding

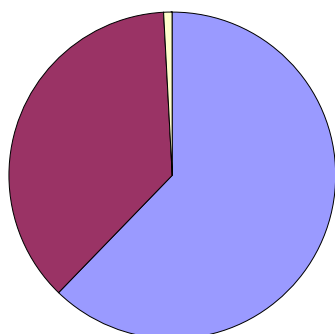


■ PMI
■ GENWORTH

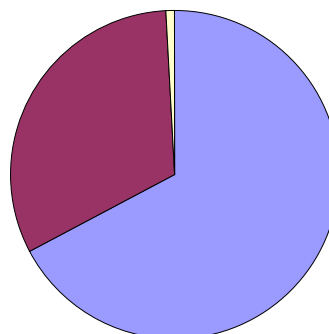
Distribution by Metro/Non-Metro

Original Occupancy Status	No. of securities (LM)	Current Balance (LM)	% (LM)	No. of securities	Current Balance	%
Metro	473	169,089,368.80	67.36%	473	167,605,157.99	67.31%
Non Metro	280	80,264,218.46	31.90%	280	79,559,685.58	31.95%
Inner City	6	1,870,379.77	0.74%	6	1,853,962.19	0.74%
	759	251,223,967.03	100.00%	759	249,018,805.76	100.00%

Number of Loans



Balance Outstanding

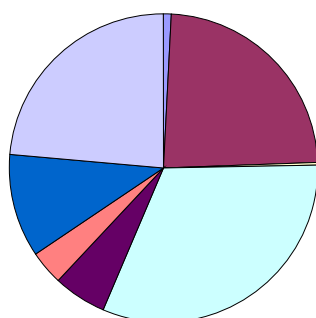


■ Metro
■ Non Metro
■ Inner City

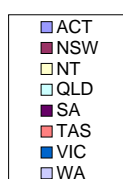
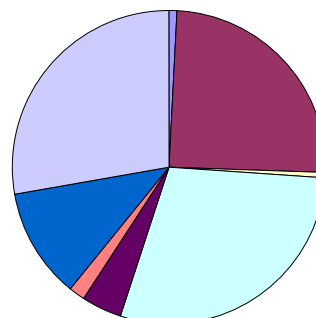
Distribution by Property Location

Property Location	No. of securities (LM)	Current Balance (LM)	% (LM)	No. of securities	Current Balance	%
ACT	6	1,887,086.42	0.74%	6	1,870,522.20	0.75%
NSW	179	62,263,465.89	24.69%	179	61,716,937.69	24.78%
NT	3	1,099,331.65	0.43%	3	1,089,682.08	0.44%
QLD	240	73,110,975.55	29.17%	240	72,469,231.48	29.10%
SA	43	10,034,732.60	3.76%	43	9,946,651.02	3.99%
TAS	26	4,640,516.97	1.89%	26	4,599,784.04	1.85%
VIC	83	28,441,008.16	11.30%	83	28,191,362.35	11.32%
WA	179	69,746,849.77	28.00%	179	69,134,634.89	27.76%
	759	251,223,967.00	100.00%	759	249,018,805.76	100.00%

Number of Loans



Balance Outstanding



Distribution of Arrears

Days in Arrears	No. of Loans (LM)	Current Balance (LM)	% (LM)	No. of Loans	Current Balance	%
	0	774	233,972,856.43	93%	777	232,499,206.75
1 - 30	38	12,614,560.90	5.02%	41	12,962,064.03	5.21%
31 - 60	9	2,733,265.18	1.09%	3	800,740.66	0.32%
61 - 90	8	1,903,284.52	0.76%	7	2,188,506.97	0.88%
>90	-	-	0.00%	2	568,287.35	0.23%
	829	251,223,967.03	100.00%	830	249,018,805.76	100.00%

Distribution by Product Type

Product Type	No. of Loans (LM)	Current Balance (LM)	% (LM)	No. of Loans	Current Balance	%
Full Documentation	116	32,145,167.25	12.80%	116	32,071,038.69	12.88%
Low Documentation	681	211,119,703.57	84.04%	682	209,015,676.40	83.94%
No Documentation	32	7,959,096.21	3.17%	32	7,932,090.67	3.19%
	829	251,223,967.03	100.00%	830	249,018,805.76	100.00%

Nautilus Trust No. 1 Series 2007-1

January 10, 2008

Monthly Waterfall Calculation Report

Collection Period (start)	December 01, 2007
Collection Period (end)	December 31, 2007
Payment Period (start)	December 10, 2007
Payment Period (end)	January 10, 2008
Actual number of days in the Payment Period	31
BBSW	7.0000 %

A. OUTSTANDING NOTE ANALYSIS

Class A Notes

Number of Outstanding Notes	20,400
Margin for the Notes	0.6900 %
Interest Rate for the Notes	7.6900 %
Interest Accrued (i.e. due on next Payment Date)	1,326,000.00
Interest to be paid on next Payment Date	1,326,000.00
Unpaid Interest Carry Forward	0.00
Opening Invested Amount	203,203,380.00
Opening Stated Amount	203,203,380.00
Principal Repayments to be made on next Payment Date	1,816,620.00
Charge Offs to be made on next Payment Date	0.00
Charge Offs to be reimbursed on next Payment Date	0.00
Carry over Charge Offs as of next Payment Date	0.00
Closing Invested Amount	201,386,760.00
Closing Stated Amount	201,386,760.00
Opening Principal Factor	0.99609500
Principal Paid Factor	0.00890500
Interest Paid Factor	0.00650000
Closing Principal Factor	0.98719000

B. Distribution of Principal Repayment Fund - Clause 1.12 of Supplementary Terms Notice

Amount available for Distribution	2,381,290.95
a) Principal Draw	564,588.70
b) Repayment of Further Advances and Redraws	0.00
c) Principal payment to Liquidity Noteholders	0.00
d) If Pro_Rata test is satisfied, pari passu payments towards reducing Class A, AB and B notes outstanding balance to zero	0.00
e) Principal payment to Class A Noteholders	1,816,620.00
f) Principal payment to Class AB Noteholders	0.00
g) Principal payment to Class B Noteholders	0.00
h) Principal payment to Class C Noteholders	0.00
i) Amount upto in aggregate to the subscription proceeds of the residual unit	0.00
j) (i) 50% of Surplus to Participation Unitholder A	0.00
j) (ii) 50% of Surplus to Participation Unitholder B	0.00