



INDEX	Page
Collateral Pool Information	2-9
Summary Data	2
Distribution by Original Loan Balance	3
Distribution by Original LVR	3
Distribution by Current Loan Balance	4
Distribution by Current LVR	4
Distribution by Seasoning	5
Distribution by Original Loan Term	5
Distribution by Remaining Term	6
Distribution by Interest Rate	7
Distribution by Repayment Types	7
Distribution by Interest Types	7
Distribution by Mortgage Insurer	8
Distribution by Metro/Non-Metro	8
Distribution by Property Location	9
Distribution of Arrears	9
Distribution by Original Occupancy Status	9
Note Information and Waterfall	10



Portfolio Data as of 31-Jul-08

SUMMARY DATA

Aggregate Principal Balance	218,268,904.63
Number of Loans	721

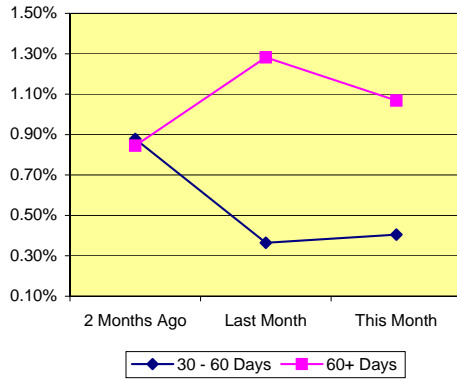
	Range	Average	Median
Principal Balance (A\$)	-46.72 - 1,080,000.00	302,730.80	272,738.19
Interest Rate	6.70% - 12.85%	8.84% *	
Remaining Term (Months)	334.95 - 357.14	341.10	340.24
Original Balance (A\$)	10,812.00 - 1,336,752.80	321,324.53	282,689.00
Original Term (Months)	360.00 - 360.00	360.00	360.00
Current LVR	0.00% - 99.66%	76.45% *	
Seasoning (Months)	2.86 - 25.05	18.90	19.76

* Weighted Average

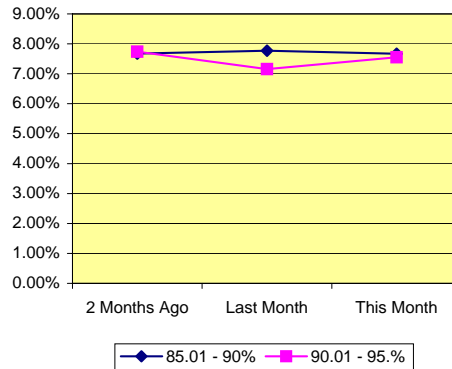
Delinquency Status	Balance (A\$)	Percentage of Pool		
	This Month	2 Months Ago	Last Month	This Month
30 - 60 Days	883,715.03	0.88%	0.36%	0.40%
60+ Days	2,331,596.87	0.85%	1.28%	1.07%

High LVR Loans	Balance (A\$)	Percentage of Pool		
	This Month	2 Months Ago	Last Month	This Month
Current LVR				
80.01 - 85%	66,615,009.53	28.53%	32.73%	30.52%
85.01 - 90%	16,744,429.91	7.68%	7.77%	7.67%
90.01 - 95.0%	16,479,888.35	7.74%	7.15%	7.55%
95.01%-100%	5,978,938.87	2.62%	2.95%	2.74%

% of Delinquent Loans



% of High LVR Loans

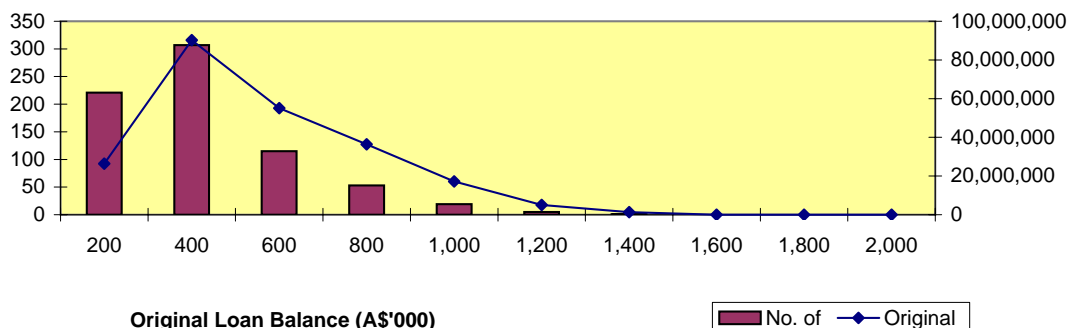




Distribution by Original Loan Balance

Loan Balance (A\$)	No. of Loans (LM*)	Original Balance (LM)	% (LM)	No. of Loans	Original Balance	%
0.01 - 200,000.00	223	26,576,179.64	11.34%	221	26,377,435.39	11.39%
200,000.01 - 400,000.00	309	90,997,852.91	38.83%	307	90,252,759.33	38.96%
400,000.01 - 600,000.00	117	56,254,390.35	24.00%	115	55,114,059.91	23.79%
600,000.01 - 800,000.00	54	36,970,801.48	15.77%	53	36,356,300.48	15.69%
800,000.01 - 1,000,000.00	19	17,218,652.95	7.35%	19	17,218,652.95	7.43%
1,000,000.01 - 1,200,000.00	5	5,019,026.77	2.14%	5	5,019,026.77	2.17%
1,200,000.01 - 1,400,000.00	1	1,336,752.80	0.57%	1	1,336,752.80	0.58%
1,400,000.01 - 1,600,000.00	-	-	0.00%	-	-	0.00%
1,600,000.01 - 1,800,000.00	-	-	0.00%	-	-	0.00%
1,800,000.01 - 2,000,000.00	-	-	0.00%	-	-	0.00%
	728	234,373,656.90	100.00%	721	231,674,987.63	100.00%

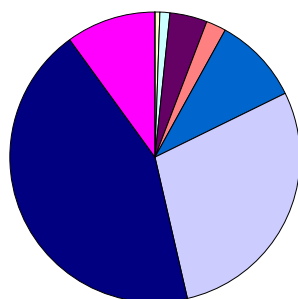
*Last Month



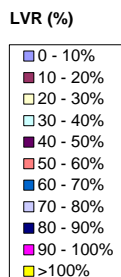
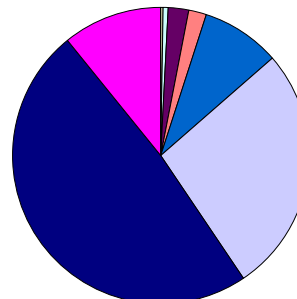
Distribution by Approval LVR

LVR Range:	No. of Loans (LM)	Current Balance (LM)	% (LM)	No. of Loans	Current Balance	%
0.01% - 10.00%	-	-	0.00%	-	-	0.00%
10.01% - 20.00%	1	107,807.45	0.05%	1	107,729.71	0.05%
20.01% - 30.00%	3	315,740.10	0.14%	3	314,993.59	0.14%
30.01% - 40.00%	9	1,430,152.50	0.65%	9	1,428,675.50	0.65%
40.01% - 50.00%	30	5,235,567.30	2.36%	29	5,056,838.71	2.32%
50.01% - 60.00%	17	4,157,517.83	1.88%	17	4,153,521.56	1.90%
60.01% - 70.00%	71	18,730,974.35	8.46%	70	18,543,333.25	8.50%
70.01% - 80.00%	210	60,685,686.44	27.41%	205	59,000,276.86	27.03%
80.01% - 90.00%	316	106,882,793.42	48.27%	315	105,864,578.44	48.50%
90.01% - 100.00%	71	23,883,210.74	10.79%	72	23,798,957.01	10.90%
> 100.00%	-	-	0.00%	-	-	0.00%
	728	221,429,450.13	100.00%	721	218,268,904.63	100.00%

Number of Loans



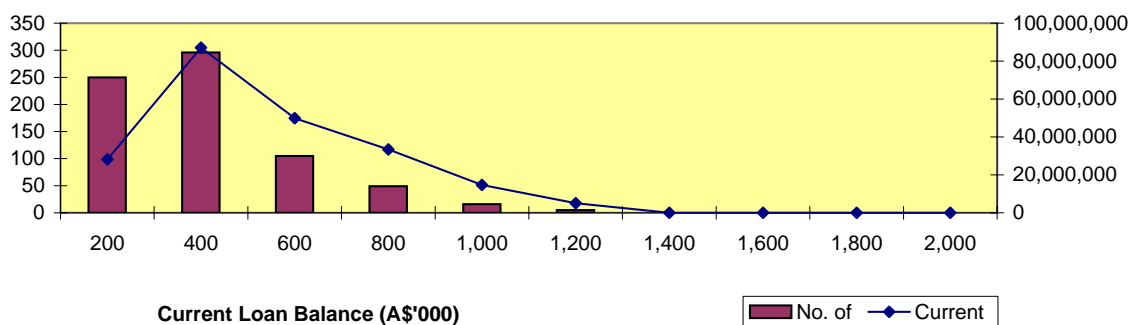
Balance Outstanding





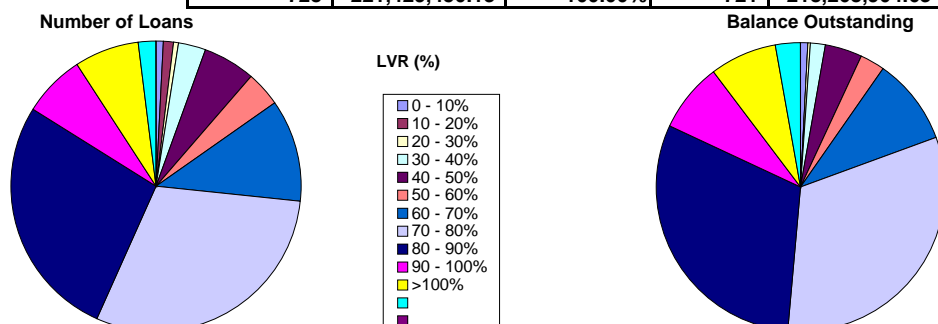
Distribution by Current Loan Balance

Loan Balance (A\$)	No. of Loans (LM)	Current Balance (LM)	% (LM)	No. of Loans	Current Balance	%
0.01 - 200,000.00	253	28,933,567.08	13.07%	250	28,183,083.49	12.91%
200,000.01 - 400,000.00	297	87,321,774.94	39.44%	296	87,077,037.62	39.89%
400,000.01 - 600,000.00	108	51,693,693.25	23.35%	105	49,838,961.86	22.83%
600,000.01 - 800,000.00	49	33,482,439.41	15.12%	49	33,430,768.90	15.32%
800,000.01 - 1,000,000.00	16	14,644,802.94	6.61%	16	14,642,633.05	6.71%
1,000,000.01 - 1,200,000.00	4	4,016,419.71	1.81%	5	5,096,419.71	2.33%
1,200,000.01 - 1,400,000.00	1	1,336,752.80	0.60%	-	-	0.00%
1,400,000.01 - 1,600,000.00	-	-	0.00%	-	-	0.00%
1,600,000.01 - 1,800,000.00	-	-	0.00%	-	-	0.00%
1,800,000.01 - 2,000,000.00	-	-	0.00%	-	-	0.00%
	728	221,429,450.13	100.00%	721	218,268,904.63	100.00%



Distribution by Current LVR

LVR Range:	No. of Loans (LM)	Current Balance (LM)	% (LM)	No. of Loans	Current Balance	%
0.01% - 10.00%	4	45,185.33	0.02%	7	1,543,493.33	0.71%
10.01% - 20.00%	6	484,042.97	0.22%	7	533,964.09	0.24%
20.01% - 30.00%	5	579,504.75	0.26%	5	579,371.59	0.27%
30.01% - 40.00%	20	3,252,525.83	1.47%	21	3,626,542.63	1.66%
40.01% - 50.00%	45	9,305,062.54	4.20%	43	8,760,888.96	4.01%
50.01% - 60.00%	32	8,264,254.64	3.73%	27	6,135,965.06	2.81%
60.01% - 70.00%	82	21,093,927.39	9.53%	82	21,357,882.29	9.79%
70.01% - 80.00%	207	66,344,485.64	29.96%	217	69,912,530.02	32.03%
80.01% - 85.00%	210	72,474,565.65	32.73%	195	66,615,009.53	30.52%
85.01% - 90.00%	52	17,200,961.16	7.77%	51	16,744,429.91	7.67%
90.01% - 95.00%	50	15,841,991.06	7.15%	52	16,479,888.35	7.55%
95.01% - 100.00%	15	6,542,943.17	2.95%	14	5,978,938.87	2.74%
> 100.00%	-	-	0.00%	-	-	0.00%
	728	221,429,450.13	100.00%	721	218,268,904.63	100.00%





Distribution by Seasoning

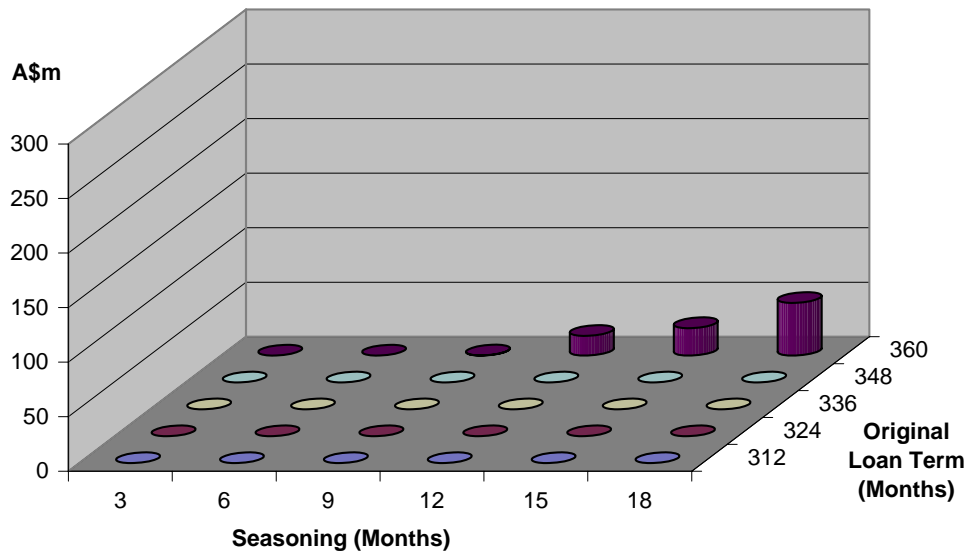
Seasoning (Months)	No. of Loans (LM)	Current Balance (LM)	% (LM)	No. of Loans	Current Balance	%
0 - 3	1	30,804.63	0.01%	1	30,804.63	0.01%
4 - 6	-	-	0.00%	-	-	0.00%
7 - 9	2	754,753.85	0.34%	1	125,001.65	0.06%
10 - 12	65	19,712,272.29	8.90%	57	18,054,839.23	8.27%
13 - 15	116	37,817,281.06	17.08%	84	25,160,507.83	11.53%
16 - 18	150	47,124,824.10	21.28%	155	48,294,161.15	22.13%
19 - 21	161	49,740,608.68	22.46%	127	41,611,591.17	19.06%
22 - 24	229	64,727,548.17	29.23%	257	74,407,545.06	34.09%
25 - 27	4	1,521,357.35	0.69%	39	10,584,453.91	4.85%
28 - 30	-	-	0.00%	-	-	0.00%
	728	221,429,450.13	100.00%	721	218,268,904.63	100.00%

Distribution by Original Loan Term

Original Loan Term (Months)	No. of Loans (LM)	Current Balance (LM)	% (LM)	No. of Loans	Current Balance	%
0 - 303	-	0.00	0.00%	-	0.00	0.00%
304 - 306	-	-	0.00%	-	-	0.00%
307 - 309	-	-	0.00%	-	-	0.00%
310 - 312	-	-	0.00%	-	-	0.00%
313 - 315	-	-	0.00%	-	-	0.00%
316 - 318	-	-	0.00%	-	-	0.00%
319 - 321	-	-	0.00%	-	-	0.00%
322 - 324	-	-	0.00%	-	-	0.00%
325 - 327	-	-	0.00%	-	-	0.00%
328 - 330	-	-	0.00%	-	-	0.00%
331 - 333	-	-	0.00%	-	-	0.00%
334 - 336	-	-	0.00%	-	-	0.00%
337 - 339	-	-	0.00%	-	-	0.00%
340 - 342	-	-	0.00%	-	-	0.00%
343 - 345	-	-	0.00%	-	-	0.00%
346 - 348	-	-	0.00%	-	-	0.00%
349 - 351	-	-	0.00%	-	-	0.00%
352 - 354	-	-	0.00%	-	-	0.00%
355 - 357	-	-	0.00%	-	-	0.00%
358 - 360	728	221,429,450.13	100.00%	721	218,268,904.63	100.00%
	728	221,429,450.13	100.00%	721	218,268,904.63	100.00%

Distribution by Remaining Term:

Remaining Term (Months)	No. of Loans (LM)	Current Balance (LM)	% (LM)	No. of Loans	Current Balance	%
0 - 303	-	-	0.00%	-	-	0.00%
304 - 306	-	-	0.00%	-	-	0.00%
307 - 309	-	-	0.00%	-	-	0.00%
310 - 312	-	-	0.00%	-	-	0.00%
313 - 315	-	-	0.00%	-	-	0.00%
316 - 318	-	-	0.00%	-	-	0.00%
319 - 321	-	-	0.00%	-	-	0.00%
322 - 324	-	-	0.00%	-	-	0.00%
325 - 327	-	-	0.00%	-	-	0.00%
328 - 330	-	-	0.00%	-	-	0.00%
331 - 333	-	-	0.00%	-	-	0.00%
334 - 336	4	1,521,357.35	0.69%	42	10,954,006.04	5.02%
337 - 339	229	64,727,548.17	29.23%	254	74,037,992.93	33.92%
340 - 342	161	49,740,608.68	22.46%	127	41,611,591.17	19.06%
343 - 345	150	47,124,824.10	21.28%	155	48,294,161.15	22.13%
346 - 348	116	37,817,281.06	17.08%	84	25,160,507.83	11.53%
349 - 351	65	19,712,272.29	8.90%	57	18,054,839.23	8.27%
352 - 354	2	754,753.85	0.34%	1	125,001.65	0.06%
355 - 357	-	-	0.00%	-	-	0.00%
358 - 360	1	30,804.63	0.01%	1	30,804.63	0.01%
728	221,429,450.13	100.00%	721	218,268,904.63	100.00%	

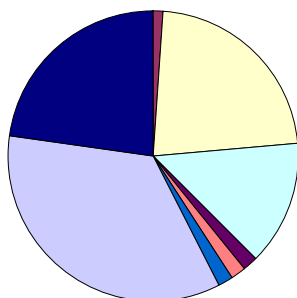




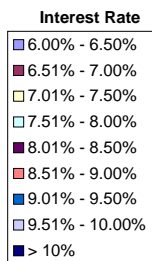
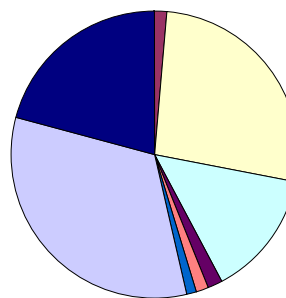
Distribution by Interest Rate

Interest Rate	No. of Loans (LM)	Current Balance (LM)	% (LM)	No. of Loans	Current Balance	%
6.00% - 6.50%	-	-	0.00%	-	-	0.00%
6.51% - 7.00%	8	3,096,189.41	1.40%	8	3,109,432.30	1.42%
7.01% - 7.50%	164	58,820,424.92	26.56%	162	58,332,953.66	26.73%
7.51% - 8.00%	101	31,205,807.72	14.09%	100	30,995,493.34	14.20%
8.01% - 8.50%	12	3,288,252.41	1.49%	13	3,558,161.09	1.63%
8.51% - 9.00%	10	2,738,499.12	1.24%	11	3,076,754.10	1.41%
9.01% - 9.50%	15	2,457,976.28	1.11%	12	2,454,156.78	1.12%
9.51% - 10.00%	256	75,183,374.45	33.95%	250	71,129,167.00	32.59%
> 10%	162	44,638,925.82	20.16%	165	45,612,786.36	20.90%
	728	221,429,450.13	100.00%	721	218,268,904.63	100.00%

Number of Loans



Balance Outstanding

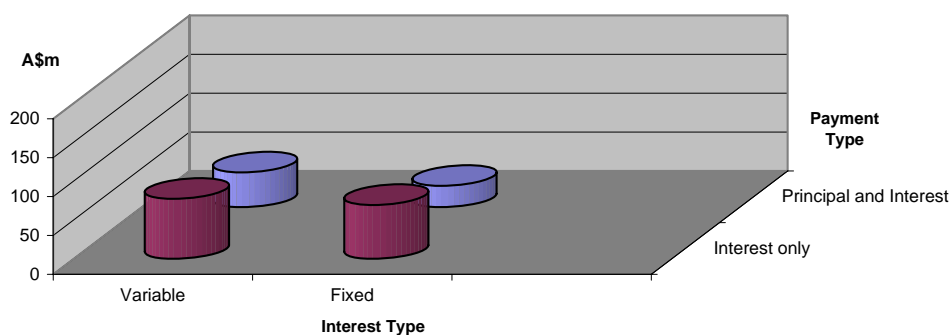


Distribution by Repayment Types:

Repayment Types	No. of Loans (LM)	Current Balance (LM)	% (LM)	No. of Loans	Current Balance	%
Principal and Interest	267	72,965,082.51	32.95%	265	72,008,775.06	32.99%
Interest only	461	148,464,367.62	67.05%	456	146,260,129.57	67.01%
	728	221,429,450.13	100.00%	721	218,268,904.63	100.00%

Distribution by Interest Types:

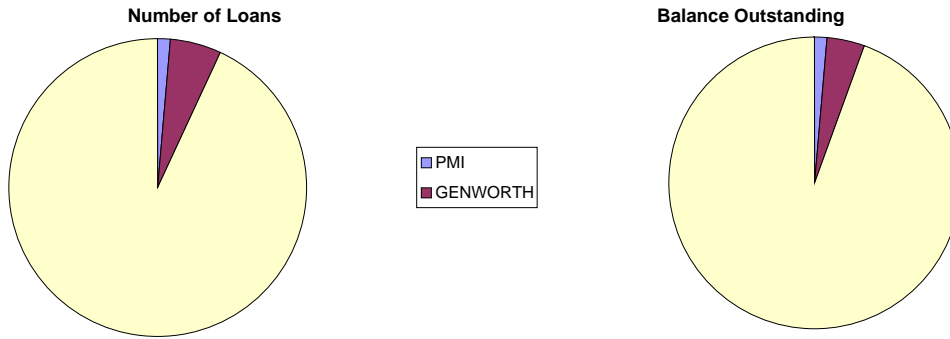
Repayment Types	No. of Loans (LM)	Current Balance (LM)	% (LM)	No. of Loans	Current Balance	%
Variable	438	124,491,767.36	56.22%	433	121,753,524.33	55.78%
Fixed	290	96,937,682.77	43.78%	288	96,515,380.30	44.22%
	728	221,429,450.13	100.00%	721	218,268,904.63	100.00%





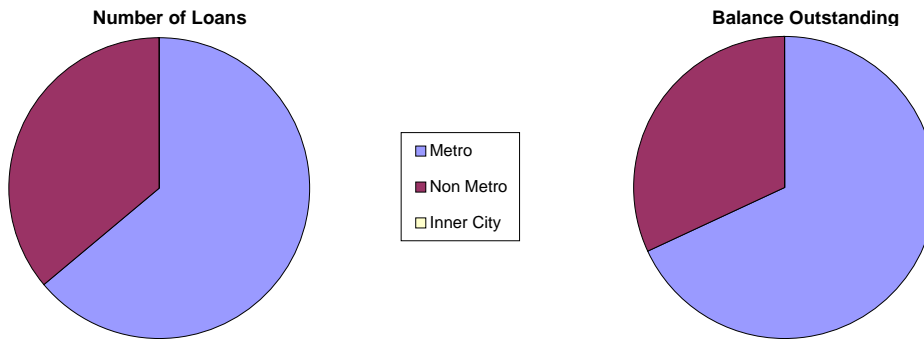
Distribution by Mortgage Insurer

Mortgage Insurer	No. of Loans (LM)	Current Balance (LM)	% (LM)	No. of Loans	Current Balance	%
PMI	11	2,947,173.18	1.33%	11	2,969,260.64	1.36%
GENWORTH	37	8,893,083.04	4.02%	39	9,120,653.81	4.18%
MGIC	680	209,589,193.91	94.65%	671	206,178,990.18	94.46%
	728	221,429,450.13	100.00%	721	218,268,904.63	100.00%



Distribution by Metro/Non-Metro

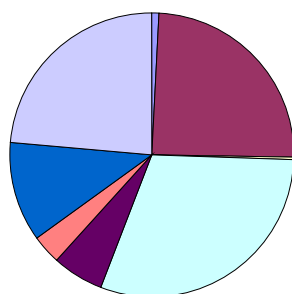
Original Occupancy Status	No. of securities (LM)	Current Balance (LM)	% (LM)	No. of securities	Current Balance	%
Metro	415	150,822,415.13	68.11%	415	148,571,110.95	68.07%
Non Metro	239	70,607,035.00	31.89%	235	69,697,793.68	31.93%
Inner City	-	-	0.00%	-	-	0.00%
	654	221,429,450.13	100.00%	650	218,268,904.63	100.00%



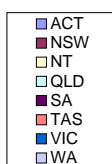
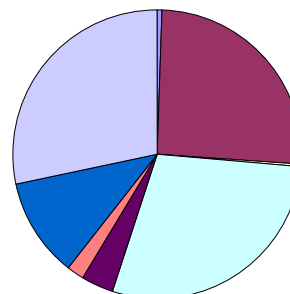
Distribution by Property Location

Property Location	No. of securities (LM)	Current Balance (LM)	% (LM)	No. of securities	Current Balance	%
ACT	5	1,465,883.13	0.66%	5	1,461,186.64	0.67%
NSW	160	55,694,885.32	25.15%	160	55,649,880.03	25.50%
NT	1	253,809.41	0.11%	1	253,636.02	0.12%
QLD	199	62,426,256.02	28.19%	197	62,799,570.83	28.77%
SA	37	8,685,246.38	3.92%	37	7,941,138.72	3.64%
TAS	23	4,171,657.07	1.88%	23	4,171,233.03	1.91%
VIC	74	24,414,561.05	11.03%	73	23,960,583.30	10.98%
WA	155	64,317,151.75	29.05%	154	62,031,676.06	28.42%
	654	221,429,450.13	100.00%	650	218,268,904.63	100.00%

Number of Loans



Balance Outstanding



Distribution of Arrears

Days in Arrears	No. of Loans (LM)	Current Balance (LM)	% (LM)	No. of	Current	%
				Loans	Balance	
0	699	209,385,102.94	94.56%	692	206,790,736.59	94.74%
1 - 30	23	9,195,016.31	4.15%	22	8,262,856.14	3.79%
31 - 60	4	1,996,459.32	0.90%	2	883,715.03	0.40%
61 - 90	-	-	0.00%	1	782,035.45	0.36%
>90	2	852,871.56	0.39%	4	1,549,561.42	0.71%
	728	221,429,450.13	100.00%	721	218,268,904.63	100.00%

Distribution by Product Type

Product Type	No. of Loans (LM)	Current Balance (LM)	% (LM)	No. of Loans	Current Balance	%
Full Documentation	103	29,809,295.32	13.46%	106	30,648,158.35	14.04%
Low Documentation	593	185,038,619.77	83.57%	582	181,012,634.83	82.93%
No Documentation	32	6,581,535.04	2.97%	33	6,608,111.45	3.03%
	728	221,429,450.13	100.00%	721	218,268,904.63	100.00%

Nautilus Trust No. 1 Series 2007-1

August 11, 2008

Monthly Waterfall Calculation Report

Collection Period (start)	July	01, 2008
Collection Period (end)	July	31, 2008
Payment Period (start)	July	10, 2008
Payment Period (end)	August	11, 2008
Actual number of days in the Payment Period		32
BBSW		7.5400 %

A. OUTSTANDING NOTE ANALYSIS

Class A Notes

Number of Outstanding Notes		20,400
Margin for the Notes		0.6900 %
Interest Rate for the Notes		8.2300 %
Interest Accrued (i.e. due on next Payment Date)		1,247,868.00
Interest to be paid on next Payment Date		1,247,868.00
Unpaid Interest Carry Forward		0.00
Opening Invested Amount		173,420,400.00
Opening Stated Amount		173,420,400.00
Principal Repayments to be made on next Payment Date		3,053,676.00
Charge Offs to be made on next Payment Date		0.00
Charge Offs to be reimbursed on next Payment Date		0.00
Carry over Charge Offs as of next Payment Date		0.00
Closing Invested Amount		170,366,724.00
Closing Stated Amount		170,366,724.00
Opening Principal Factor		0.85010000
Principal Paid Factor		0.01496900
Interest Paid Factor		0.00611700
Closing Principal Factor		0.83513100

B. Distribution of Principal Repayment Fund - Clause 1.12 of Supplementary Terms Notice

Amount available for Distribution		3,635,032.68
a) Principal Draw		581,212.97
b) Repayment of Further Advances and Redraws		0.00
c) Principal payment to Liquidity Noteholders		0.00
d) If Pro_Rata test is satisfied, pari passu payments towards reducing Class A, AB and B notes outstanding balance to zero		0.00
e) Principal payment to Class A Noteholders		3,053,676.00
f) Principal payment to Class AB Noteholders		0.00
g) Principal payment to Class B Noteholders		0.00
h) Principal payment to Class C Noteholders		0.00
i) Amount upto in aggregate to the subscription proceeds of the residual unit		0.00
j) (i) 50% of Surplus to Participation Unitholder A		0.00
j) (ii) 50% of Surplus to Participation Unitholder B		0.00