



INDEX	Page
Collateral Pool Information	2-9
Summary Data	2
Distribution by Original Loan Balance	3
Distribution by Original LVR	3
Distribution by Current Loan Balance	4
Distribution by Current LVR	4
Distribution by Seasoning	5
Distribution by Original Loan Term	5
Distribution by Remaining Term	6
Distribution by Interest Rate	7
Distribution by Repayment Types	7
Distribution by Interest Types	7
Distribution by Mortgage Insurer	8
Distribution by Metro/Non-Metro	8
Distribution by Property Location	9
Distribution of Arrears	9
Distribution by Original Occupancy Status	9
Note Information and Waterfall	10



Portfolio Data as of 31-Jan-09

SUMMARY DATA

Aggregate Principal Balance	195,355,711.21
Number of Loans	655

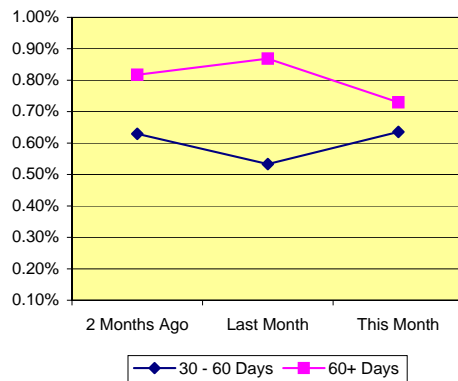
	Range	Average	Median
Principal Balance (A\$)	-378.59 - 1,080,000.00	298,252.99	268,033.45
Interest Rate	6.70% - 10.59%	7.73% *	
Remaining Term (Months)	328.90 - 351.09	335.01	334.19
Original Balance (A\$)	10,812.00 - 1,336,752.80	322,054.62	290,000.00
Original Term (Months)	360.00 - 360.00	360.00	360.00
Current LVR	0.00% - 99.64%	77.06% *	
Seasoning (Months)	8.91 - 31.10	24.99	25.81

* Weighted Average

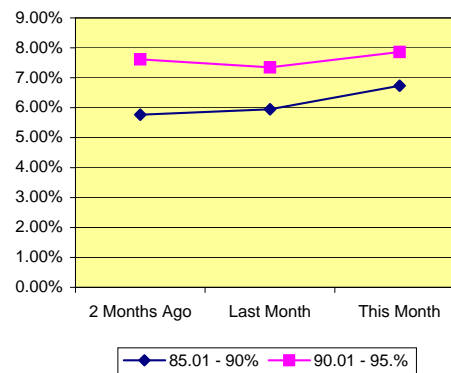
Delinquency Status	Balance (A\$)	Percentage of Pool		
	This Month	2 Months Ago	Last Month	This Month
30 - 60 Days	1,241,925.63	0.63%	0.53%	0.64%
60+ Days	1,425,466.72	0.82%	0.87%	0.73%

High LVR Loans	Balance (A\$)	Percentage of Pool		
	This Month	2 Months Ago	Last Month	This Month
Current LVR				
80.01 - 85%	59,246,256.98	32.42%	30.46%	30.33%
85.01 - 90%	13,152,925.85	5.76%	5.95%	6.73%
90.01 - 95.0%	15,355,108.15	7.62%	7.35%	7.86%
95.01%-100%	5,846,971.28	2.68%	2.95%	2.99%

% of Delinquent Loans



% of High LVR Loans

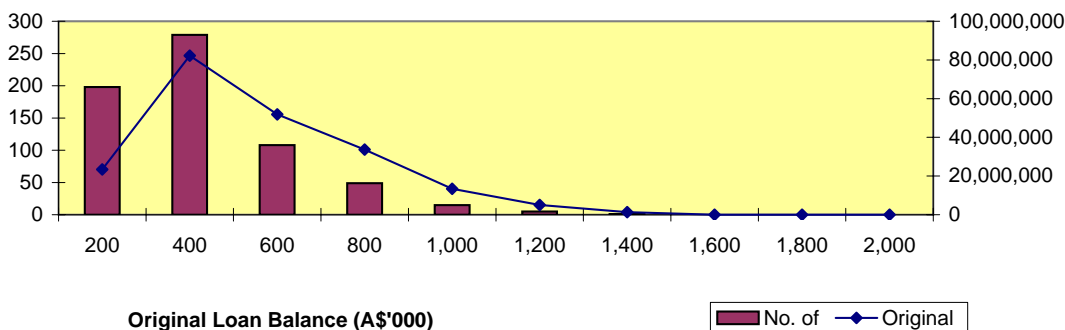




Distribution by Original Loan Balance

Loan Balance (A\$)	No. of Loans (LM*)	Original Balance (LM)	% (LM)	No. of Loans	Original Balance	%
0.01 - 200,000.00	201	23,744,439.57	11.12%	198	23,421,525.91	11.10%
200,000.01 - 400,000.00	282	82,945,176.41	38.85%	279	82,201,997.05	38.97%
400,000.01 - 600,000.00	110	52,769,549.70	24.71%	108	51,852,568.67	24.58%
600,000.01 - 800,000.00	50	34,265,703.48	16.05%	49	33,677,694.48	15.97%
800,000.01 - 1,000,000.00	15	13,436,213.21	6.29%	15	13,436,213.21	6.37%
1,000,000.01 - 1,200,000.00	5	5,019,026.77	2.35%	5	5,019,026.77	2.38%
1,200,000.01 - 1,400,000.00	1	1,336,752.80	0.63%	1	1,336,752.80	0.63%
1,400,000.01 - 1,600,000.00	-	-	0.00%	-	-	0.00%
1,600,000.01 - 1,800,000.00	-	-	0.00%	-	-	0.00%
1,800,000.01 - 2,000,000.00	-	-	0.00%	-	-	0.00%
	664	213,516,861.94	100.00%	655	210,945,778.89	100.00%

*Last Month

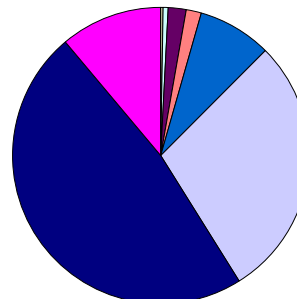
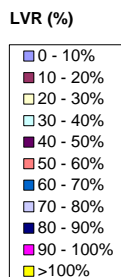
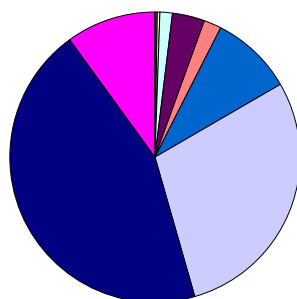


Distribution by Approval LVR

LVR Range:	No. of Loans (LM)	Current Balance (LM)	% (LM)	No. of Loans	Current Balance	%
0.01% - 10.00%	-	-	0.00%	-	-	0.00%
10.01% - 20.00%	1	107,037.07	0.05%	1	106,975.73	0.05%
20.01% - 30.00%	3	313,662.07	0.16%	3	313,352.85	0.16%
30.01% - 40.00%	9	1,440,350.25	0.73%	9	1,440,604.49	0.74%
40.01% - 50.00%	23	3,728,492.76	1.88%	23	3,726,248.46	1.91%
50.01% - 60.00%	14	3,892,181.33	1.97%	13	3,269,781.35	1.67%
60.01% - 70.00%	63	16,646,729.46	8.41%	61	15,748,779.57	8.06%
70.01% - 80.00%	191	55,735,684.75	28.16%	188	55,831,991.96	28.58%
80.01% - 90.00%	293	94,151,547.88	47.56%	291	93,162,933.84	47.69%
90.01% - 100.00%	67	21,942,933.19	11.08%	66	21,755,042.96	11.14%
> 100.00%	-	-	0.00%	-	-	0.00%
	664	197,958,618.76	100.00%	655	195,355,711.21	100.00%

Number of Loans

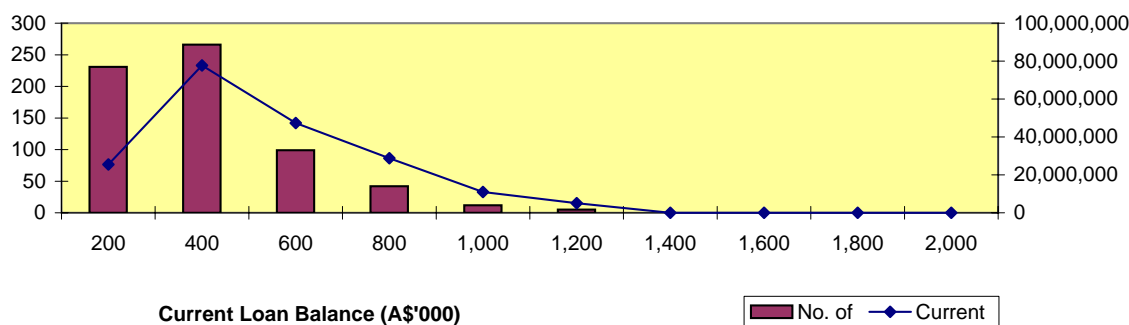
Balance Outstanding





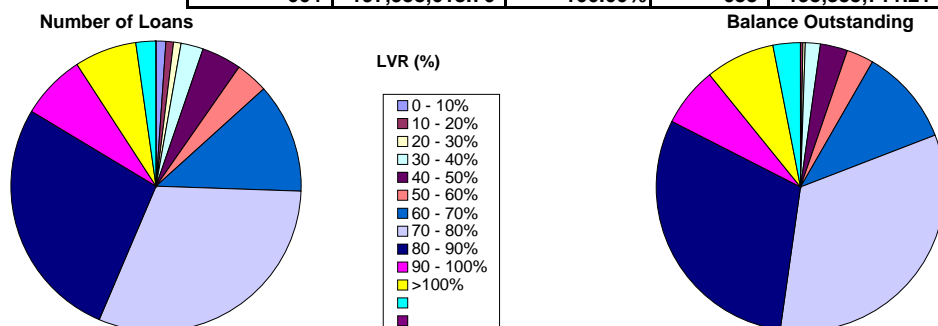
Distribution by Current Loan Balance

Loan Balance (A\$)	No. of Loans (LM)	Current Balance (LM)	% (LM)	No. of Loans	Current Balance	%
0.01 - 200,000.00	233	25,731,624.32	13.00%	231	25,501,010.10	13.05%
200,000.01 - 400,000.00	270	78,782,008.99	39.80%	266	77,681,236.28	39.76%
400,000.01 - 600,000.00	102	48,622,602.15	24.56%	99	47,315,460.96	24.22%
600,000.01 - 800,000.00	42	28,763,507.22	14.53%	42	28,792,447.04	14.74%
800,000.01 - 1,000,000.00	12	10,956,298.33	5.53%	12	10,962,476.23	5.61%
1,000,000.01 - 1,200,000.00	5	5,102,577.75	2.58%	5	5,103,080.60	2.61%
1,200,000.01 - 1,400,000.00	-	-	0.00%	-	-	0.00%
1,400,000.01 - 1,600,000.00	-	-	0.00%	-	-	0.00%
1,600,000.01 - 1,800,000.00	-	-	0.00%	-	-	0.00%
1,800,000.01 - 2,000,000.00	-	-	0.00%	-	-	0.00%
	664	197,958,618.76	100.00%	655	195,355,711.21	100.00%



Distribution by Current LVR

LVR Range:	No. of Loans (LM)	Current Balance (LM)	% (LM)	No. of Loans	Current Balance	%
0.01% - 10.00%	7	62,083.56	0.03%	7	55,461.07	0.03%
10.01% - 20.00%	6	474,173.52	0.24%	5	303,598.82	0.16%
20.01% - 30.00%	6	671,118.27	0.34%	7	767,105.09	0.39%
30.01% - 40.00%	16	3,383,298.63	1.71%	16	3,380,704.58	1.73%
40.01% - 50.00%	30	6,305,248.70	3.19%	29	6,065,151.50	3.10%
50.01% - 60.00%	29	7,788,540.69	3.93%	23	5,949,331.08	3.05%
60.01% - 70.00%	81	21,556,070.31	10.89%	81	21,099,192.40	10.80%
70.01% - 80.00%	209	65,257,689.30	32.97%	202	64,133,904.41	32.83%
80.01% - 85.00%	181	60,292,248.33	30.46%	177	59,246,256.98	30.33%
85.01% - 90.00%	40	11,778,892.69	5.95%	48	13,152,925.85	6.73%
90.01% - 95.00%	45	14,542,963.65	7.35%	46	15,355,108.15	7.86%
95.01% - 100.00%	14	5,846,291.11	2.95%	14	5,846,971.28	2.99%
> 100.00%	-	-	0.00%	-	-	0.00%
	664	197,958,618.76	100.00%	655	195,355,711.21	100.00%



Distribution by Seasoning

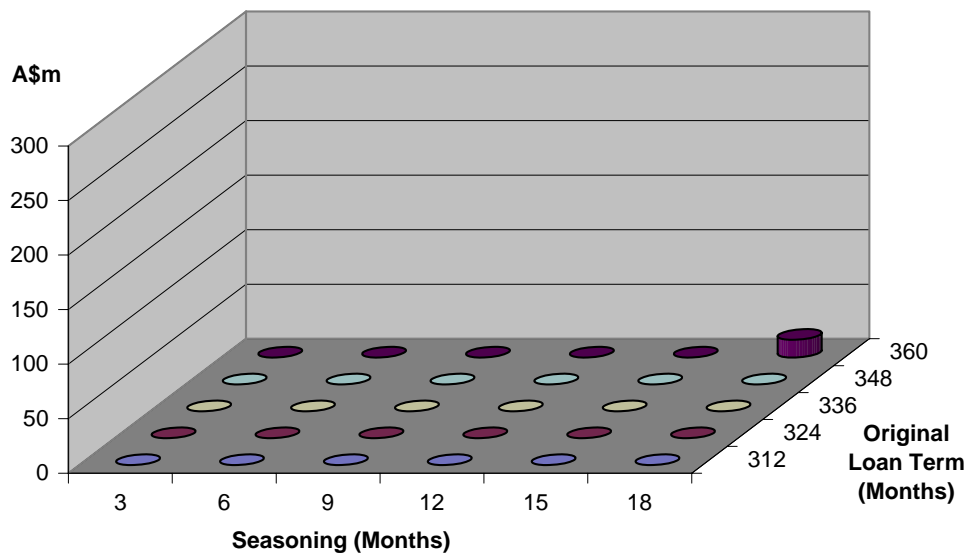
Seasoning (Months)	No. of Loans (LM)	Current Balance (LM)	% (LM)	No. of Loans	Current Balance	%
0 - 3	-	-	0.00%	-	-	0.00%
4 - 6	-	-	0.00%	-	-	0.00%
7 - 9	1	30,804.63	0.02%	1	30,804.63	0.02%
10 - 12	-	-	0.00%	-	-	0.00%
13 - 15	5	1,439,971.64	0.73%	-	-	0.00%
16 - 18	58	18,666,476.98	9.43%	50	16,230,258.25	8.31%
19 - 21	95	29,537,330.38	14.92%	66	19,581,606.22	10.02%
22 - 24	145	43,785,928.45	22.12%	143	42,830,349.80	21.92%
25 - 27	150	46,846,019.68	23.66%	127	41,316,607.23	21.15%
28 - 30	210	57,652,087.00	29.12%	268	75,366,085.08	38.58%
	664	197,958,618.76	100.00%	655	195,355,711.21	100.00%

Distribution by Original Loan Term

Original Loan Term (Months)	No. of Loans (LM)	Current Balance (LM)	% (LM)	No. of Loans	Current Balance	%
0 - 303	-	0.00	0.00%	-	0.00	0.00%
304 - 306	-	-	0.00%	-	-	0.00%
307 - 309	-	-	0.00%	-	-	0.00%
310 - 312	-	-	0.00%	-	-	0.00%
313 - 315	-	-	0.00%	-	-	0.00%
316 - 318	-	-	0.00%	-	-	0.00%
319 - 321	-	-	0.00%	-	-	0.00%
322 - 324	-	-	0.00%	-	-	0.00%
325 - 327	-	-	0.00%	-	-	0.00%
328 - 330	-	-	0.00%	-	-	0.00%
331 - 333	-	-	0.00%	-	-	0.00%
334 - 336	-	-	0.00%	-	-	0.00%
337 - 339	-	-	0.00%	-	-	0.00%
340 - 342	-	-	0.00%	-	-	0.00%
343 - 345	-	-	0.00%	-	-	0.00%
346 - 348	-	-	0.00%	-	-	0.00%
349 - 351	-	-	0.00%	-	-	0.00%
352 - 354	-	-	0.00%	-	-	0.00%
355 - 357	-	-	0.00%	-	-	0.00%
358 - 360	664	197,958,618.76	100.00%	655	195,355,711.21	100.00%
	664	197,958,618.76	100.00%	655	195,355,711.21	100.00%

Distribution by Remaining Term:

Remaining Term (Months)	No. of Loans (LM)	Current Balance (LM)	% (LM)	No. of Loans	Current Balance	%
0 - 303	-	-	0.00%	-	-	0.00%
304 - 306	-	-	0.00%	-	-	0.00%
307 - 309	-	-	0.00%	-	-	0.00%
310 - 312	-	-	0.00%	-	-	0.00%
313 - 315	-	-	0.00%	-	-	0.00%
316 - 318	-	-	0.00%	-	-	0.00%
319 - 321	-	-	0.00%	-	-	0.00%
322 - 324	-	-	0.00%	-	-	0.00%
325 - 327	-	-	0.00%	-	-	0.00%
328 - 330	2	466,524.50	0.00%	40	10,583,844.65	5.42%
331 - 333	208	57,185,562.50	0.00%	228	64,782,240.43	33.16%
334 - 336	150	46,846,019.68	23.66%	127	41,316,607.23	21.15%
337 - 339	145	43,785,928.45	22.12%	143	42,830,349.80	21.92%
340 - 342	95	29,537,330.38	14.92%	66	19,581,606.22	10.02%
343 - 345	58	18,666,476.98	9.43%	50	16,230,258.25	8.31%
346 - 348	5	1,439,971.64	0.73%	-	-	0.00%
349 - 351	-	-	0.00%	-	-	0.00%
352 - 354	1	30,804.63	0.02%	1	30,804.63	0.02%
355 - 357	-	-	0.00%	-	-	0.00%
358 - 360	-	-	0.00%	-	-	0.00%
	664	197,958,618.76	70.88%	655	195,355,711.21	100.00%

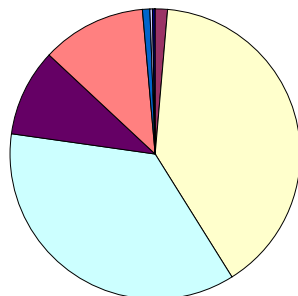




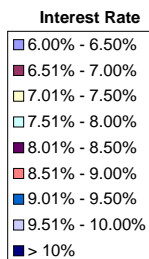
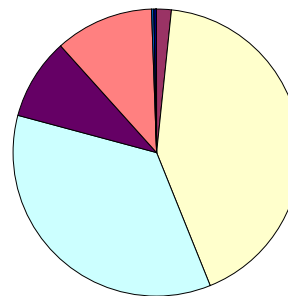
Distribution by Interest Rate

Interest Rate	No. of Loans (LM)	Current Balance (LM)	% (LM)	No. of Loans	Current Balance	%
6.00% - 6.50%	-	-	0.00%	-	-	0.00%
6.51% - 7.00%	8	3,189,676.03	1.61%	9	3,268,471.54	1.67%
7.01% - 7.50%	156	55,929,191.15	28.25%	261	82,462,220.90	42.21%
7.51% - 8.00%	104	30,328,479.16	15.32%	235	68,821,335.91	35.23%
8.01% - 8.50%	228	62,534,479.10	31.59%	65	18,218,449.21	9.33%
8.51% - 9.00%	84	22,628,193.62	11.43%	76	21,586,754.11	11.05%
9.01% - 9.50%	61	17,825,425.39	9.00%	6	350,577.78	0.18%
9.51% - 10.00%	21	5,177,277.91	2.62%	1	302,005.36	0.15%
> 10%	2	345,896.40	0.17%	2	345,896.40	0.18%
	664	197,958,618.76	100.00%	655	195,355,711.21	100.00%

Number of Loans



Balance Outstanding

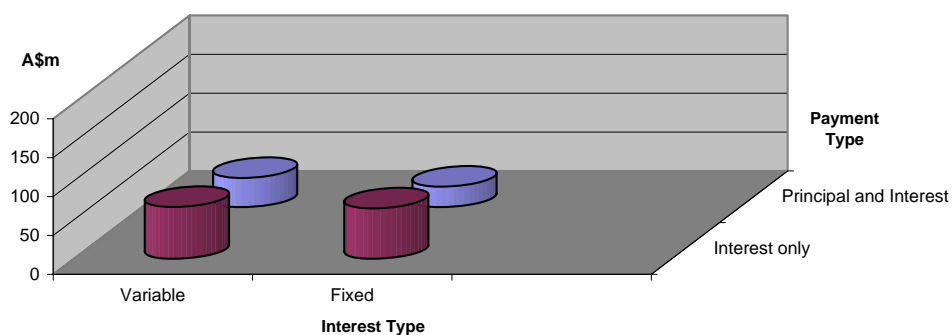


Distribution by Repayment Types:

Repayment Types	No. of Loans (LM)	Current Balance (LM)	% (LM)	No. of Loans	Current Balance	%
Principal and Interest	240	64,404,607.47	32.53%	237	63,880,114.92	32.70%
Interest only	424	133,554,011.29	67.47%	418	131,475,596.29	67.30%
	664	197,958,618.76	100.00%	655	195,355,711.21	100.00%

Distribution by Interest Types:

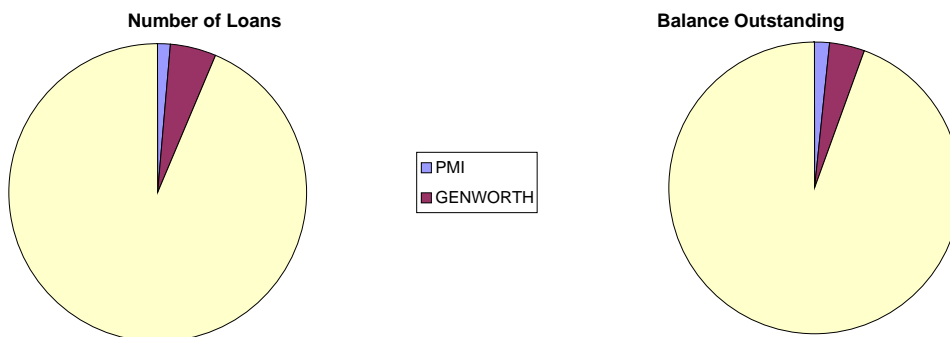
Repayment Types	No. of Loans (LM)	Current Balance (LM)	% (LM)	No. of Loans	Current Balance	%
Variable	388	106,286,521.77	53.69%	381	104,189,152.48	53.33%
Fixed	276	91,672,096.99	46.31%	274	91,166,558.73	46.67%
	664	197,958,618.76	100.00%	655	195,355,711.21	100.00%





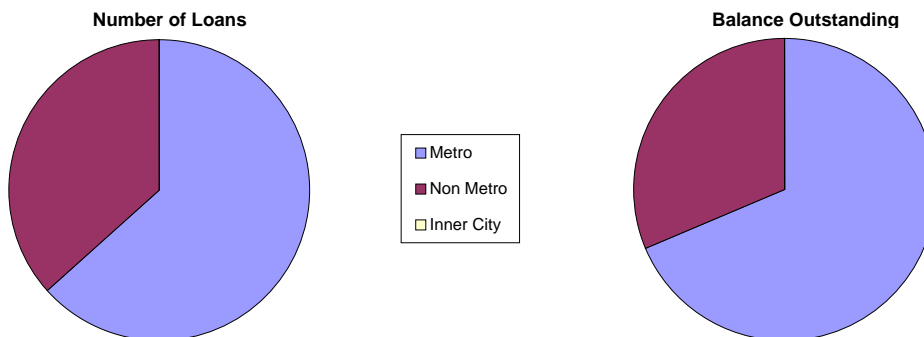
Distribution by Mortgage Insurer

Mortgage Insurer	No. of Loans (LM)	Current Balance (LM)	% (LM)	No. of Loans	Current Balance	%
PMI	10	3,138,911.64	1.59%	10	3,100,235.58	1.59%
GENWORTH	33	8,005,671.72	4.04%	32	7,758,937.83	3.97%
MGIC	621	186,814,035.40	94.37%	613	184,496,537.80	94.44%
	664	197,958,618.76	100.00%	655	195,355,711.21	100.00%



Distribution by Metro/Non-Metro

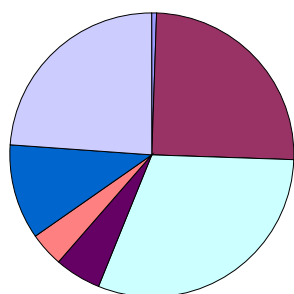
Original Occupancy Status	No. of securities (LM)	Current Balance (LM)	% (LM)	No. of securities	Current Balance	%
Metro	384	134,752,035.42	68.07%	384	134,181,067.33	68.69%
Non Metro	221	63,206,583.34	31.93%	221	61,174,643.88	31.31%
Inner City	-	-	0.00%	-	-	0.00%
	605	197,958,618.76	100.00%	605	195,355,711.21	100.00%



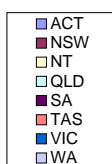
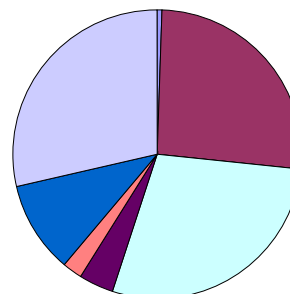
Distribution by Property Location

Property Location	No. of securities (LM)	Current Balance (LM)	% (LM)	No. of securities	Current Balance	%
ACT	4	1,209,413.16	0.61%	4	1,200,258.96	0.61%
NSW	150	51,622,669.18	26.08%	150	50,838,211.37	26.02%
NT	1	252,579.73	0.13%	1	252,139.48	0.13%
QLD	184	56,024,711.55	28.30%	184	55,406,582.73	28.36%
SA	33	7,497,926.55	3.79%	33	7,492,660.83	3.84%
TAS	23	4,009,132.20	2.03%	23	3,982,561.28	2.04%
VIC	66	20,101,725.27	10.15%	66	20,281,845.20	10.38%
WA	144	57,240,461.12	28.92%	144	55,901,451.35	28.62%
	605	197,958,618.76	100.00%	605	195,355,711.21	100.00%

Number of Loans



Balance Outstanding



Distribution of Arrears

Days in Arrears	No. of Loans (LM)	Current Balance (LM)	% (LM)	No. of Loans	Current Balance	%
0	633	188,048,775.55	94.99%	630	185,954,682.97	95.19%
1 - 30	23	7,134,579.57	3.60%	18	6,733,635.89	3.45%
31 - 60	4	1,055,402.46	0.53%	4	1,241,925.63	0.64%
61 - 90	4	1,719,861.18	0.87%	3	1,425,466.72	0.73%
>90	-	-	0.00%	-	-	0.00%
	664	197,958,618.76	100.00%	655	195,355,711.21	100.00%

Distribution by Product Type

Product Type	No. of Loans (LM)	Current Balance (LM)	% (LM)	No. of Loans	Current Balance	%
Full Documentation	96	28,598,823.80	14.45%	93	27,524,931.33	14.09%
Low Documentation	543	163,810,980.48	82.75%	538	162,540,748.64	83.20%
No Documentation	25	5,548,814.48	2.80%	24	5,290,031.24	2.71%
	664	197,958,618.76	100.00%	655	195,355,711.21	100.00%

Nautilus Trust No. 1 Series 2007-1

February 10, 2009

Monthly Waterfall Calculation Report

Collection Period (start)	January 01, 2009
Collection Period (end)	January 31, 2009
Payment Period (start)	January 12, 2009
Payment Period (end)	February 10, 2009
Actual number of days in the Payment Period	29
BBSW	4.3167 %

A. OUTSTANDING NOTE ANALYSIS

Class A Notes

Number of Outstanding Notes	20,400
Margin for the Notes	0.6900 %
Interest Rate for the Notes	5.0067 %
Interest Accrued (i.e. due on next Payment Date)	595,884.00
Interest to be paid on next Payment Date	595,884.00
Unpaid Interest Carry Forward	0.00
Opening Invested Amount	149,795,160.00
Opening Stated Amount	149,795,160.00
Principal Repayments to be made on next Payment Date	2,731,560.00
Charge Offs to be made on next Payment Date	0.00
Charge Offs to be reimbursed on next Payment Date	0.00
Carry over Charge Offs as of next Payment Date	0.00
Closing Invested Amount	147,063,600.00
Closing Stated Amount	147,063,600.00
Opening Principal Factor	0.73429000
Principal Paid Factor	0.01339000
Interest Paid Factor	0.00292100
Closing Principal Factor	0.72090000

B. Distribution of Principal Repayment Fund - Clause 1.12 of Supplementary Terms Notice

Amount available for Distribution	3,103,140.98
a) Principal Draw	371,556.15
b) Repayment of Further Advances and Redraws	0.00
c) Principal payment to Liquidity Noteholders	0.00
d) If Pro_Rata test is satisfied, pari passu payments towards reducing Class A, AB and B notes outstanding balance to zero	0.00
e) Principal payment to Class A Noteholders	2,731,560.00
f) Principal payment to Class AB Noteholders	0.00
g) Principal payment to Class B Noteholders	0.00
h) Principal payment to Class C Noteholders	0.00
i) Amount upto in aggregate to the subscription proceeds of the residual unit	0.00
j) (i) 50% of Surplus to Participation Unitholder A	0.00
j) (ii) 50% of Surplus to Participation Unitholder B	0.00