

INDEX	Page
Collateral Pool Information	2-9
Summary Data	2
Distribution by Original Loan Balance	3
Distribution by Original LVR	3
Distribution by Current Loan Balance	4
Distribution by Current LVR	4
Distribution by Seasoning	5
Distribution by Original Loan Term	5
Distribution by Remaining Term	6
Distribution by Interest Rate	7
Distribution by Repayment Types	7
Distribution by Interest Types	7
Distribution by Mortgage Insurer	8
Distribution by Metro/Non-Metro	8
Distribution by Property Location	9
Distribution of Arrears	9
Distribution by Original Occupancy Status	9
Note Information and Waterfall	10



Portfolio Data as of 30-Nov-09

SUMMARY DATA

Aggregate Principal Balance	142,032,343.05
Number of Loans	480

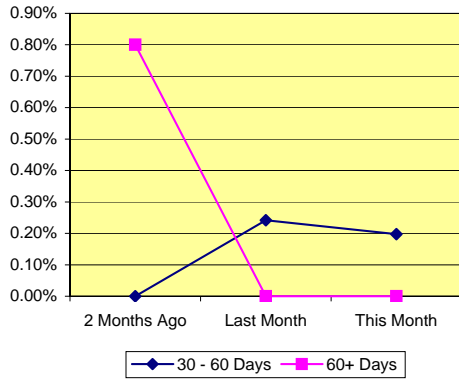
	Range	Average	Median
Principal Balance (A\$)	-0.41 - 1,009,355.19	295,900.71	263,957.66
Interest Rate	5.90% - 10.59%	7.51% *	
Remaining Term (Months)	318.94 - 334.52	325.22	324.46
Original Balance (A\$)	10,812.00 - 1,009,564.77	327,861.65	291,780.38
Original Term (Months)	360.00 - 360.00	360.00	360.00
Current LVR	0.00% - 99.68%	76.91% *	
Seasoning (Months)	25.48 - 41.06	34.78	35.54

* Weighted Average

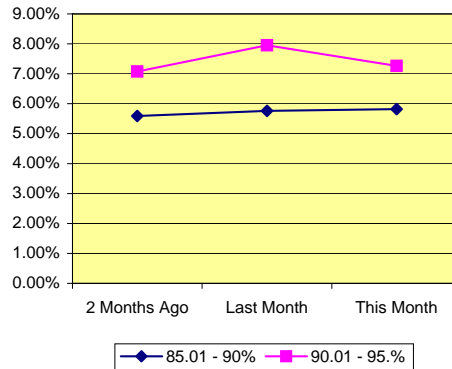
Delinquency Status	Balance (A\$)	Percentage of Pool		
	This Month	2 Months Ago	Last Month	This Month
30 - 60 Days	280,471.06	0.00%	0.24%	0.20%
60+ Days	-	0.80%	0.00%	0.00%

High LVR Loans	Balance (A\$)	Percentage of Pool		
	This Month	2 Months Ago	Last Month	This Month
Current LVR				
80.01 - 85%	35,156,295.12	28.31%	26.66%	24.75%
85.01 - 90%	8,269,067.85	5.59%	5.76%	5.82%
90.01 - 95.0%	10,312,956.83	7.07%	7.95%	7.26%
95.01%-100%	5,701,564.82	3.90%	3.49%	4.01%

% of Delinquent Loans



% of High LVR Loans

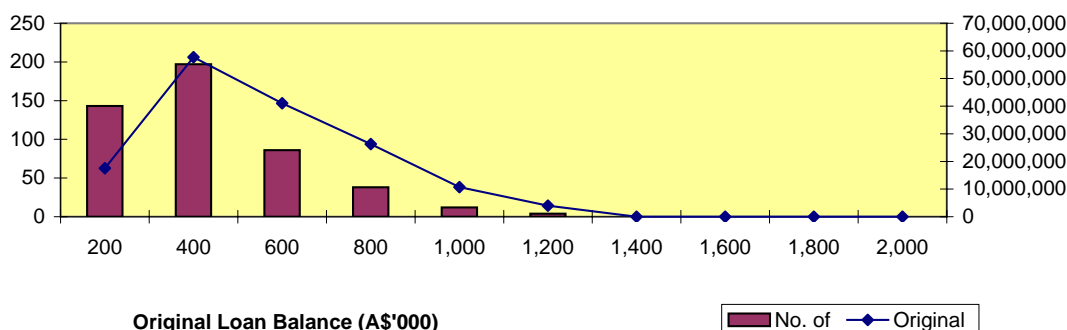




Distribution by Original Loan Balance

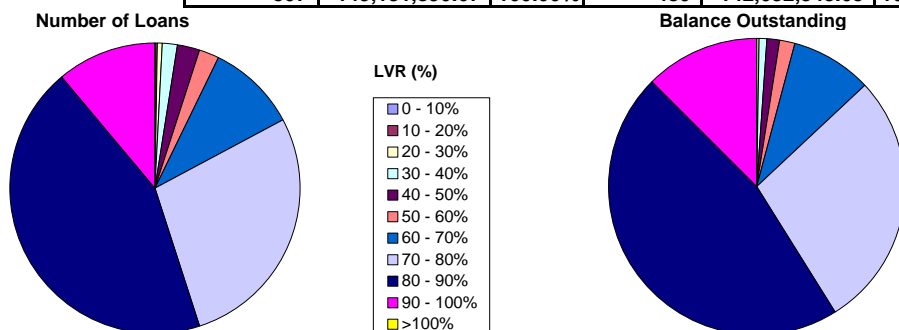
Loan Balance (A\$)	No. of Loans (LM*)	Original Balance (LM)	% (LM)	No. of Loans	Original Balance	%
0.01 - 200,000.00	152	18,106,547.74	10.95%	143	17,540,852.40	11.15%
200,000.01 - 400,000.00	209	61,462,411.09	37.18%	197	57,728,316.96	36.68%
400,000.01 - 600,000.00	89	42,529,241.58	25.73%	86	41,047,502.49	26.08%
600,000.01 - 800,000.00	41	28,476,088.88	17.22%	38	26,310,676.85	16.72%
800,000.01 - 1,000,000.00	12	10,729,585.21	6.49%	12	10,729,585.21	6.82%
1,000,000.01 - 1,200,000.00	4	4,016,659.77	2.43%	4	4,016,659.77	2.55%
1,200,000.01 - 1,400,000.00	-	-	0.00%	-	-	0.00%
1,400,000.01 - 1,600,000.00	-	-	0.00%	-	-	0.00%
1,600,000.01 - 1,800,000.00	-	-	0.00%	-	-	0.00%
1,800,000.01 - 2,000,000.00	-	-	0.00%	-	-	0.00%
	507	165,320,534.27	100.00%	480	157,373,593.68	100.00%

*Last Month



Distribution by Approval LVR

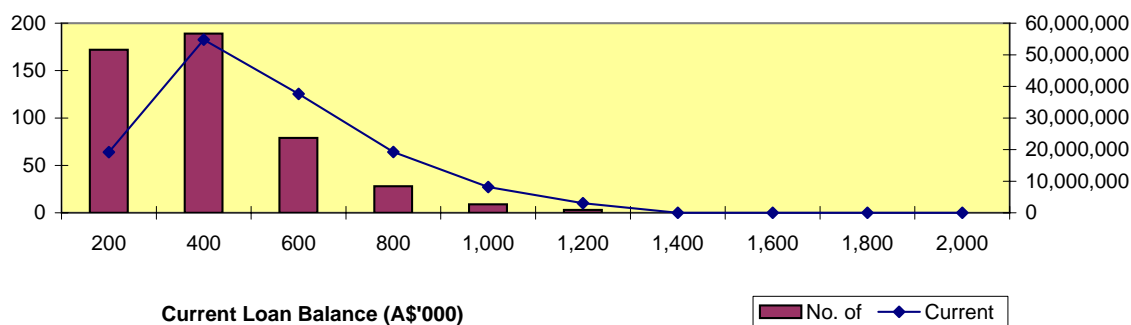
LVR Range:	No. of Loans (LM)	Current Balance (LM)	% (LM)	No. of Loans	Current Balance	%
0.01% - 10.00%	-	-	0.00%	-	-	0.00%
10.01% - 20.00%	1	105,609.51	0.07%	1	105,566.53	0.07%
20.01% - 30.00%	3	310,995.16	0.21%	3	309,115.84	0.22%
30.01% - 40.00%	8	1,358,830.08	0.91%	8	1,356,728.79	0.96%
40.01% - 50.00%	12	1,846,045.80	1.24%	12	1,842,972.61	1.30%
50.01% - 60.00%	11	2,422,924.09	1.62%	10	2,280,634.34	1.61%
60.01% - 70.00%	51	13,498,387.16	9.05%	48	12,551,773.21	8.84%
70.01% - 80.00%	147	42,851,023.60	28.73%	134	39,859,186.55	28.06%
80.01% - 90.00%	219	68,589,145.73	45.99%	210	65,991,973.83	46.46%
90.01% - 100.00%	55	18,148,929.54	12.17%	54	17,734,391.35	12.49%
> 100.00%	-	-	0.00%	-	-	0.00%
	507	149,131,890.67	100.00%	480	142,032,343.05	100.00%





Distribution by Current Loan Balance

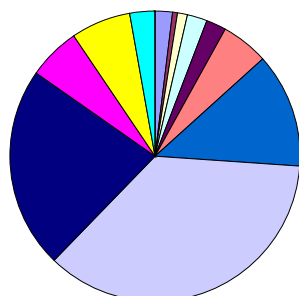
Loan Balance (A\$)	No. of Loans (LM)	Current Balance (LM)	% (LM)	No. of Loans	Current Balance	%
0.01 - 200,000.00	182	19,637,719.38	13.17%	172	19,189,148.16	13.51%
200,000.01 - 400,000.00	202	58,979,492.97	39.55%	189	54,799,894.11	38.58%
400,000.01 - 600,000.00	81	38,643,444.55	25.91%	79	37,628,222.55	26.49%
600,000.01 - 800,000.00	30	20,706,319.89	13.88%	28	19,246,859.83	13.55%
800,000.01 - 1,000,000.00	9	8,151,076.94	5.47%	9	8,155,306.22	5.74%
1,000,000.01 - 1,200,000.00	3	3,013,836.94	2.02%	3	3,012,912.18	2.12%
1,200,000.01 - 1,400,000.00	-	-	0.00%	-	-	0.00%
1,400,000.01 - 1,600,000.00	-	-	0.00%	-	-	0.00%
1,600,000.01 - 1,800,000.00	-	-	0.00%	-	-	0.00%
1,800,000.01 - 2,000,000.00	-	-	0.00%	-	-	0.00%
	507	149,131,890.67	100.00%	480	142,032,343.05	100.00%



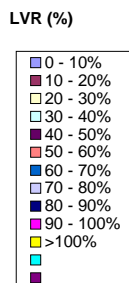
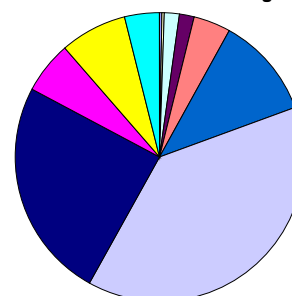
Distribution by Current LVR

LVR Range:	No. of Loans (LM)	Current Balance (LM)	% (LM)	No. of Loans	Current Balance	%
0.01% - 10.00%	9	226,230.12	0.15%	9	226,257.67	0.16%
10.01% - 20.00%	5	283,533.01	0.19%	3	230,087.16	0.16%
20.01% - 30.00%	5	506,238.29	0.34%	5	499,522.97	0.35%
30.01% - 40.00%	11	2,381,858.45	1.60%	11	2,372,940.01	1.67%
40.01% - 50.00%	14	2,947,108.03	1.98%	10	2,330,297.19	1.64%
50.01% - 60.00%	21	5,371,347.98	3.60%	26	5,758,473.62	4.05%
60.01% - 70.00%	69	17,760,895.14	11.91%	61	16,192,173.00	11.40%
70.01% - 80.00%	178	54,249,453.39	36.38%	174	54,982,706.81	38.71%
80.01% - 85.00%	117	39,755,217.89	26.66%	107	35,156,295.12	24.75%
85.01% - 90.00%	30	8,593,563.29	5.76%	29	8,269,067.85	5.82%
90.01% - 95.00%	36	11,857,134.61	7.95%	32	10,312,956.83	7.26%
95.01% - 100.00%	12	5,199,310.47	3.49%	13	5,701,564.82	4.01%
> 100.00%	-	-	0.00%	-	-	0.00%
	507	149,131,890.67	100.00%	480	142,032,343.05	100.00%

Number of Loans



Balance Outstanding



Distribution by Seasoning

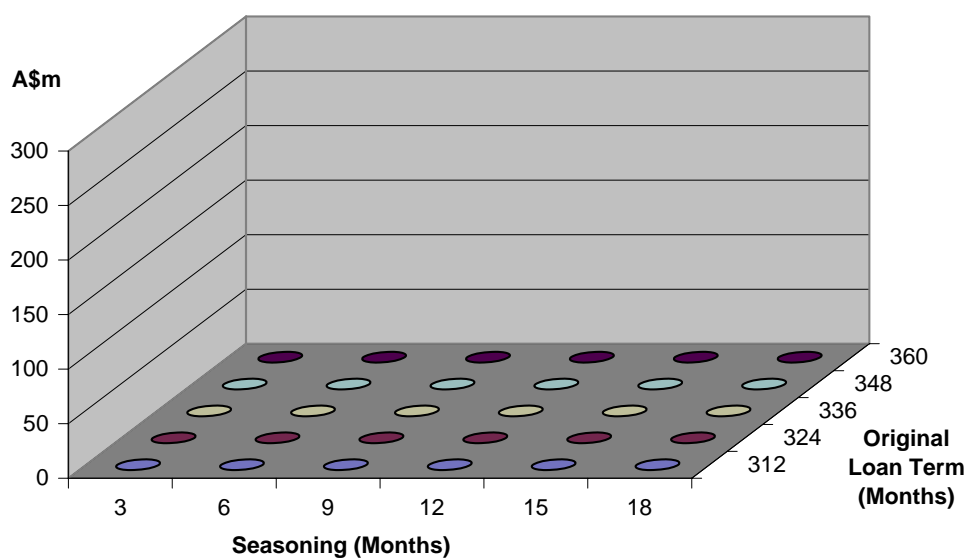
Seasoning (Months)	No. of Loans (LM)	Current Balance (LM)	% (LM)	No. of Loans	Current Balance	%
0 - 3	-	-	0.00%	-	-	0.00%
4 - 6	-	-	0.00%	-	-	0.00%
7 - 9	-	-	0.00%	-	-	0.00%
10 - 12	-	-	0.00%	-	-	0.00%
13 - 15	-	-	0.00%	-	-	0.00%
16 - 18	-	-	0.00%	-	-	0.00%
19 - 21	-	-	0.00%	-	-	0.00%
22 - 24	-	-	0.00%	-	-	0.00%
25 - 27	43	13,475,564.66	9.05%	27	8,323,703.24	6.17%
28 - 30	463	135,502,197.64	90.95%	425	126,613,383.15	93.83%
	506	148,977,762.30	100.00%	452	134,937,086.39	100.00%

Distribution by Original Loan Term

Original Loan Term (Months)	No. of Loans (LM)	Current Balance (LM)	% (LM)	No. of Loans	Current Balance	%
0 - 303	-	0.00	0.00%	-	0.00	0.00%
304 - 306	-	-	0.00%	-	-	0.00%
307 - 309	-	-	0.00%	-	-	0.00%
310 - 312	-	-	0.00%	-	-	0.00%
313 - 315	-	-	0.00%	-	-	0.00%
316 - 318	-	-	0.00%	-	-	0.00%
319 - 321	-	-	0.00%	-	-	0.00%
322 - 324	-	-	0.00%	-	-	0.00%
325 - 327	-	-	0.00%	-	-	0.00%
328 - 330	-	-	0.00%	-	-	0.00%
331 - 333	-	-	0.00%	-	-	0.00%
334 - 336	-	-	0.00%	-	-	0.00%
337 - 339	-	-	0.00%	-	-	0.00%
340 - 342	-	-	0.00%	-	-	0.00%
343 - 345	-	-	0.00%	-	-	0.00%
346 - 348	-	-	0.00%	-	-	0.00%
349 - 351	-	-	0.00%	-	-	0.00%
352 - 354	-	-	0.00%	-	-	0.00%
355 - 357	-	-	0.00%	-	-	0.00%
358 - 360	507	149,131,890.67	100.00%	480	142,032,343.05	100.00%
	507	149,131,890.67	100.00%	480	142,032,343.05	100.00%

Distribution by Remaining Term:

Remaining Term (Months)	No. of Loans (LM)	Current Balance (LM)	% (LM)	No. of Loans	Current Balance	%
0 - 303	-	-	0.00%	-	-	0.00%
304 - 306	-	-	0.00%	-	-	0.00%
307 - 309	-	-	0.00%	-	-	0.00%
310 - 312	-	-	0.00%	-	-	0.00%
313 - 315	-	-	0.00%	-	-	0.00%
316 - 318	-	-	0.00%	-	-	0.00%
319 - 321	28	7,183,264.54	4.82%	91	25,769,416.10	18.14%
322 - 324	171	48,968,013.68	32.84%	135	40,251,399.50	28.34%
325 - 327	108	33,379,439.38	22.38%	87	27,022,620.20	19.03%
328 - 330	101	29,483,258.89	19.77%	111	31,856,093.47	22.43%
331 - 333	56	16,642,349.52	11.16%	29	8,809,110.54	6.20%
334 - 336	43	13,475,564.66	9.04%	27	8,323,703.24	5.86%
337 - 339	-	-	0.00%	-	-	0.00%
340 - 342	-	-	0.00%	-	-	0.00%
343 - 345	-	-	0.00%	-	-	0.00%
346 - 348	-	-	0.00%	-	-	0.00%
349 - 351	-	-	0.00%	-	-	0.00%
352 - 354	-	-	0.00%	-	-	0.00%
355 - 357	-	-	0.00%	-	-	0.00%
358 - 360	-	-	0.00%	-	-	0.00%
507	149,131,890.67	100.00%	480	142,032,343.05	100.00%	

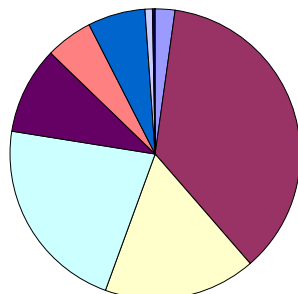




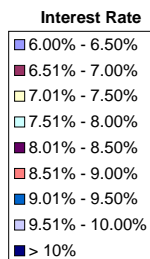
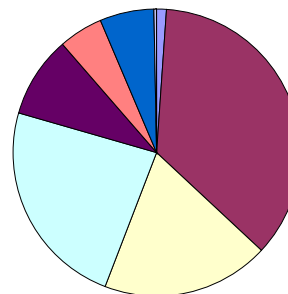
Distribution by Interest Rate

Interest Rate	No. of Loans (LM)	Current Balance (LM)	% (LM)	No. of Loans	Current Balance	%
6.00% - 6.50%	71	18,487,289.44	12.40%	10	1,581,344.64	1.11%
6.51% - 7.00%	137	38,945,015.69	26.11%	175	50,807,020.37	35.77%
7.01% - 7.50%	95	32,215,979.02	21.60%	82	26,918,819.66	18.95%
7.51% - 8.00%	124	37,151,193.82	24.91%	105	33,374,622.07	23.50%
8.01% - 8.50%	32	10,115,834.38	6.78%	46	13,140,427.22	9.25%
8.51% - 9.00%	41	11,566,255.77	7.76%	26	7,161,026.21	5.04%
9.01% - 9.50%	4	236,923.54	0.16%	31	8,479,825.76	5.97%
9.51% - 10.00%	1	300,305.92	0.20%	3	456,164.03	0.32%
> 10%	2	113,093.09	0.08%	2	113,093.09	0.08%
	507	149,131,890.67	100.00%	480	142,032,343.05	100.00%

Number of Loans



Balance Outstanding

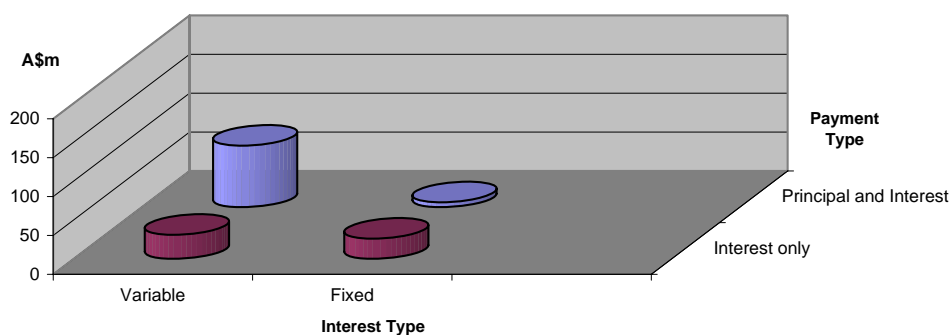


Distribution by Repayment Types:

Repayment Types	No. of Loans (LM)	Current Balance (LM)	% (LM)	No. of Loans	Current Balance	%
Principal and Interest	258	69,615,210.72	46.68%	298	85,372,858.21	60.11%
Interest only	249	79,516,679.95	53.32%	182	56,659,484.84	39.89%
	507	149,131,890.67	100.00%	480	142,032,343.05	100.00%

Distribution by Interest Types:

Repayment Types	No. of Loans (LM)	Current Balance (LM)	% (LM)	No. of Loans	Current Balance	%
Variable	353	98,883,515.28	66.31%	383	109,914,740.47	77.39%
Fixed	154	50,248,375.39	33.69%	97	32,117,602.58	22.61%
	507	149,131,890.67	100.00%	480	142,032,343.05	100.00%





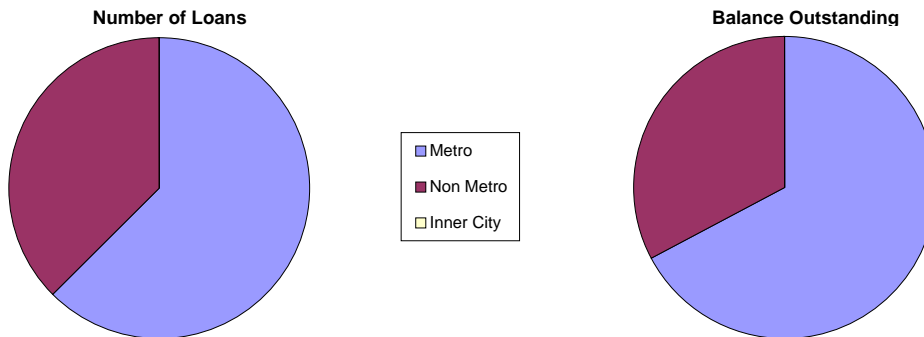
Distribution by Mortgage Insurer

Mortgage Insurer	No. of Loans (LM)	Current Balance (LM)	% (LM)	No. of Loans	Current Balance	%
PMI	6	2,143,875.43	1.44%	6	2,142,157.47	1.51%
GENWORTH	29	6,221,017.04	4.17%	29	6,265,142.60	4.41%
MGIC	472	140,766,998.20	94.39%	445	133,625,042.98	94.08%
	507	149,131,890.67	100.00%	480	142,032,343.05	100.00%



Distribution by Metro/Non-Metro

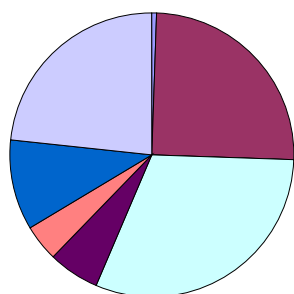
Original Occupancy Status	No. of securities (LM)	Current Balance (LM)	% (LM)	No. of securities	Current Balance	%
Metro	309	100,924,813.94	67.67%	297	95,461,068.17	67.21%
Non Metro	181	48,207,076.73	32.33%	178	46,571,274.88	32.79%
Inner City	-	-	0.00%	-	-	0.00%
	490	149,131,890.67	100.00%	475	142,032,343.05	100.00%



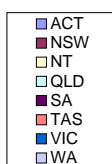
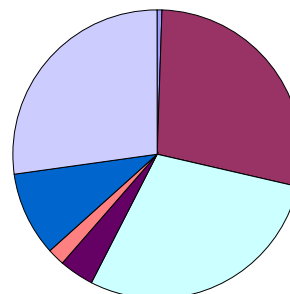
Distribution by Property Location

Property Location	No. of securities (LM)	Current Balance (LM)	% (LM)	No. of securities	Current Balance	%
ACT	3	896,944.18	0.60%	3	893,379.37	0.63%
NSW	123	42,141,009.53	28.26%	118	39,693,818.68	27.95%
NT	1	247,091.23	0.17%	1	246,545.84	0.17%
QLD	147	41,856,855.00	28.07%	146	40,974,157.05	28.85%
SA	28	5,977,886.24	4.01%	27	5,357,858.27	3.77%
TAS	20	2,752,999.93	1.85%	20	2,752,414.25	1.94%
VIC	53	14,243,775.02	9.55%	49	13,432,630.68	9.46%
WA	115	41,015,329.55	27.50%	111	38,681,538.92	27.23%
	490	149,131,890.67	100.00%	475	142,032,343.05	100.00%

Number of Loans



Balance Outstanding



Distribution of Arrears

Days in Arrears	No. of Loans (LM)	Current Balance (LM)	% (LM)	No. of Loans	Current Balance	%
0	498	146,131,883.00	97.99%	472	139,391,055.22	98.14%
1 - 30	8	2,639,392.67	1.77%	7	2,360,816.77	1.66%
31 - 60	1	360,615.00	0.24%	1	280,471.06	0.20%
61 - 90	-	-	0.00%	-	-	0.00%
>90	-	-	0.00%	-	-	0.00%
	507	149,131,890.67	100.00%	480	142,032,343.05	100.00%

Distribution by Product Type

Product Type	No. of Loans (LM)	Current Balance (LM)	% (LM)	No. of Loans	Current Balance	%
Full Documentation	80	23,342,204.51	15.65%	80	23,357,296.48	16.45%
Low Documentation	408	122,047,192.34	81.84%	382	115,254,497.61	81.15%
No Documentation	19	3,742,493.82	2.51%	18	3,420,548.96	2.41%
	507	149,131,890.67	100.00%	480	142,032,343.05	100.00%

Nautilus Trust No. 1 Series 2007-1

December 10, 2009

Monthly Waterfall Calculation Report

Collection Period (start)	November 01, 2009
Collection Period (end)	November 30, 2009
Payment Period (start)	November 10, 2009
Payment Period (end)	December 10, 2009
Actual number of days in the Payment Period	30
BBSW	3.6700 %

A. OUTSTANDING NOTE ANALYSIS

Class A Notes

Number of Outstanding Notes	20,400
Margin for the Notes	0.6900 %
Interest Rate for the Notes	4.3600 %
Interest Accrued (i.e. due on next Payment Date)	362,712.00
Interest to be paid on next Payment Date	362,712.00
Unpaid Interest Carry Forward	0.00
Opening Invested Amount	101,201,828.72
Opening Stated Amount	101,201,828.72
Principal Repayments to be made on next Payment Date	5,723,212.22
Charge Offs to be made on next Payment Date	0.00
Charge Offs to be reimbursed on next Payment Date	0.00
Carry over Charge Offs as of next Payment Date	0.00
Closing Invested Amount	95,478,616.50
Closing Stated Amount	95,478,616.50
Opening Principal Factor	0.49608740
Principal Paid Factor	0.02805496
Interest Paid Factor	0.00177800
Closing Principal Factor	0.46803243

B. Distribution of Principal Repayment Fund - Clause 1.12 of Supplementary Terms Notice

Amount available for Distribution	7,122,009.87
a) Principal Draw	292,355.33
b) Repayment of Further Advances and Redraws	0.00
c) Principal payment to Liquidity Noteholders	0.00
d) If Pro_Rata test is satisfied, pari passu payments towards reducing Class A, AB and B notes outstanding balance to zero	3,414,827.27
d) (i) Class A	2,308,456.22
d) (i) Class AB	865,566.12
d) (i) Class B	240,804.93
e) Principal payment to Class A Noteholders	3,414,756.00
f) Principal payment to Class AB Noteholders	0.00
g) Principal payment to Class B Noteholders	0.00
h) Principal payment to Class C Noteholders	0.00

Nautilus Trust No. 1 Series 2007-1**December 10, 2009**

i) Amount upto in aggregate to the subscription proceeds of the residual unit	0.00
j) (i) 50% of Surplus to Participation Unitholder A	0.00
j) (ii) 50% of Surplus to Participation Unitholder B	0.00