

**INDEX**

Page

Collateral Pool Information**2-9**

Summary Data	2
Distribution by Original Loan Balance	3
Distribution by Original LVR	3
Distribution by Current Loan Balance	4
Distribution by Current LVR	4
Distribution by Seasoning	5
Distribution by Original Loan Term	5
Distribution by Remaining Term	6
Distribution by Interest Rate	7
Distribution by Repayment Types	7
Distribution by Interest Types	7
Distribution by Mortgage Insurer	8
Distribution by Metro/Non-Metro	8
Distribution by Property Location	9
Distribution of Arrears	9
Distribution by Original Occupancy Status	9

Note Information and Waterfall**10**



Portfolio Data as of **30-Apr-10**

SUMMARY DATA

Aggregate Principal Balance	119,892,021.24
Number of Loans	409

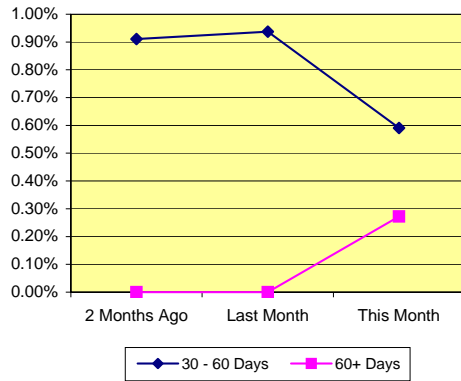
	Range	Average	Median
Principal Balance (A\$)	6.11 - 1,009,355.19	293,134.53	259,096.95
Interest Rate	0.25% - 10.59%	8.18% *	
Remaining Term (Months)	313.97 - 329.56	320.43	319.69
Original Balance (A\$)	10,812.00 - 1,009,564.77	329,959.48	289,026.56
Original Term (Months)	360.00 - 360.00	360.00	360.00
Current LVR	0.00% - 99.64%	76.77% *	
Seasoning (Months)	30.44 - 46.03	39.57	40.31

* Weighted Average

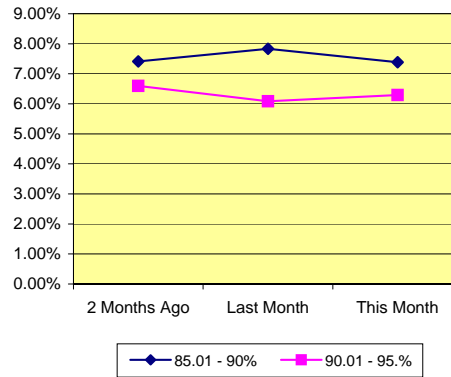
Delinquency Status	Balance (A\$)	Percentage of Pool		
	This Month	2 Months Ago	Last Month	This Month
30 - 60 Days	708,323.60	0.91%	0.94%	0.59%
60+ Days	326,320.76	0.00%	0.00%	0.27%

High LVR Loans	Balance (A\$)	Percentage of Pool		
	This Month	2 Months Ago	Last Month	This Month
Current LVR				
80.01 - 85%	21,322,640.73	19.79%	17.35%	17.78%
85.01 - 90%	8,856,607.71	7.41%	7.83%	7.39%
90.01 - 95.0%	7,544,652.49	6.60%	6.09%	6.29%
95.01%-100%	6,041,049.27	4.44%	5.23%	5.04%

% of Delinquent Loans



% of High LVR Loans

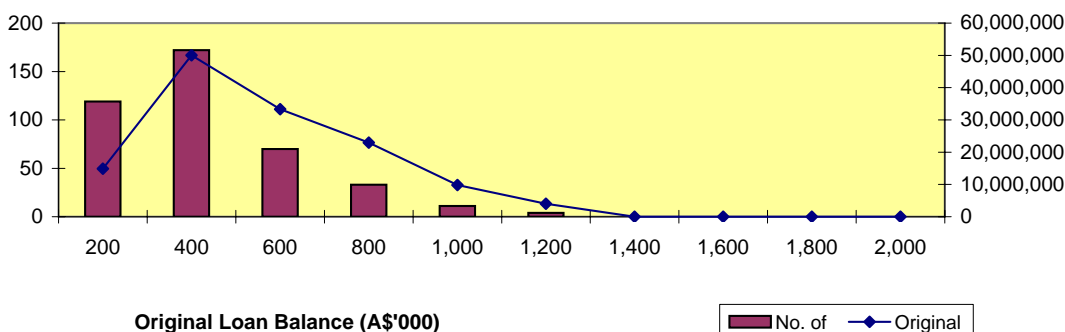




Distribution by Original Loan Balance

Loan Balance (A\$)	No. of Loans (LM*)	Original Balance (LM)	% (LM)	No. of Loans	Original Balance	%
0.01 - 200,000.00	122	15,041,519.02	10.82%	119	14,861,547.02	11.01%
200,000.01 - 400,000.00	177	51,607,541.55	37.13%	172	50,011,058.87	37.06%
400,000.01 - 600,000.00	75	35,556,431.10	25.58%	70	33,304,293.11	24.68%
600,000.01 - 800,000.00	33	22,950,283.86	16.51%	33	22,950,283.86	17.01%
800,000.01 - 1,000,000.00	11	9,809,585.21	7.06%	11	9,809,585.21	7.27%
1,000,000.01 - 1,200,000.00	4	4,016,659.77	2.89%	4	4,016,659.77	2.98%
1,200,000.01 - 1,400,000.00	-	-	0.00%	-	-	0.00%
1,400,000.01 - 1,600,000.00	-	-	0.00%	-	-	0.00%
1,600,000.01 - 1,800,000.00	-	-	0.00%	-	-	0.00%
1,800,000.01 - 2,000,000.00	-	-	0.00%	-	-	0.00%
	422	138,982,020.51	100.00%	409	134,953,427.84	100.00%

*Last Month

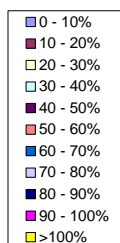
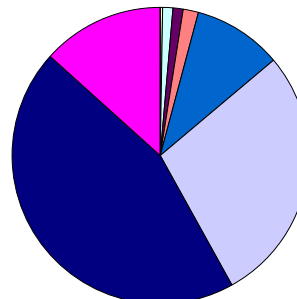
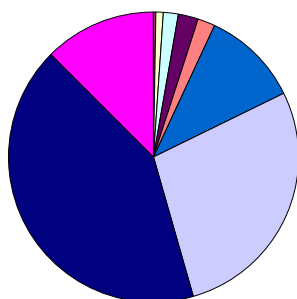


Distribution by Approval LVR

LVR Range:	No. of Loans (LM)	Current Balance (LM)	% (LM)	No. of Loans	Current Balance	%
0.01% - 10.00%	-	-	0.00%	-	-	0.00%
10.01% - 20.00%	1	106,409.78	0.09%	1	106,376.27	0.09%
20.01% - 30.00%	3	307,278.33	0.25%	3	306,972.35	0.26%
30.01% - 40.00%	7	1,121,406.75	0.91%	7	1,118,988.68	0.93%
40.01% - 50.00%	9	1,535,223.32	1.24%	9	1,484,286.65	1.24%
50.01% - 60.00%	9	2,076,301.30	1.68%	8	1,857,883.16	1.55%
60.01% - 70.00%	46	12,211,188.67	9.86%	45	11,786,369.22	9.83%
70.01% - 80.00%	116	34,582,292.79	27.92%	113	33,627,635.72	28.05%
80.01% - 90.00%	179	55,410,213.47	44.73%	172	53,516,053.64	44.64%
90.01% - 100.00%	52	16,525,535.86	13.34%	51	16,087,455.55	13.42%
> 100.00%	-	-	0.00%	-	-	0.00%
	422	123,875,850.27	100.00%	409	119,892,021.24	100.00%

Number of Loans

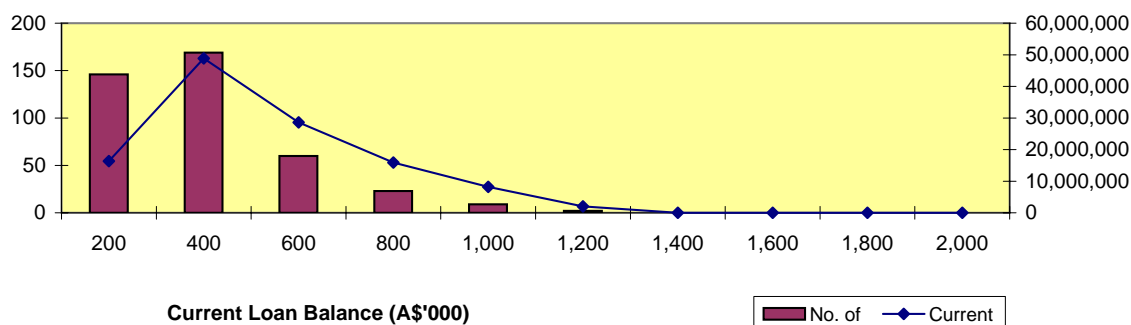
Balance Outstanding





Distribution by Current Loan Balance

Loan Balance (A\$)	No. of Loans (LM)	Current Balance (LM)	% (LM)	No. of Loans	Current Balance	%
0.01 - 200,000.00	149	16,681,444.57	13.47%	146	16,354,129.14	13.64%
200,000.01 - 400,000.00	174	50,311,738.18	40.61%	169	48,839,153.94	40.74%
400,000.01 - 600,000.00	65	30,804,954.88	24.87%	60	28,597,495.41	23.85%
600,000.01 - 800,000.00	23	15,856,721.56	12.80%	23	15,882,712.67	13.25%
800,000.01 - 1,000,000.00	9	8,210,145.84	6.63%	9	8,207,684.84	6.85%
1,000,000.01 - 1,200,000.00	2	2,010,845.24	1.62%	2	2,010,845.24	1.68%
1,200,000.01 - 1,400,000.00	-	-	0.00%	-	-	0.00%
1,400,000.01 - 1,600,000.00	-	-	0.00%	-	-	0.00%
1,600,000.01 - 1,800,000.00	-	-	0.00%	-	-	0.00%
1,800,000.01 - 2,000,000.00	-	-	0.00%	-	-	0.00%
	422	123,875,850.27	100.00%	409	119,892,021.24	100.00%

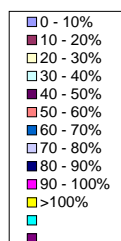
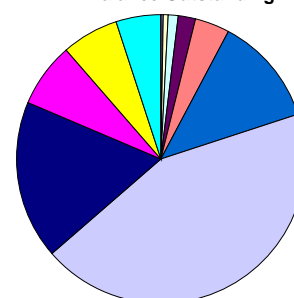
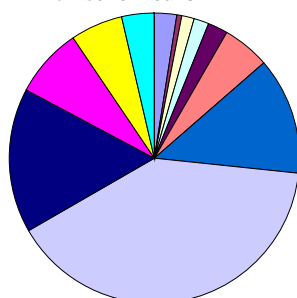


Distribution by Current LVR

LVR Range:	No. of Loans (LM)	Current Balance (LM)	% (LM)	No. of Loans	Current Balance	%
0.01% - 10.00%	10	292,258.95	0.24%	10	291,264.35	0.24%
10.01% - 20.00%	3	196,223.39	0.16%	3	196,189.88	0.16%
20.01% - 30.00%	4	380,351.66	0.31%	5	481,790.12	0.40%
30.01% - 40.00%	8	1,322,125.00	1.07%	7	1,447,929.25	1.21%
40.01% - 50.00%	10	2,683,738.56	2.17%	9	2,114,325.20	1.76%
50.01% - 60.00%	25	5,724,513.85	4.62%	22	4,849,365.67	4.04%
60.01% - 70.00%	51	13,949,093.85	11.26%	53	14,432,140.12	12.04%
70.01% - 80.00%	169	54,107,371.18	43.68%	164	52,314,066.45	43.63%
80.01% - 85.00%	66	21,494,657.02	17.35%	66	21,322,640.73	17.78%
85.01% - 90.00%	36	9,705,193.75	7.83%	31	8,856,607.71	7.39%
90.01% - 95.00%	24	7,540,922.55	6.09%	24	7,544,652.49	6.29%
95.01% - 100.00%	16	6,479,400.51	5.23%	15	6,041,049.27	5.04%
> 100.00%	-	-	0.00%	-	-	0.00%
	422	123,875,850.27	100.00%	409	119,892,021.24	100.00%

Number of Loans

Balance Outstanding



Distribution by Seasoning

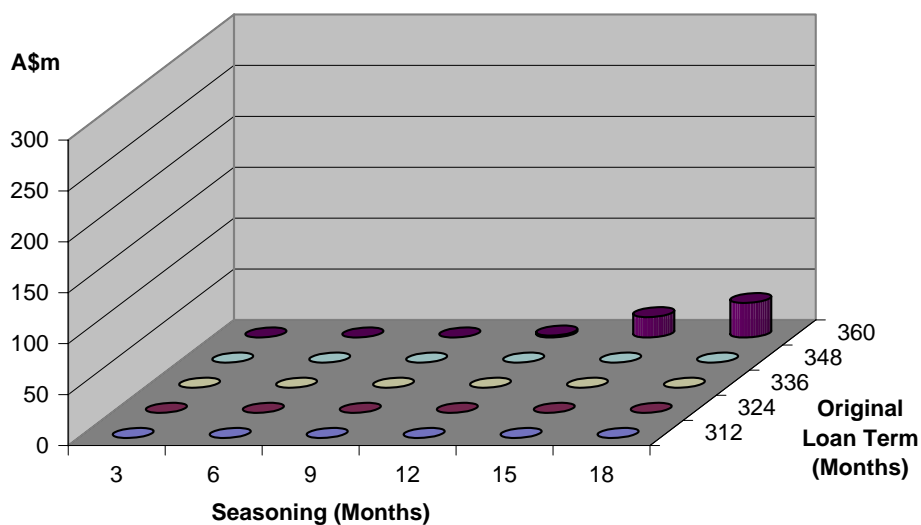
Seasoning (Months)	No. of Loans (LM)	Current Balance (LM)	% (LM)	No. of Loans	Current Balance	%
0 - 5	-	-	0.00%	-	-	0.00%
6 - 10	-	-	0.00%	-	-	0.00%
11 - 15	-	-	0.00%	-	-	0.00%
16 - 20	-	-	0.00%	-	-	0.00%
21 - 25	-	-	0.00%	-	-	0.00%
26 - 30	2	744,685.77	0.60%	-	-	0.00%
31 - 35	90	27,956,418.96	22.57%	53	16,350,526.37	13.64%
36 - 40	144	42,029,808.82	33.93%	150	44,544,131.72	37.15%
41 - 45	185	52,992,646.02	42.78%	179	52,174,550.02	43.52%
46 - 50	1	152,290.70	0.12%	27	6,822,813.13	5.69%
	422	123,875,850.27	100.00%	409	119,892,021.24	100.00%

Distribution by Original Loan Term

Original Loan Term (Months)	No. of Loans (LM)	Current Balance (LM)	% (LM)	No. of Loans	Current Balance	%
0 - 303	-	0.00	0.00%	-	0.00	0.00%
304 - 306	-	-	0.00%	-	-	0.00%
307 - 309	-	-	0.00%	-	-	0.00%
310 - 312	-	-	0.00%	-	-	0.00%
313 - 315	-	-	0.00%	-	-	0.00%
316 - 318	-	-	0.00%	-	-	0.00%
319 - 321	-	-	0.00%	-	-	0.00%
322 - 324	-	-	0.00%	-	-	0.00%
325 - 327	-	-	0.00%	-	-	0.00%
328 - 330	-	-	0.00%	-	-	0.00%
331 - 333	-	-	0.00%	-	-	0.00%
334 - 336	-	-	0.00%	-	-	0.00%
337 - 339	-	-	0.00%	-	-	0.00%
340 - 342	-	-	0.00%	-	-	0.00%
343 - 345	-	-	0.00%	-	-	0.00%
346 - 348	-	-	0.00%	-	-	0.00%
349 - 351	-	-	0.00%	-	-	0.00%
352 - 354	-	-	0.00%	-	-	0.00%
355 - 357	-	-	0.00%	-	-	0.00%
358 - 360	422	123,875,850.27	100.00%	409	119,892,021.24	100.00%
	422	123,875,850.27	100.00%	409	119,892,021.24	100.00%

Distribution by Remaining Term:

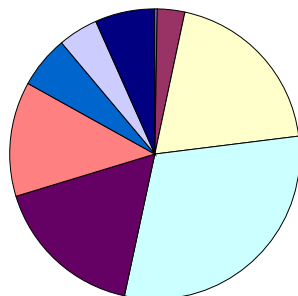
Remaining Term (Months)	No. of Loans (LM)	Current Balance (LM)	% (LM)	No. of Loans	Current Balance	%
0 - 303	-	-	0.00%	-	-	0.00%
304 - 306	-	-	0.00%	-	-	0.00%
307 - 309	-	-	0.00%	-	-	0.00%
310 - 312	-	-	0.00%	-	-	0.00%
313 - 315	1	152,290.70	0.12%	27	6,822,813.13	5.69%
316 - 318	116	32,962,068.78	26.61%	121	35,534,317.22	29.64%
319 - 321	97	28,502,054.45	23.01%	75	21,848,076.88	18.22%
322 - 324	93	26,656,769.29	21.52%	95	27,587,052.12	23.01%
325 - 327	66	19,723,215.95	15.92%	52	15,622,424.91	13.03%
328 - 330	47	15,134,765.33	12.22%	39	12,477,336.98	10.41%
331 - 333	2	744,685.77	0.60%	-	-	0.00%
334 - 336	-	-	0.00%	-	-	0.00%
337 - 339	-	-	0.00%	-	-	0.00%
340 - 342	-	-	0.00%	-	-	0.00%
343 - 345	-	-	0.00%	-	-	0.00%
346 - 348	-	-	0.00%	-	-	0.00%
349 - 351	-	-	0.00%	-	-	0.00%
352 - 354	-	-	0.00%	-	-	0.00%
355 - 357	-	-	0.00%	-	-	0.00%
358 - 360	-	-	0.00%	-	-	0.00%
422	123,875,850.27	100.00%	409	119,892,021.24	100.00%	



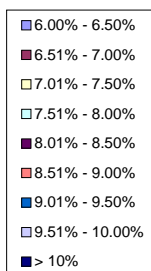
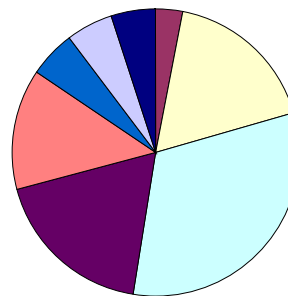
Distribution by Interest Rate

Interest Rate	No. of Loans (LM)	Current Balance (LM)	% (LM)	No. of Loans	Current Balance	%
6.00% - 6.50%	4	434,236.32	0.35%	1	37,267.69	0.03%
6.51% - 7.00%	12	3,296,264.49	2.66%	13	3,690,363.22	3.08%
7.01% - 7.50%	95	26,379,613.42	21.30%	80	20,897,242.78	17.43%
7.51% - 8.00%	153	48,638,722.91	39.26%	124	38,447,648.48	32.07%
8.01% - 8.50%	55	16,864,525.93	13.61%	69	21,871,748.81	18.24%
8.51% - 9.00%	46	13,162,239.31	10.63%	53	16,160,845.25	13.48%
9.01% - 9.50%	22	6,620,412.98	5.34%	24	6,508,978.70	5.43%
9.51% - 10.00%	31	8,208,335.90	6.63%	18	6,289,880.66	5.25%
> 10%	4	271,499.01	0.22%	27	5,988,045.65	4.99%
	422	123,875,850.27	100.00%	409	119,892,021.24	100.00%

Number of Loans



Balance Outstanding

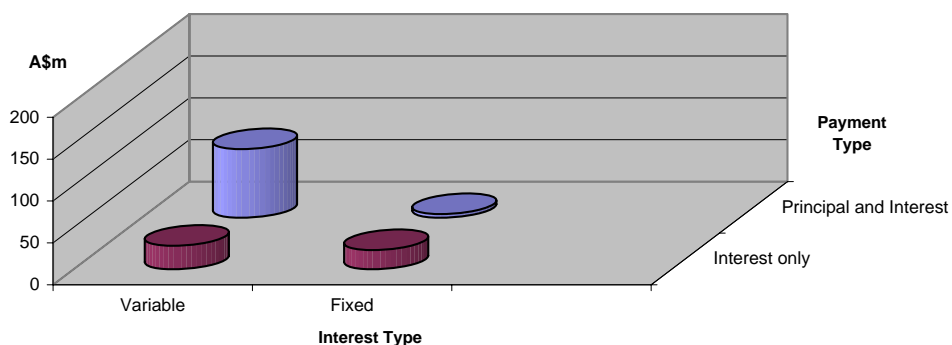


Distribution by Repayment Types:

Repayment Types	No. of Loans (LM)	Current Balance (LM)	% (LM)	No. of Loans	Current Balance	%
Principal and Interest	310	89,798,461.93	72.49%	310	89,693,528.60	74.81%
Interest only	112	34,077,388.34	27.51%	99	30,198,492.64	25.19%
	422	123,875,850.27	100.00%	409	119,892,021.24	100.00%

Distribution by Interest Types:

Repayment Types	No. of Loans (LM)	Current Balance (LM)	% (LM)	No. of Loans	Current Balance	%
Variable	375	107,663,766.06	86.91%	371	106,941,104.27	89.20%
Fixed	47	16,212,084.21	13.09%	38	12,950,916.97	10.80%
	422	123,875,850.27	100.00%	409	119,892,021.24	100.00%





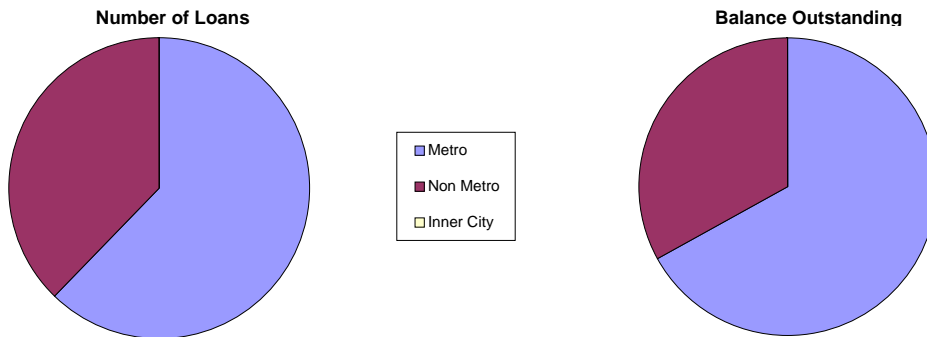
Distribution by Mortgage Insurer

Mortgage Insurer	No. of Loans (LM)	Current Balance (LM)	% (LM)	No. of Loans	Current Balance	%
PMI	5	1,836,866.37	1.48%	5	1,836,868.43	1.53%
GENWORTH	27	5,928,195.90	4.79%	27	5,919,712.86	4.94%
MGIC	390	116,110,788.00	93.73%	377	112,135,439.95	93.53%
	422	123,875,850.27	100.00%	409	119,892,021.24	100.00%



Distribution by Metro/Non-Metro

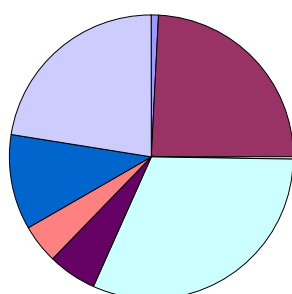
Original Occupancy Status	No. of securities (LM)	Current Balance (LM)	% (LM)	No. of securities	Current Balance	%
Metro	268	82,870,372.29	66.90%	262	80,333,428.11	67.00%
Non Metro	164	41,005,477.98	33.10%	159	39,558,593.13	33.00%
Inner City	-	-	0.00%	-	-	0.00%
	432	123,875,850.27	100.00%	421	119,892,021.24	100.00%



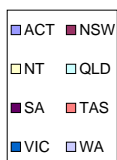
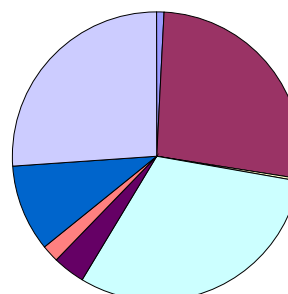
Distribution by Property Location

Property Location	No. of securities (LM)	Current Balance (LM)	% (LM)	No. of securities	Current Balance	%
ACT	3	884,146.44	0.71%	3	885,463.85	0.74%
NSW	104	33,343,244.90	26.92%	102	32,080,481.14	26.76%
NT	1	244,367.49	0.20%	1	245,356.16	0.20%
QLD	135	37,802,444.32	30.52%	132	37,005,359.36	30.87%
SA	25	4,708,707.60	3.80%	24	4,223,775.11	3.52%
TAS	19	2,418,507.95	1.95%	19	2,417,761.49	2.02%
VIC	47	12,343,088.39	9.96%	45	11,781,071.73	9.83%
WA	98	32,131,343.19	25.94%	95	31,252,752.40	26.07%
	432	123,875,850.27	100.00%	421	119,892,021.24	100.00%

Number of Loans



Balance Outstanding



Distribution of Arrears

Days in Arrears	No. of Loans (LM)	Current Balance (LM)	% (LM)	No. of Loans	Current Balance	%
0	413	120,727,383.32	97.46%	398	115,538,008.56	96.37%
1 - 30	6	1,987,285.93	1.60%	8	3,319,368.32	2.77%
31 - 60	3	1,161,181.02	0.94%	2	708,323.60	0.59%
61 - 90	-	-	0.00%	1	326,320.76	0.27%
>90	-	-	0.00%	-	-	0.00%
	422	123,875,850.27	100.00%	409	119,892,021.24	100.00%

Distribution by Product Type

Product Type	No. of Loans (LM)	Current Balance (LM)	% (LM)	No. of Loans	Current Balance	%
Full Documentation	71	20,573,559.50	16.61%	68	19,560,456.41	16.32%
Low Documentation	335	100,275,238.69	80.95%	325	97,310,808.84	81.17%
No Documentation	16	3,027,052.08	2.44%	16	3,020,755.99	2.52%
	422	123,875,850.27	100.00%	409	119,892,021.24	100.00%

Nautilus Trust No. 1 Series 2007-1

May 10, 2010

Monthly Waterfall Calculation Report

Collection Period (start)	April	01, 2010
Collection Period (end)	April	30, 2010
Payment Period (start)	April	12, 2010
Payment Period (end)	May	10, 2010
Actual number of days in the Payment Period		28
BBSW		4.3400 %

A. OUTSTANDING NOTE ANALYSIS

Class A Notes

Number of Outstanding Notes		20,400
Margin for the Notes		0.6900 %
Interest Rate for the Notes		5.0300 %
Interest Accrued (i.e. due on next Payment Date)		309,060.00
Interest to be paid on next Payment Date		309,060.00
Unpaid Interest Carry Forward		0.00
Opening Invested Amount		80,073,050.68
Opening Stated Amount		80,073,050.68
Principal Repayments to be made on next Payment Date		3,325,203.73
Charge Offs to be made on next Payment Date		0.00
Charge Offs to be reimbursed on next Payment Date		0.00
Carry over Charge Offs as of next Payment Date		0.00
Closing Invested Amount		76,747,846.95
Closing Stated Amount		76,747,846.95
Opening Principal Factor		0.39251495
Principal Paid Factor		0.01630002
Interest Paid Factor		0.00151500
Closing Principal Factor		0.37621494

B. Distribution of Principal Repayment Fund - Clause 1.12 of Supplementary Terms Notice

Amount available for Distribution		4,313,592.50
a) Principal Draw		268,642.59
b) Repayment of Further Advances and Redraws		0.00
c) Principal payment to Liquidity Noteholders		0.00
d) If Pro_Rata test is satisfied, pari passu payments towards reducing Class A, AB and B notes outstanding balance to zero		2,022,474.95
d) (i) Class A		1,302,747.73
d) (i) Class AB		563,076.46
d) (i) Class B		156,650.76
e) Principal payment to Class A Noteholders		2,022,456.00
f) Principal payment to Class AB Noteholders		0.00
g) Principal payment to Class B Noteholders		0.00
h) Principal payment to Class C Noteholders		0.00

Nautilus Trust No. 1 Series 2007-1**May 10, 2010**

i) Amount upto in aggregate to the subscription proceeds of the residual unit	0.00
j) (i) 50% of Surplus to Participation Unitholder A	0.00
j) (ii) 50% of Surplus to Participation Unitholder B	0.00